

The California College Guidance Initiative

CSU San Bernardino Regional Convening

April 14, 2025



CALIFORNIA
COLLEGES .edu



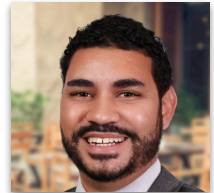
The State of California's Official
College and Career Planning Platform



qr.codes/hY3GI6



Heather Allen
Chief Programs Officer



Julian McDaniels
Director
Inland Empire, Imperial, &
San Diego Counties



Today's Essential Questions

1

How can you leverage the tools on CaliforniaColleges.edu within your current college and career readiness systems?

2

What additional systems would you like to develop to support student use of CaliforniaColleges.edu?

3

What preparatory work needs to be done by your district and site team to implement CaliforniaColleges.edu?





CALIFORNIA
COLLEGES.edu
DISCOVER. PLAN. LAUNCH.

California College Guidance Initiative

Who We Are

- ▶ **Manager of CaliforniaColleges.edu**, the State of California's official college and career planning platform
- ▶ A **legislatively-authorized** service provider to all California school districts ([California Education Code 60900.5](#))
- ▶ A crucial component of **California's Cradle-to-Career Data System**, as established by AB 132

Who We Are Not

- ▶ A vendor
- ▶ A grant-funded program





CALIFORNIA
COLLEGES.edu
DISCOVER. PLAN. LAUNCH.

What We Do

CaliforniaColleges.edu is free to all public school districts that serve 6th-12th grade students in California.

- ▶ **We provide college and career planning tools** to students and educators through CaliforniaColleges.edu.
- ▶ **We connect California systems**, including integrations with all three public higher education systems (**CCC, CSU, UC**) and the California Student Aid Commission (**CSAC**).
- ▶ **We partner with school districts** to bring high school students' transcript data to CaliforniaColleges.edu.





CALIFORNIA
COLLEGES.edu
DISCOVER. PLAN. LAUNCH.

Our Role in the Cradle-to-Career Data System

CaliforniaColleges.edu is a crucial component of the C2C Data System.

In 2021, the enactment of AB 132 outlined specific steps in order to implement the Cradle-to-Career (C2C) Data System and realize its objectives, including:

- ▶ Making CaliforniaColleges.edu tools and services **free** to all California school districts serving 6-12th grade students, with a goal of full participation by 2026.
- ▶ Designating CaliforniaColleges.edu as the **preferred starting point** for all applications to California public colleges (CCC, CSU, UC), FAFSA, and CADAA.

[Visit the Cradle-to-Career Website](#)



"It's on us to make it easy for students to navigate education and job choices.

The Cradle-to-Career system provides the data and support infrastructure that will make it possible for every California student to thrive."

— Governor Gavin Newsom

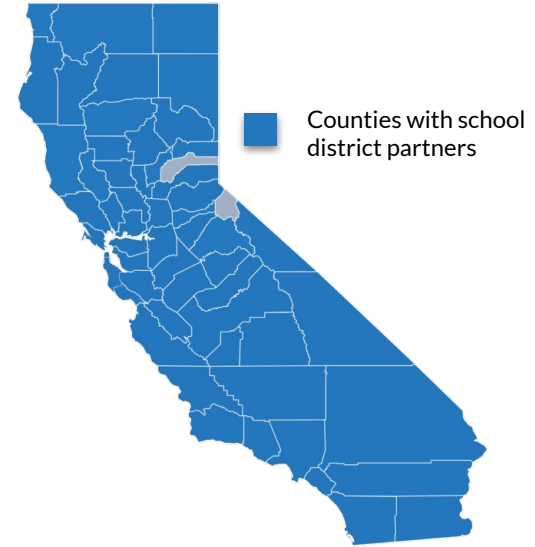




CCGI Partner Districts

More than 75% of California's high school students are enrolled in a school district that has already partnered with CCGI.

- ▶ Our Partner Districts include more than **397 school districts** that enroll nearly **1.5 million** of California's **9th-12th grade students**.
- ▶ California Education Code 60900(f)(3) now requires that all LEAs that enroll 9-12 grade students enter into a data sharing agreement with CCGI by **January 2026**.



▼ See who our Partner Districts are ▼

<http://californiacolleges.edu/learnmore/partner-districts/>



Year of Partnership with CCGI

▶ Riverside County

▶ San Bernardino County

2013-2014

- ▶ Desert Sands Unified School District

2015-2016

- ▶ Chaffey Joint Union High School District
- ▶ Corona-Norco Unified School District
- ▶ Murrieta Valley Unified School District
- ▶ Val Verde Unified School District

2016-2017

- ▶ Chino Valley Unified School District
- ▶ Hemet Unified School District
- ▶ Moreno Valley Unified School District
- ▶ Perris Union High School District
- ▶ Temecula Valley Unified School District

2017-2018

- ▶ Jurupa Unified School District

2019-2020

- ▶ Coachella Valley Unified School District
- ▶ Lake Elsinore Unified School District

2020-2021

- ▶ Alvord Unified School District
- ▶ Apple Valley Unified School District
- ▶ Barstow Unified School District
- ▶ Beaumont Unified School District
- ▶ Fontana Unified School District
- ▶ Hesperia Unified School District
- ▶ Palm Springs Unified School District
- ▶ Riverside County Office of Education
- ▶ Redlands unified School District
- ▶ San Bernardino City Unified School District
- ▶ Snowline Joint Unified School District
- ▶ Victor Valley Union High School District
- ▶ Yucaipa-Calimesa Joint Unified School District

2021-2022

- ▶ Banning Unified School District
- ▶ Riverside Unified School District
- ▶ San Jacinto Unified School District

2022-2023

- ▶ Morongo Unified School District
- ▶ Nuview Union School District
- ▶ Rim of the World Unified School District
- ▶ Upland Unified School District

2023-2024

- ▶ Colton Joint Unified School District
- ▶ San Bernardino County Office of Education

2024-2025

- ▶ Rialto Unified School District

Not Current Partners

- ▶ Baker Valley Unified School District
- ▶ Bear Valley Unified School District
- ▶ California School for the Deaf
- ▶ Lucerne Valley Unified School District
- ▶ Needles Unified School District
- ▶ Trona Joint Unified School District
- ▶ Palo Verde Unified School District

College Application Integrations



CALIFORNIA
COLLEGES *.edu*

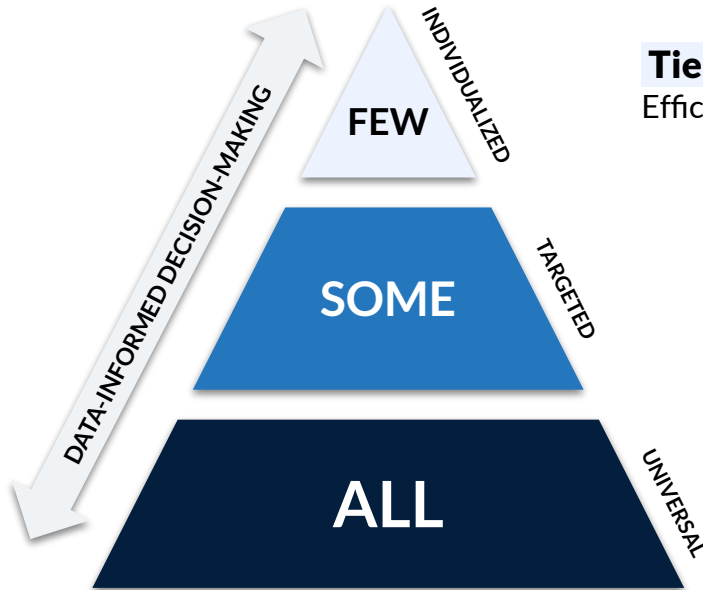


The Official College & Career Planning
Platform of the State of California



Within a MTSS Framework

CaliforniaColleges.edu can be leveraged to support Tier 1 learning for all students, while increasing efficiency and ability for educators to strategically intervene with those who need support at Tier 2 and 3.



Tier 3 – Intensive Interventions

Efficiencies at Tier 1 and 2, free time for educators to provide 1:1 support.

Tier 2 – Targeted Interventions

Educator tools and reports on CaliforniaColleges.edu allow for targeted interventions with individuals or groups of students.

Tier 1 – Universal Interventions

CaliforniaColleges.edu is the state's official college and career planning platform, designed for all 6th-12th grade students.

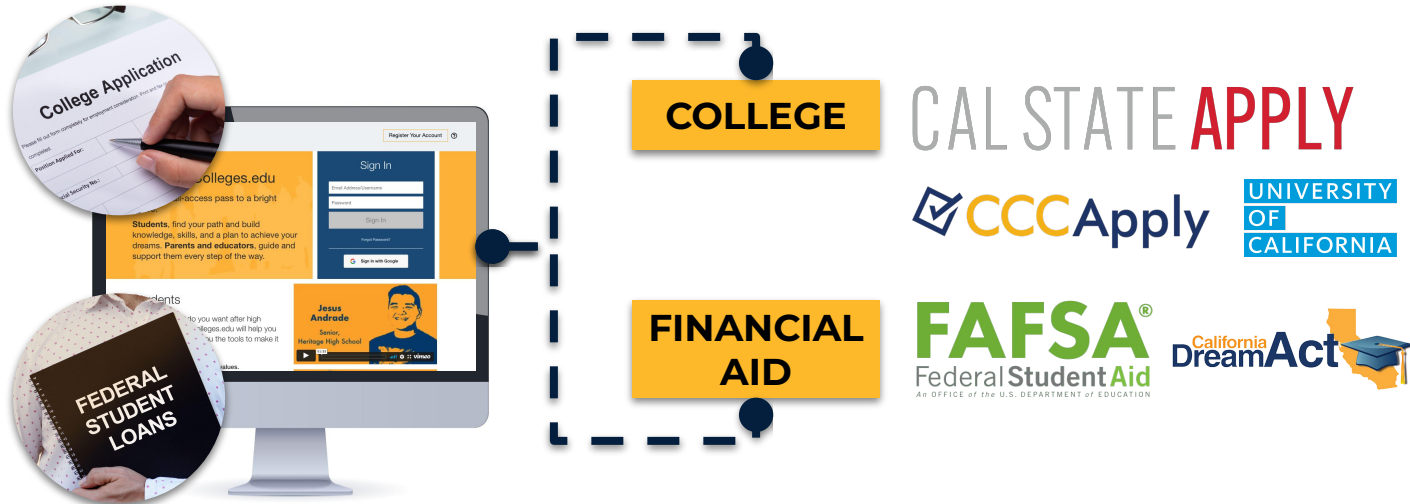


CALIFORNIA
COLLEGES.edu
DISCOVER. PLAN. LAUNCH.

Unique Tools for California

CaliforniaColleges.edu provides tools to help students and districts meet California-specific requirements.

We have integrations with all three of California's public higher education systems (CCC, CSU, UC) and the California Student Aid Commission (CSAC).





California Community Colleges

Students in Partner Districts see a list of the 5 CCCs closest to their school, with easy links to learn more about each campus and transfer options.

Academic Planner

CCCs

CSU Eligibility

UC Eligibility

CSU Application Info

UC Application Info



There are lots of great reasons to attend a California Community College (CCC). A CCC may be the best fit for you if:

- You need an **associate degree or certificate** for the career you want.
- You want to **start your career sooner**. Associate degree programs usually take two years. Certificate programs take even less time.
- You want to **prepare to transfer** to a four-year college.
- You want to **spend less money** on college tuition. CCCs have the lowest fees in the nation.
- You want to **stay close to home**. With 115 campuses across California, there is probably a CCC close to you.
- You need **flexible classes** in the evening, on weekends, or online so you can fit college into your life.
- You want to **get a head start on earning college credit** while you're still in high school.



Requirements

To attend a CCC, all you have to do is fill out an application and pay any required fees. You don't have to complete A-G requirements or take any special classes.

Learn more about the [Benefits of California Community Colleges](#).

Transfer Options

You can start at a CCC and transfer to a CSU, UC, or independent college after two years. Complete one of the programs below at your CCC to secure your spot.

- The [Associate Degree for Transfer \(ADT\)](#) guarantees you a spot at a CSU or an independent college.
- The [Transfer Admission Guarantee \(TAG\)](#) program guarantees you a spot at one of six UCs.

Five Closest CCCs to Your School

| | |
|---|-------------|
| Palomar College | 1.81 miles |
| MiraCosta College | 7.02 miles |
| San Diego Miramar College | 16.01 miles |
| San Diego Mesa College | 22.65 miles |
| Grossmont College | 24.63 miles |

[View All CCCs](#)

How to Apply

Nearly all CCCs use CCCApply for online applications. When you're ready, learn how to [launch CCCApply from your CaliforniaColleges.edu account](#).

[Launch CCCApply Now](#)



CALIFORNIA
COLLEGES.edu
DISCOVER. PLAN. LAUNCH.

CSU and UC Eligibility Tools for Students

Students in Partner Districts can use CSU and UC Eligibility Tools to continuously progress monitor their GPA and A-G eligibility.

The screenshot displays the 'Academic Planner' interface on the California Colleges.edu website. At the top, there's a navigation bar with the logo and links for 'Educator Dashboard', 'College', 'Career', and 'Financial Aid'. Below this, a section titled 'Academic Plan: CCC Demo' explains its purpose. A horizontal menu includes 'Academic Planner' (selected), 'My College Plan', 'My Career Plan', 'My Financial Aid Plan', 'My Goals', 'My Journal', 'My Experiences', and 'My Documents'. A paragraph explains that CSU eligibility is determined by graduation, 'a-g' course completion, and test scores. Below this, a secondary menu shows 'Academic Planner', 'California Community Colleges', 'CSU Eligibility' (selected), 'UC Eligibility', and 'CSU Application Info', with a 'Back to Academic Planner' button. The main content area is split into two panels. The left panel, 'CSU GPA', shows a green circle with '3.35' and text stating the user meets the minimum 2.0 requirement, with 'a-g' coursework completed in 10th, 11th, and 12th grades. The right panel, 'Your "a-g" Progress for CSU', shows a red target icon and text indicating the user is missing 1 year of 'a-g' courses and needs to complete recommended courses in specific subject areas (B, D, E, F).

CSU GPA

3.35

You are currently meeting the minimum GPA requirement of 2.0 or above. Your CSU GPA reflects "a-g" coursework submitted by your school district completed in 10th, 11th, and 12th grades, including the summers following 9th, 10th, and 11th grades.

Courses that have UC Honors Approved under the title

Your "a-g" Progress for CSU

Based upon successful completion of coursework this term, for your grade level, you are missing the following number of years of "a-g" courses: 1

You appear to not be making progress toward completing courses recommended for your grade level in the following subject areas: B, D, E, F

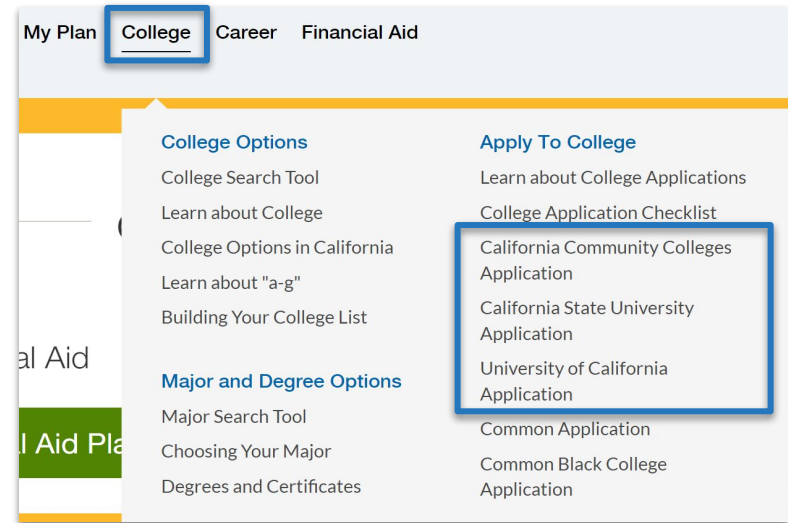


Launching Applications

Students can launch applications to California's financial aid and public higher education systems –

- ▶ **116 California Community Colleges**
- ▶ **23 California State University campuses**
- ▶ **9 University of California campuses**
- ▶ **FAFSA or CADAA**

...all in one place.

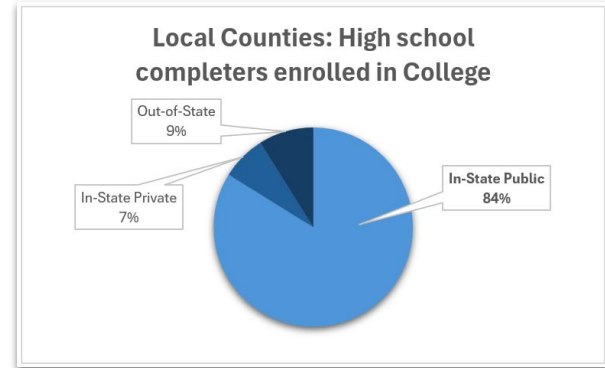




Why It Matters

Most California high school students will attend a California public higher education institution:

According the most recent [DataQuest College-Going Rate report](#), 84% of high school completers from local counties who enrolled in college did so at a UC, CSU or CCC.



Report Totals

| Name | High School Completers | High School Completers Enrolled in College | Enrolled In-State | | | | Enrolled Out-Of-State | |
|-------------------------------|------------------------|--|--------------------------|-----------------------------|------------------------------|--------------------------------|---------------------------------|---------------------------------|
| | | | University of California | California State University | California Community College | Private 2- and 4- Year College | 4-Year College (Public/Private) | 2-Year College (Public/Private) |
| Riverside | 31,986 | 18,242 | 2,337 | 2,706 | 10,134 | 1,275 | 1,536 | 254 |
| San Bernadino | 29,813 | 16,065 | 1,709 | 2,991 | 8,885 | 1,208 | 1,079 | 193 |

Filters Enabled:

College Enrollment Timeframe: 16 Months



CALIFORNIA
COLLEGES.edu
DISCOVER. PLAN. LAUNCH.

Why Launch from CaliforniaColleges.edu?



CAL STATE APPLY



Start from a Trusted Source:

Minimize students' guesswork and exposure to unofficial websites



Connect Data:

SSID linking helps facilitate identity matching between systems to smooth the process for students



Stay Informed:

Track the status of student applications and submissions



Save Time and Minimize A-G Errors:

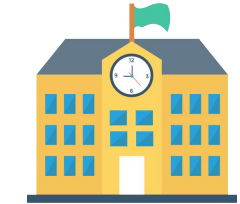
Import transcript courses and grades directly into students' applications



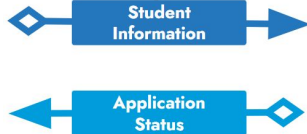


CALIFORNIA
COLLEGES.edu
DISCOVER. PLAN. LAUNCH.

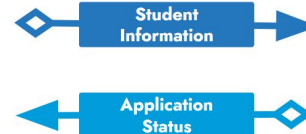
Connecting California's Systems



Partner District



Student launches applications
from CaliforniaColleges.edu



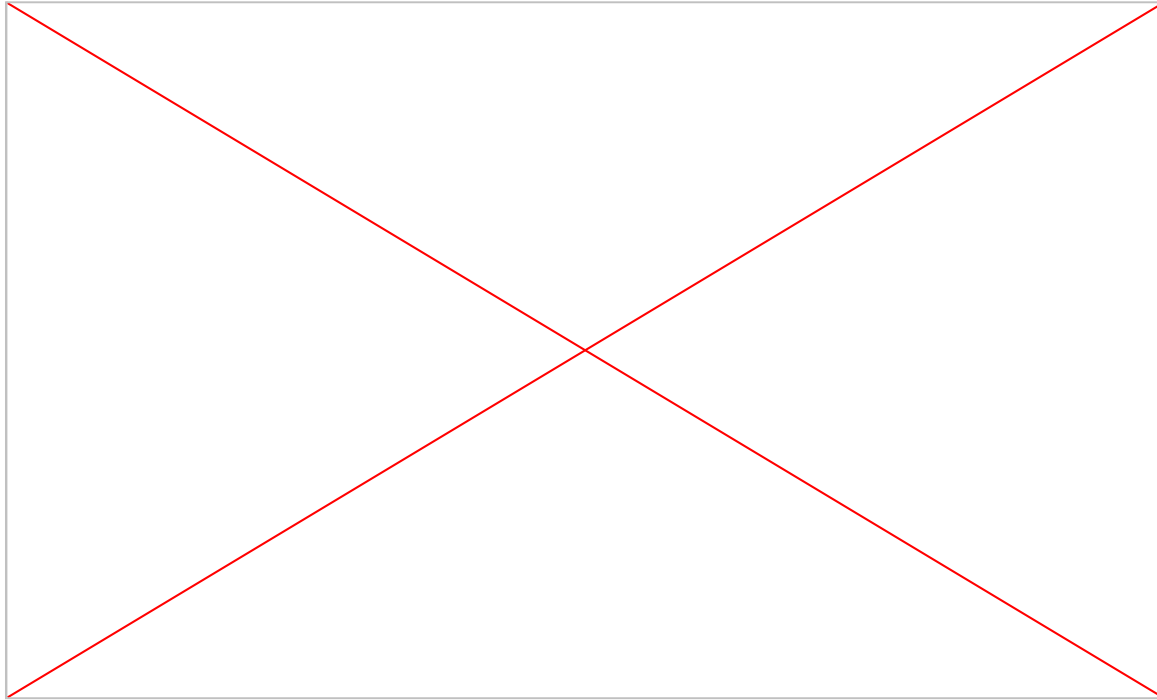
- California State University
- California Community College
- University of California





CALIFORNIA
COLLEGES.edu
DISCOVER. PLAN. LAUNCH.

The Financial Aid Tools



vimeo.com/997820877



Data-Informed Decision Making

View application submission statuses for all applications connected to CaliforniaColleges.edu – to all CCC, CSU and/or UC campuses and Financial Aid – updated nightly

- ▶ The “Download Only: College eligibility and application statuses” report offers a single, downloadable file to help you identify students for intervention and/or opportunities:

Select Report: Applications Download Only: Current College Eligibility and Application Statuses Have a report question? [Contact Us](#)

Select Filters: 12 Run Report

- ▶ Filter this report in multiple ways to answer questions, such as:
 - Which students are a-g eligible, but have not applied?
 - Which students have applications in progress, but not yet submitted?
 - Which students have not applied to any segment?
 - Which students have applied to a specific campus?



All-in-one Application Report

Download Only: Current
College Eligibility and
Application Statuses (CSV)

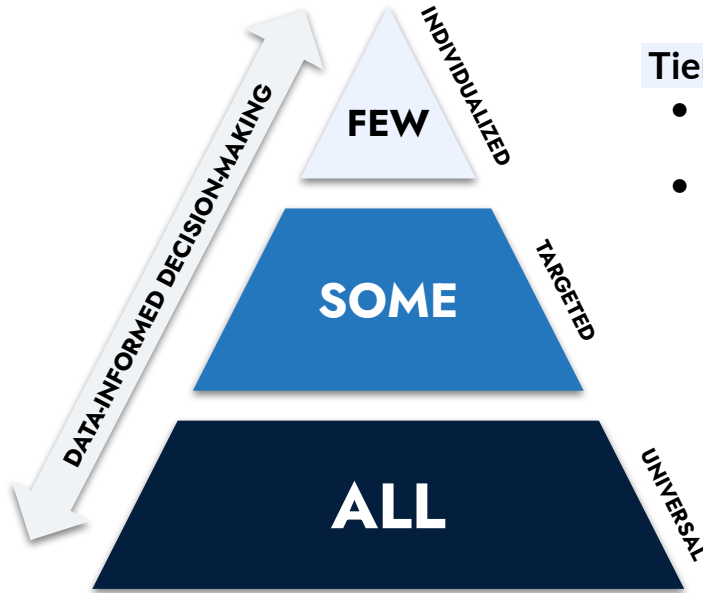
- ▶ By student
- ▶ CSU and UC Eligibility
- ▶ Status of CCC, CSU,
and UC Applications
- ▶ Status of Financial Aid
Applications

| Formatted Eligibility Report io | | | | | |
|---------------------------------|---------|---|---|---|--------------------|
| Student Name | CSU GPA | CSU Eligibility (CMP) | Completed CSU Applications | In-progress CSU Applications | FAFSA/CADAA Status |
| Demo 1 | 4 | On Target | California State University-Fresno; California State University-Long Beach; San Jose State University; California State University-San Marcos | California Polytechnic State University-San Luis Obispo; California State University-Bakersfield; California State University-Stanislaus; California State University-San Bernardino; California State Polytechnic University-Pomona; California State University-Chico; California State University-Dominguez Hills; California State University-Fresno; California State University-Fullerton | Launched |
| Demo 2 | 3.86 | On Target | California State University-Fullerton; California State University-Long Beach; California State University-Northridge; San Diego State University; California State University-Monterey Bay | California State University-Northridge; California State University-Sacramento; California State University-Maritime Academy; California State University-San Marcos | Launched |
| Demo 3 | 2.5 | Off Target deficient subjects | | Bakersfield; California State Polytechnic University-Humboldt | Launched |
| Demo 4 | 3.92 | Off Target deficient subjects | | California State University-Bakersfield | Launched |
| Demo 5 | 4.04 | On Target | | California State University-Bakersfield | Launched |
| Demo 6 | 4.05 | On Target | | | Launched |
| Demo 7 | 4.09 | On Target | | California State University-Bakersfield; California State University-Stanislaus; California State University-Chico; California State University-Fresno | Launched |
| Demo 8 | 4.13 | Off Target deficient years and subjects | | | Launched |
| Demo 9 | 4.04 | On Target | | | Launched |
| Demo 10 | 4.04 | On Target | | | Launched |
| Demo 11 | 4.18 | Off Target deficient subjects | | | Launched |
| Demo 12 | 4.04 | On Target | | California State University-Fresno | Launched |
| Demo 13 | 4.04 | Off Target deficient subjects | | | Launched |
| Demo 14 | 4.13 | On Target | | | Launched |
| Demo 15 | 4.05 | Off Target deficient subjects | | Bakersfield; California State University-Bakersfield | Launched |



Within a MTSS Framework

CaliforniaColleges.edu reporting tools can be leveraged to ensure all eligible students have been supported with making an informed college application decision.



Tier 3 – One-on-One Conversations

- Counselors call in every eligible student who has not submitted their application
- Verify that every CSU/UC eligible student has applied or been advised

Tier 2 – Make-up Days

- Repeat Tier 1 Process with all eligible students who have still not launched
- Send targeted invitations to workshops for those students who have not yet submitted their applications

Tier 1 – College Application Day

- Send passes for all CSU/UC eligible students to attend
- Walk students through log-in and application launch
- Support students with Course Import and A-G Matching



Table Talk Discussion

1

How are you currently using CaliforniaColleges.edu to support student application submission?

2

What would you like to do differently next year to ensure all eligible seniors launch and submit their applications?

3

What preparation can be done now to ensure a successful systemic approach to next year's application season?



Transcript-Informed Accounts on CaliforniaColleges.edu



CALIFORNIA
COLLEGES *.edu*



The Official College & Career Planning
Platform of the State of California



Partnership With CCGI

Partner Districts have a formal data-sharing agreement (MOU) with CCGI in order to bring their high school transcript data to CaliforniaColleges.edu.

Unique features for Partner Districts include:

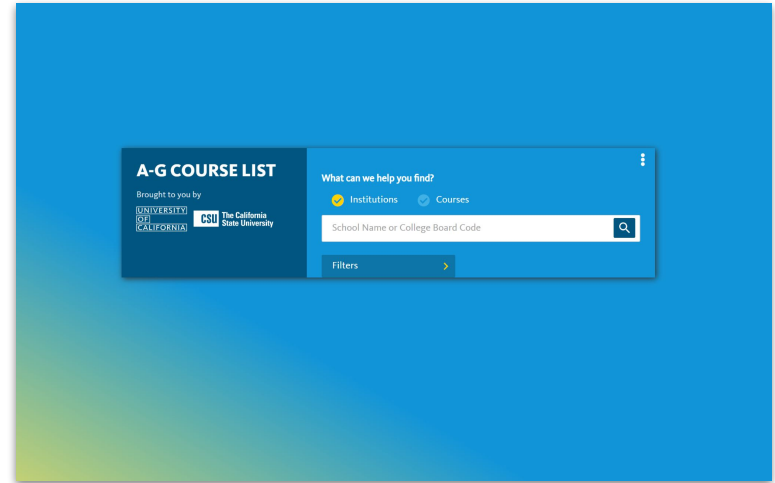
- ▶ **A-G Alignment Support** for districts to ensure that students get correct A-G credit for high school courses and grades in their college applications.
- ▶ **CSU and UC Eligibility Tools** that allow students to see their progress towards meeting the minimum requirements for admission to a CSU and UC.
- ▶ The ability to **import verified transcript data** to their Cal State Apply application and UC Application (beginning Fall 2024).



The Course Management Portal

The Course Management Portal (CMP) is where all California districts and/or their schools manage their public-facing “A-G Course List.”

- ▶ Every school that serves high school students in California needs to submit courses to the CMP for review and approval by UC, if that course is to appear on the school’s A-G Course List.
- ▶ The CMP course list is what determines which courses fulfill an A-G subject area for the purpose of CSU and UC admissions processes.





What is A-G Misalignment?

A-G mismatch occurs when the way a course is listed in a district's Student Information System (SIS) doesn't align with the way it is listed in the CMP.



CAL STATE APPLY
UNIVERSITY
OF
CALIFORNIA



What A-G Misalignment Looks Like

CMP Misalignment inhibits successful electronic data transmission and may prevent CSU and UC campuses from recognizing A-G approved coursework.



| In SIS | In CMP |
|--|---|
| Transcript Abbreviation: Wrld Hist Local Course Code: 30125 | Transcript Abbreviation: World History Local Course Code: [None Listed] |
| Transcript Abbreviations: Algebra 2A and Algebra 2B Local Course Codes: 1004S1 and 1004S2 | Transcript Abbreviation: Algebra II Local Course Code: 1004 |
| Transcript Abbreviation: English II Local Course Code: 4538ENGL | Transcript Abbreviation: English II/4538ENGL Local Course Code: [None Listed] |



A-G Alignment Support

CCGI provides technical assistance help LEAs ensure that courses indicated as fulfilling A-G requirements match the Course Management Portal

- ▶ California Education Code 60900(g) requires that LEAs maintain at least a 90% rate of alignment between A-G coursework, as listed in the local SIS, and how those courses are registered in the UC Course Management Portal A-G course list.
- ▶ CCGI has a dedicated Technical Assistance team to support districts in improving their CMP match rate.
- ▶ CaliforniaColleges.edu reporting features help educators identify and resolve issues with their CMP list that may impact eligibility for students:
 - Academic Report: **Which district courses are flagged as “A-G” but do not match against the CMP?**

Verifying Courses Against the CMP

CaliforniaColleges.edu matches the course grade records provided by school districts against the school's A-G list in the Course Management Portal (CMP).

- ▶ CaliforniaColleges.edu uses the official CMP course list for each school to **verify the transcript data** shared by districts.
- ▶ Verification of data provided from the SIS against the CMP informs how coursework visualizes for students in the CSU and UC eligibility tools, as well as how, and which, courses students can import directly into their CSU and UC applications.

| <div> Verified "a-g" course with a grade of C- or better Verified "a-g" course with a grade of D or lower Not a verified "a-g" course Course listed as "a-g" by school, but not found in UC CMP database Enrolled or planned course Subject area has been satisfied </div> | | | | |
|--|-----------|--|--|---|
| | 9th Grade | 10th Grade | 11th Grade | 12th Grade |
| F. Visual & Performing Arts 1 year required 0.5 years completed | | <div>Multimedia Design S1 2019-20 Completed A</div> | | |
| | | <div>Multimedia Design S2 2019-20 Completed D</div> | | |
| G. College-Preparatory Elective 1 year required 1 year completed | | | <div>Psychology S1 2021-22 Completed A</div> | |
| | | | <div>Sociology S2 2021-22 Completed A</div> | |
| Additional Coursework Unmatched "a-g" Courses Other High School Graduation Requirements Community College Preparatory Courses CTE Pathways Courses | | <div>Physical Education S1 2019-20 Completed A</div> | | <div>Basic English Lit III S1 2021-22 Completed A</div> |
| | | <div>Physical Education S2 2019-20 Completed A</div> | | <div>Basic English Lit III S2 2021-22 Completed A</div> |



CMP-Verified Courses and Grades in CaliforniaColleges.edu

https://www.californiacolleges.edu

Academic Planner | California Community Colleges | **CSU Eligibility** | UC Eligibility | CSU Application Info

Verified "a-g" course with a grade of C- or better

Verified "a-g" course with a grade of D or lower

Enrolled or planned courses

Subject area has been satisfied

| | | | | |
|--|---|--|--|----------------------------------|
| C. Mathematics 4 years recommended 3 years required 3.5 years completed Higher level courses have satisfied some lower courses. | MATH I A S1 2020-21 Completed C | MATH II A S1 2021-22 Completed D | OLR MATH I B SS2 2021-22 Completed C | MRWC A S1 2023-24 Enrolled |
| | | MATH II B S2 2021-22 Completed C | MATH III A S1 2022-23 Completed B+ | |
| | | | MATH III B S2 2022-23 Completed A | |



Validation for CMP-Verified Courses

https://www.californiacolleges.edu

Academic Planner California Community Colleges **CSU Eligibility** UC Eligibility CSU Application Info

Verified "a-g" course with a grade of C- or better Verified "a-g" course with a grade of D or lower Enrolled or planned courses Subject area has been satisfied



| | | | | |
|--|---------------------------------------|--|--|----------------------------------|
| C. Mathematics 4 years recommended 3 years required 3.5 years completed Higher level courses have satisfied some lower courses. | MATH I A S1 2020-21 Completed C | MATH II A S1 2021-22 Completed D | OLR MATH I B SS2 2021-22 Completed C | MRWC A S1 2023-24 Enrolled |
| | | MATH II B S2 2021-22 Completed C | MATH III A S1 2022-23 Completed B+ | |
| | | | MATH III B S2 2022-23 Completed A | |

In this example, a Grade of D in Math IIA has been validated by higher level courses and grades.



Courses That Are Not CMP-Verified

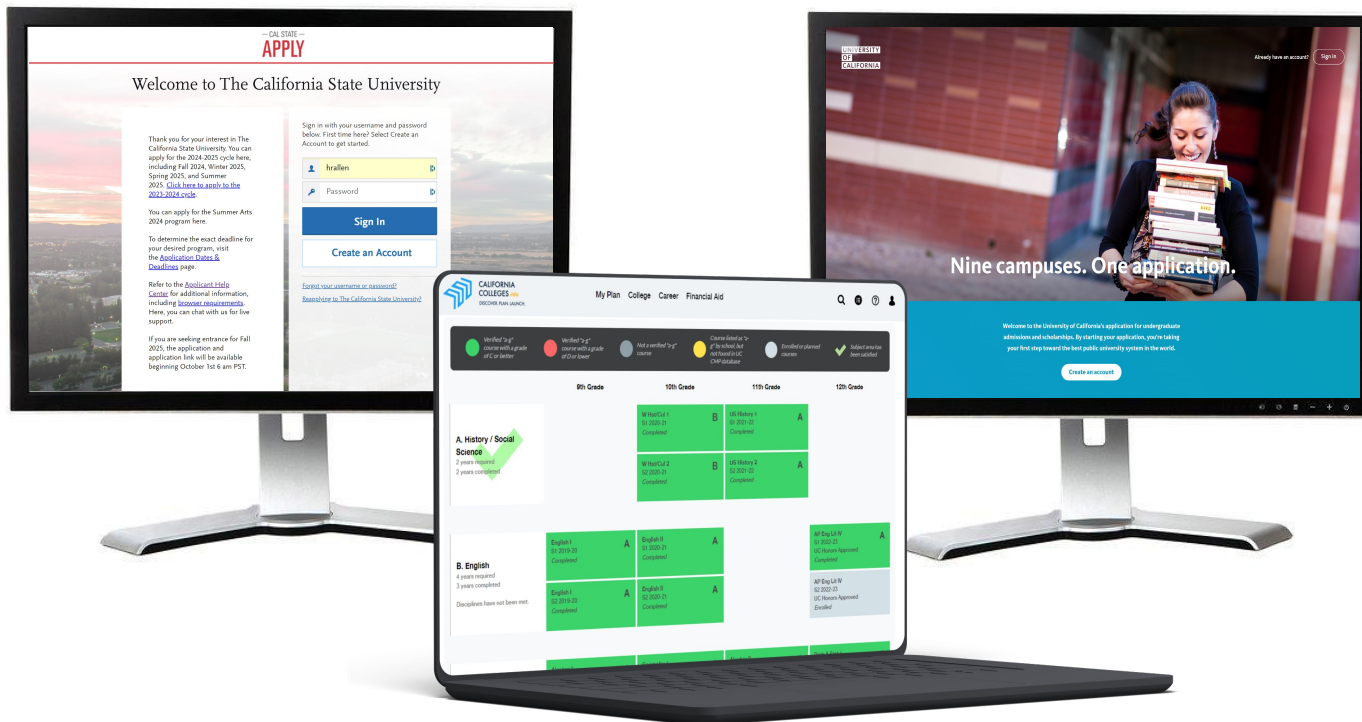
Courses in **yellow** are those where the district indicates the course as meeting an A-G subject area, but the course **cannot be verified** against the CMP.

| | |  <i>Not a verified "a-g" course</i> |  <i>Course listed as "a-g" by school, but not found in UC CMP database</i> |
|--|--|--|---|
| Additional Coursework Unmatched "a-g" Courses Other High School Graduation Requirements Community College Preparatory Courses CTE Pathways Courses | Health Ed S1 2020-21 Completed | | A+ |
| | History of Rock S1 2020-21 Completed | | A |
| | *PE 1 S2 2020-21 Completed | | A+ |
| | | | |



CALIFORNIA
COLLEGES.edu
DISCOVER. PLAN. LAUNCH.

Importing Verified Transcript Data





The CSU and UC Eligibility Tools

Helps students understand which of their courses **can be verified** against a school's official A-G List from the UC Course Management Portal (CMP)

- Found in:
 - Academic Planner

| Academic Planner | CCCs | CSU Eligibility | UC Eligibility | CSU Application Info | UC Application Info | Download PDF |
|---|------|--|----------------|---|---------------------|--------------|
| <div> Verified "a-g" course with a grade of C- or better Verified "a-g" course with a grade of D or lower Not a verified "a-g" course Course listed as "a-g" by school, but not found in UC CMP database Enrolled or planned courses Subject area has been satisfied </div> | | | | | | |
| 9th Grade | | 10th Grade | | 11th Grade | | 12th Grade |
| F. Visual & Performing Arts 1 year required 0.5 years completed | | MultimediaDsgn S1 2019-20 Completed A | | | | |
| | | MultimediaDsgn S2 2019-20 Completed D | | | | |
| G. College-Preparatory Elective 1 year required 1 year completed | | | | Psychology S1 2021-22 Completed A | | |
| | | | | Sociology S2 2021-22 Completed A | | |
| Additional Coursework Unmatched "a-g" Courses Other High School Graduation Requirements Community College Preparatory Courses CTE Pathways Courses | | Physical Education S1 2019-20 Completed A | | Basic English Lit III S1 2021-22 Completed A | | |
| | | Physical Education S2 2019-20 Completed A | | Basic English Lit III S2 2021-22 Completed A | | |

Eligibility Tool Printouts

Single student or bulk-print PDF of CSU and UC Eligibility tools. Useful as a **companion to the student's transcript** when completing their application

- ▶ Navigate to your Educator Dashboard
- ▶ Click Eligibility Tool Printouts

Legend

- Subject area has been satisfied
- Verified 'a-g' course with a grade of C- or better
- Verified 'a-g' course with a grade of D or lower
- Enrolled or planned courses
- Course reported as 'a-g' by school, but cannot be verified against UC CMP
- Course not indicated by your school as 'a-g'

CSU Eligibility Progress

Name: CCC Demo
ID: 50016
School: Demo Partner High
Grade: 12

CSU GPA

3.35

You're currently meeting the minimum GPA requirement for all CSU campuses. Great job!

Your courses and grades come from your school district. Transcript data was last submitted on 03/04/2021.

CSU "A-G" Progress



Based upon successful completion of coursework this term, for your grade level, you are missing the following number of years of "a-g" courses: 1

You appear to not be making progress toward completing courses recommended for your grade level in the following subject areas: B, D, E, F

Plan to take the courses you are missing and complete those courses with a C- or better to be eligible for CSU.

| "A-G" Courses | 9th Grade | 10th Grade | 11th Grade | 12th Grade |
|--|--|--|--|--|
| A. History / Social Science 2 years required 1.5 years completed 0.5 years applied from G. | World Hist (P) S1 2019-20 C+ World Hist (P) S2 2019-20 D- | US History S1 2019-20 A US History S2 2019-20 A | | |
| B. English 4 years required 3.5 years completed Disciplines have not been met. | Eng I (H) (P) S1 2018-19 D Eng I (H) (P) S2 2018-19 C | Eng II (P) S1 2019-20 C Eng II (P) S2 2019-20 C | English III S1 2019-20 A English III S2 2019-20 A | AP Eng Lit IV S1 2020-21 A AP Eng Lit IV S2 2020-21 A |
| C. Mathematics 4 years recommended | Algebra I (P) S1 2018-19 D | Geom (P) S1 2019-20 C | Algebra II S1 2019-20 A | Prob & Stat 1 S1 2020-21 A |

Yellow Course = Requires Review

Courses that surface in Yellow:

- ▶ Have been indicated by your district as an A-G course, but **could not be CMP matched** against a school's official A-G list
- ▶ **ALWAYS** require review!
- ▶ **Will require action**, including A-G Matching in Cal State Apply, if they should be included in the student's application



| | |
|---|---|
| Basic English Lit III S1 2021-22 <i>Completed</i> | A |
| Basic English Lit III S2 2021-22 <i>Completed</i> | A |



CALIFORNIA
COLLEGES.edu
DISCOVER. PLAN. LAUNCH.

Cal State Apply Course Import



CALIFORNIA
COLLEGES.edu
DISCOVER. PLAN. LAUNCH.

<https://vimeo.com/902085427>



CaliforniaColleges.edu Course Import

| What It Does | What It Does NOT Do |
|---|--|
| Saves time: Can <u>significantly reduce</u> the time required to complete CSU and UC applications. | It does NOT replace the need to review all course records for accuracy prior to application submission. |
| Reduces errors: Verifies high school course records against the CMP and pre-populates that information into Cal State Apply and UC applications. | |
| Supports intentional review: Allows counselors and college access staff to identify and focus time and energy on students records that are the most complex. | It does NOT replace the need for counselors and/or college access staff to support students. |



What About Dual Enrollment?

- ▶ Dual Enrollment (DE) is a method that students can use to meet A-G requirements, but these courses cannot be verified against the CMP.
- ▶ DE will surface in Yellow as “Requires Review” to indicate to the student that **action is required** in their CSU and UC applications.
- ▶ It is by design that DE courses cannot be imported into the high school coursework section of Cal State Apply and the UC Application:
 - College courses must be entered into the College sections of both applications, which are programmed to recognize one semester of College coursework as fulfilling a full year of A-G.

| Not a verified "a-g" course | | Course listed as "a-g" by school, but not found in UC CMP database | |
|---|--|--|--|
| Additional Coursework Unmatched "a-g" Courses Other High School Graduation Requirements Community College Preparatory Courses CTE Pathways Courses | Health Ed S1 2020-21 Completed | A+ | |
| | ENGL-1A Reading & Composition S1 2023-24 Completed | A | |
| | *PE 1 S2 2020-21 Completed | A+ | |
| | | | |



New Ed Code (Summer 2024)

The following subsections of code is a policy anchor, which establishes CaliforniaColleges.edu as the future state infrastructure for the work outlined below:

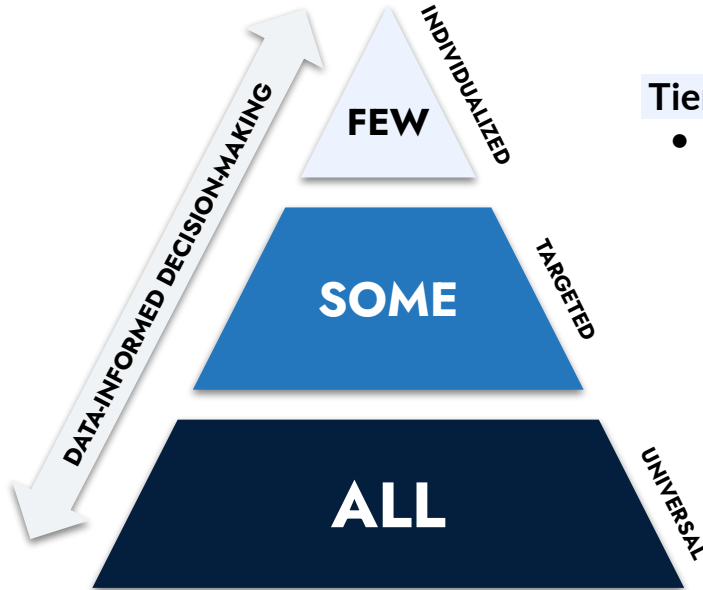
EDC § 48800(c) (c) A pupil shall receive credit for community college courses that the pupil completes at the level determined appropriate by the governing boards of the school district and community college district. Using available funding apportioned to the community college district pursuant to Section 84750.4, the governing board of the community college district shall report the pupil's completed courses and grades received through eTranscript California, also referred to as "eTranscriptCA," for purposes of enabling the uniform integration of the pupil's completed courses and grades received into the pupil's universal and electronic high school transcript that is housed on the CaliforniaColleges.edu platform.

The implementation timeline for the code section above are not yet determined, but the opportunity and intent is clear.



Within a MTSS Framework

CaliforniaColleges.edu course import feature enables students to quickly upload their verified academic history into their college applications. This process shortens the amount of time spent on applications and decreases the chances of student error.



Tier 3 – One-on-One Conversations

- Time saved on assisting every student with manually inputting their academic history frees up counselors to provide more intensive guidance to students with more unique situations.

Tier 2 – Courses Requiring Review

- Students with unverified courses can be supported to manually add or edit course records that could not be imported

Tier 1 – Student Course Import

- Verified coursework will import for students in a partner district



Table Talk Discussion

1

How does your district or site monitor course offerings to ensure all A-G courses are accurately registered on the Course Management Portal?

2

What systems can be put in place moving forward to ensure accurate course listings?

3

What work needs to be done now to ensure students are able to import their courses to their college applications?





CALIFORNIA
COLLEGES.edu
DISCOVER. PLAN. LAUNCH.

Implementing Equity-Focused State Policies

Districts can use the data and reporting tools on CaliforniaColleges.edu to make it easier to implement and comply with equity-focused state policies.



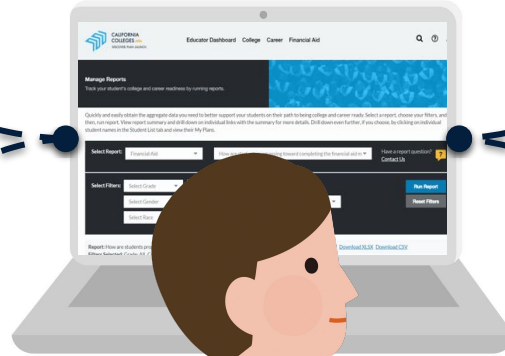
AB 132

Cradle-to-Career
Data System



AB 130

A-G Completion
Improvement Grant
Program



AB 469

Universal
FAFSA/CADAA for
Graduating Seniors



AB 2015

Financial Aid
Information
Prior to Grade 12



CALIFORNIA
COLLEGES.edu
DISCOVER. PLAN. LAUNCH.

Alignment to District Goals and Priorities

Through strategic implementation, CaliforniaColleges.edu can support with:

- ▶ Expanding career/college exploration and knowledge for all students.
- ▶ Increasing A-G completion for high school students.
- ▶ Reducing the burden on students when applying to college through CMP course alignment.
- ▶ Increasing college application support and completion for all students.
- ▶ Increasing CSU and UC application support and completion for CSU/UC-eligible students.
- ▶ Expanding awareness of financial aid and increasing financial aid completion.

How do these align to your site/district goals, priorities or initiatives?

LCAP



SPSA

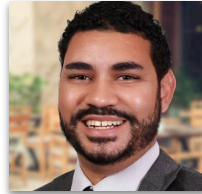


CALIFORNIA
COLLEGES.edu
DISCOVER. PLAN. LAUNCH.

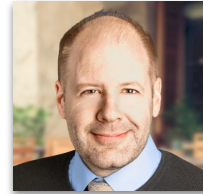
Implementation Support

CCGI has team members dedicated to serving Riverside, San Bernardino, Imperial, and San Diego Counties:

Our **Engagement and Implementation** team leads outreach, training and implementation support for CaliforniaColleges.edu.



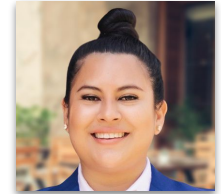
**Julian
McDaniels**
Director



Chris Dech
Senior Manager



**Shardai
Zaragoza**
Senior Manager



Kat Zevallos Pastor
Senior Training
Manager

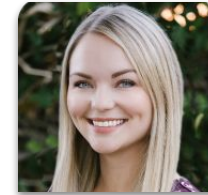
Our **Data Services and Technical Assistance** teams help districts bring their data files to CaliforniaColleges.edu and support CMP alignment.



**Shannon
Bilton-Terrell**
District Data
Support Analyst



Carmen Harris
District Data
Support Analyst



Cheyenne Zamora
Technical
Assistance
Manager



Christine Cortez
Technical
Assistance
Manager

Check Out the Resource Hub

The CaliforniaColleges.edu
Resource Hub contains
on-demand resources for
educators.

Visit

[californiacolleges.edu/
resourcehub/resources/](https://californiacolleges.edu/resourcehub/resources/)



Managing Your Student Account



Career Assessments



Career, College, and Major Exploration Tools



College and Career Planning Tools



College Application Tools



How to Launch and Track Your CCCApply Application

The CCCApply application acts as your gateway to the California Community College campuses. By launching your application through CaliforniaColleges.edu, you and your counselor can track your all your community college applications in one place and verify which ones have been submitted.

START THE TUTORIAL

How to Launch Your Cal State Apply Application

The process of deciding what you want to do about college is complex, but submitting your application shouldn't be. By launching your Cal State Apply application through CaliforniaColleges.edu, you can track the status of all your applications to CSU campuses.

START THE TUTORIAL

How to Import Courses and Grades Into Your Cal State Apply Application

Using CaliforniaColleges.edu to import your courses and grades into your Cal State Apply application ensures the accuracy of your information by verifying your data and helping prevent errors that can delay or deny admission.

START THE TUTORIAL

How to Track Your Cal State Apply Application Status

In CaliforniaColleges.edu, you and your counselor can track your Cal State Apply application status and verify that it has been submitted.

START THE TUTORIAL

How to Launch Your UC Application

Applying to a UC can be an important step toward achieving your college and career goals. You can launch your application directly from CaliforniaColleges.edu.

START THE TUTORIAL



CALIFORNIA
COLLEGES.edu
DISCOVER PLAN LAUNCH

Educator-Led Lesson Guides and Worksheets

- ▶ Sample educator-led lessons and activities
- ▶ For grades 6-12
- ▶ Makes use of the career, college, and financial aid tools
- ▶ Fillable PDFs



RESOURCEhub

Resources ▾ Help Tutorials Digital Resources News English ▾

Partner Student Accounts

Basic Student Accounts

Partner Educator Accounts

Basic Educator Accounts

Parent Accounts

General Community Members

Resources for Educators with Partner Accounts

On this page, you'll find information and resources specific to you as an educator with a Partner Account.

Educator-Led Lesson Guides and Worksheets

Educator Guides, paired with Student Worksheets, are sample educator-led lessons and activities for grades 6-12 that make use of the career, college, and financial aid tools on CaliforniaColleges.edu. To access the Educator Guides and Student Worksheets, simply click on the dark blue bars below for the type of resource you're looking for. This will expand each section and allow you to see the different guides and worksheets available. Clicking on the "Download" button will automatically download the Educator Guide or Student Worksheet.

| | |
|----------|---|
| Grade 6 | + |
| Grade 7 | + |
| Grade 8 | + |
| Grade 9 | + |
| Grade 10 | + |
| Grade 11 | + |
| Grade 12 | + |

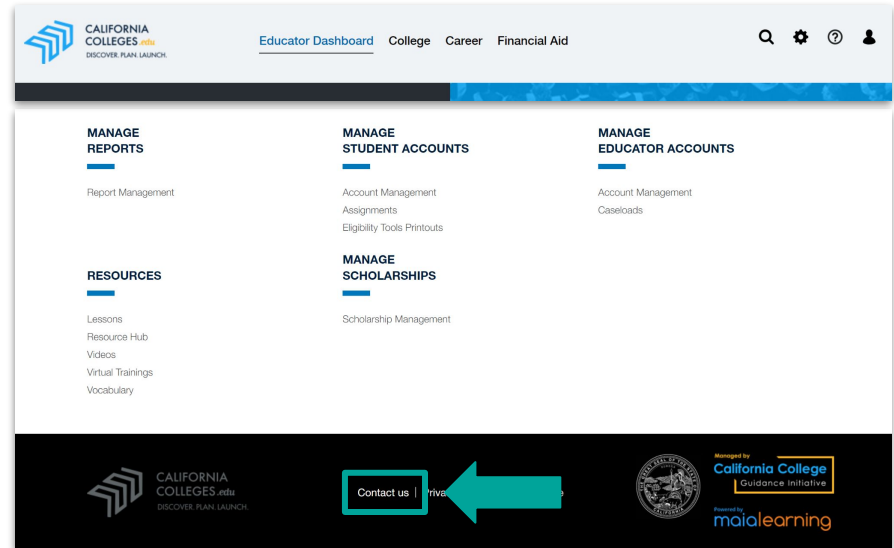


CALIFORNIA
COLLEGES.edu
DISCOVER. PLAN. LAUNCH.

Need help? Contact Us

There are multiple ways to Contact Us when you have questions or need support:

- 1 Click the “Contact Us” link at the bottom of every page on the platform
- 2 Visit californiacolleges.edu/#/contact-us or scan the QR code:





Not Yet a Partner?

California districts/LEAs that serve 9th-12th grade students are required to enter into a data-sharing agreement with CCGI by January 2026 (per EDC § 60900).



To learn about bringing CaliforniaColleges.edu to your district, visit: californiacolleges.edu/learnmore/partnership/



Share your interest and enthusiasm about CaliforniaColleges.edu with your district leader and/or partnership decision-maker.



When your district is ready to explore partnership, [Contact Us](https://www.californiacolleges.edu/#/contact-us) at www.californiacolleges.edu/#/contact-us



Appendices

- ▶ [Introducing CaliforniaColleges.edu](#) — View this joint announcement from the California Department of Education, California Cradle-to-Career Data System, University of California, California State University, California Community Colleges, and California Student Aid Commission.
- ▶ [CCGI in the California Education Code](#) — Review the Ed Code sections that include the California College Guidance Initiative and/or California Colleges.edu
- ▶ [AB 132 and the Cradle-to-Career Data System](#) — Learn about AB 132 and the role of CaliforniaColleges.edu in the California Cradle-to-Career Data System.
- ▶ [The California College Guidance Initiative](#) — Learn more about the work and mission of CCGI, our partnerships, and team members.
- ▶ [CCGI Newsroom](#) — See where our work has been featured by local, state, and national media outlets, as well as numerous studies and reports that feature our approaches and impact.



Thank You!