

# CaliforniaColleges.edu

Darice Ingram



# California College Guidance Initiative

## Who We Are

- State-funded nonprofit.
- Manager of **CaliforniaColleges.edu**.
- Critical part of infrastructure for the **Cradle-to-Career** system.

## Why We're Here

- To smooth the path to college and career for all California students.
- To ensure equitable outcomes for all students, especially the underserved.

## What We Do

- College and career planning.
- Capacity building.
- Provide data-informed tools to students, parents, and educators.





CALIFORNIA  
COLLEGES.edu  
DISCOVER. PLAN. LAUNCH.

# What is CaliforniaColleges.edu?

**CaliforniaColleges.edu is the state of California's official college and career planning platform.**

Benefits of a CaliforniaColleges.edu account include access to free tools to help students with:



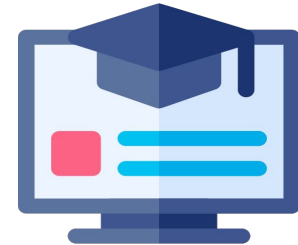
**Career  
Planning**



**College  
Planning**



**Financial  
Aid**



**Progress  
Tracking**



CALIFORNIA  
COLLEGES.edu  
DISCOVER. PLAN. LAUNCH.

# What is CaliforniaColleges.edu?

## California's official college and career planning platform.



**Built for Californians** Designed to meet the specific needs of California students, parents, educators, and school districts.



**Connects California Systems** The only platform integrated with all three state public higher education systems (CCC, CSU, UC) and the California Student Aid Commission (CSAC).



**Written into California Ed. Code** CaliforniaColleges.edu is authorized service provider for all California school districts.



**Funded by the State of California** CaliforniaColleges.edu is funded by the State of California through Proposition 98.



**Critical part of infrastructure for the California's Cradle-to-Career system** AB 132 outlines specific steps in order to implement the Cradle-to-Career System and realize its objectives, including making CaliforniaColleges.edu tools and services free to all California school districts serving 6-12th grade students and designating CaliforniaColleges.edu as the preferred starting point for all applications to California public colleges, FAFSA and CADAA.



CALIFORNIA  
COLLEGES.edu  
DISCOVER. PLAN. LAUNCH.

# Universal Access to CaliforniaColleges.edu

One goal of the Cradle-to-Career legislation is to make CaliforniaColleges.edu available to every school district, student, and educator in California by 2026.

**178**

Official school district partners

**1M+**

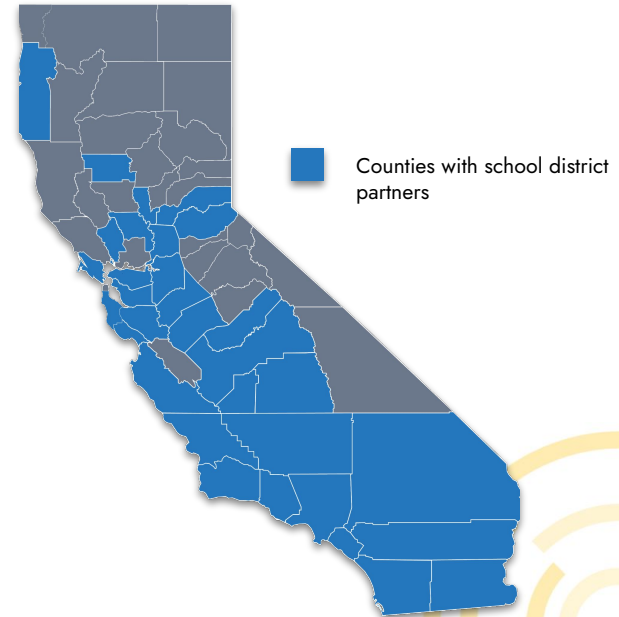
6th-12th grade students served

**81**

School districts in the pipeline for partnership by Fall 2023

**759k**

Additional students in the pipeline who will be served by Fall 2023





CALIFORNIA  
COLLEGES.edu  
DISCOVER. PLAN. LAUNCH.

# What Tools are Available on CaliforniaColleges.edu?

CaliforniaColleges.edu provides tools to empower students and educators alike.

We provide students with:



- Career exploration tools
- College and major search tools
- Financial aid lessons
- CSU/UC eligibility tools
- College and financial aid application integration

We provide educators with:



- College and career planning tools *in one place*
- Ability to track student progress and better target interventions
- Data and reporting tools to help districts comply with regulatory requirements

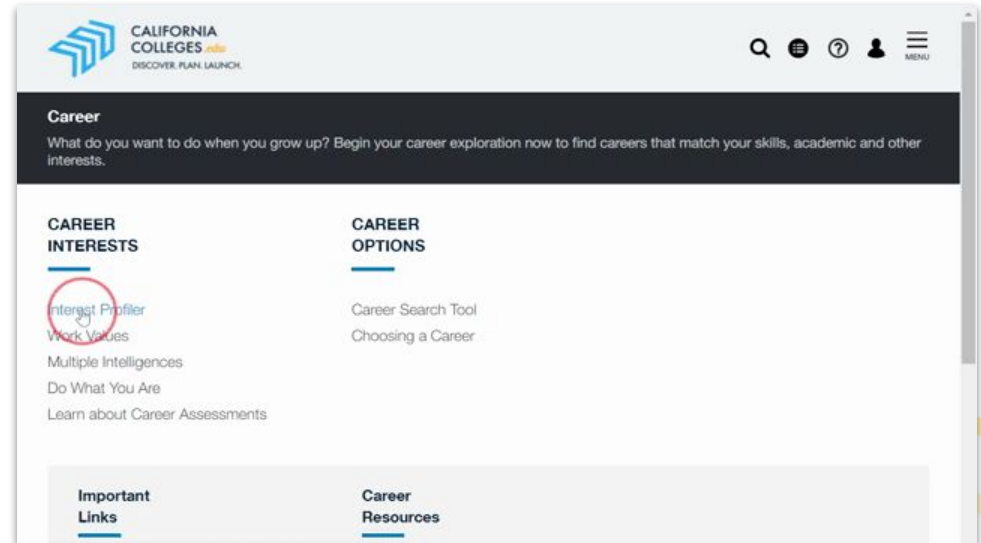


# Career Assessments

**Our career assessments can help students identify their values, interests, learning styles, and personalities and learn how they can connect to fulfilling careers.**

## Our assessments include:

- Interest Profiler
- Learning & Productivity
- Intelligences
- Personality







# Career Search Tool

**Our career search tool helps students find the right career path by figuring out what they want to be and what it will take for them to get there.**

**CaliforniaColleges.edu allows students to:**

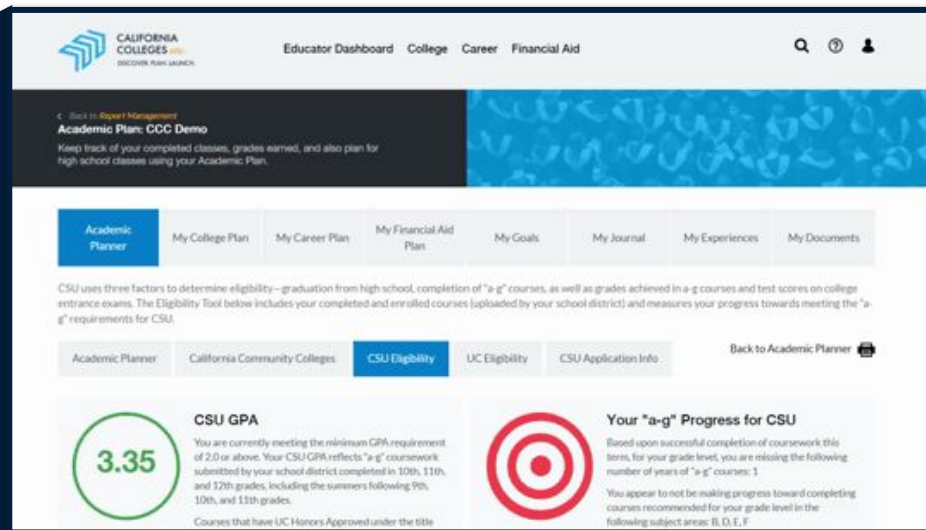
- Explore careers that match their interests.
- Learn what careers involve.
- See what kind of pay and growth potential jobs offer.
- Understand what education and skills they will need to pursue their career of choice.

The screenshot shows the 'Career Search Tool' interface. At the top, a dark header contains the title 'Career Search Tool' and a brief description: 'Explore careers that match your interests. Find careers by using the keyword search or the Industry and Bright Outlook filters. To learn more about our career data, see [College, Major, and Career Data Sources](#).' Below the header, there are three search filters, each with a text input field and a blue 'Search' button. The first filter has the text 'Scientist' in the input field. The second filter is labeled 'Select Industry' with a dropdown arrow. The third filter is labeled 'Select Bright Outlook Occupation' with a dropdown arrow. At the bottom left, it says 'Results 179' next to a small 'Compare' button with an information icon. At the bottom right, there is a larger dark 'Compare' button.



# CSU & UC Eligibility Tools (Students)

Students in partner districts can use CSU and UC eligibility tools to quickly track their progress toward meeting “a-g” requirements.

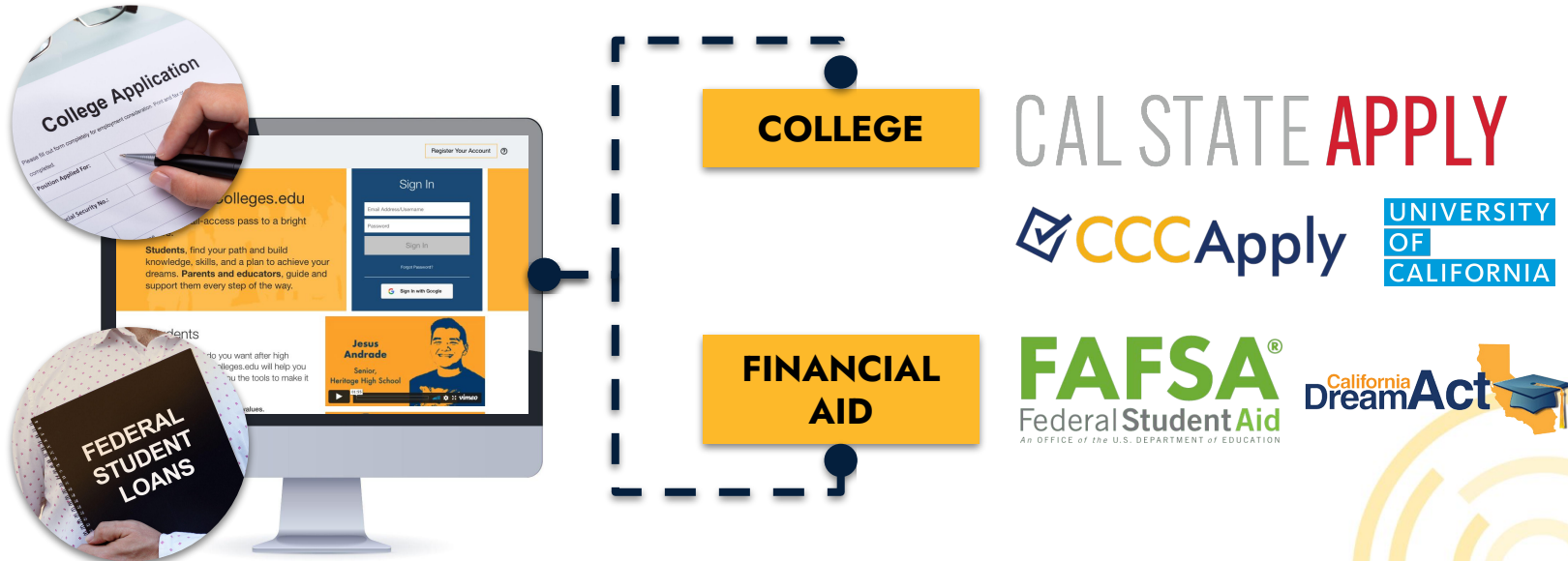
The screenshot shows the 'Academic Plan: CCC Demo' interface. At the top, there's a navigation bar with 'Educator Dashboard', 'College', 'Career', and 'Financial Aid'. Below this, a header section reads 'Academic Plan: CCC Demo' and 'Keep track of your completed classes, grades earned, and also plan for high school classes using your Academic Plan.' A horizontal menu includes 'Academic Planner' (selected), 'My College Plan', 'My Career Plan', 'My Financial Aid Plan', 'My Goals', 'My Journal', 'My Experiences', and 'My Documents'. Below the menu, a paragraph explains that CSU uses three factors to determine eligibility: graduation from high school, completion of 'a-g' courses, and college entrance exam scores. A secondary menu shows 'Academic Planner', 'California Community Colleges', 'CSU Eligibility' (selected), 'UC Eligibility', and 'CSU Application Info'. The main content area is divided into two sections: 'CSU GPA' showing a current GPA of 3.35 and 'Your "a-g" Progress for CSU' which includes a target icon and text about missing 'a-g' courses.



CALIFORNIA  
COLLEGES.edu  
DISCOVER. PLAN. LAUNCH.

# College & Financial Aid Application Integration

Students can launch college and financial aid applications directly from [CaliforniaColleges.edu](https://CaliforniaColleges.edu) and track their progress.





CALIFORNIA  
COLLEGES.edu  
DISCOVER. PLAN. LAUNCH.

# Financial Aid Tools

**We provide students with:**

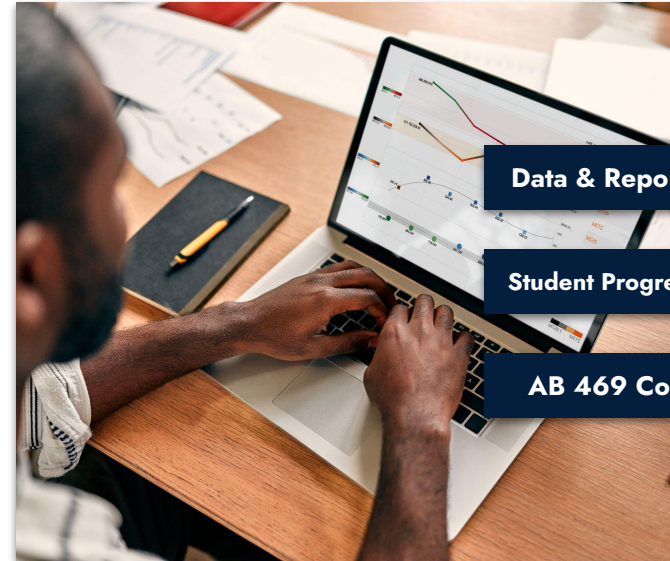


**Financial Aid Lessons**

**Application Launch**

**Offer Comparison Tool**

**We provide educators with:**



**Data & Reporting Tools**

**Student Progress Tracking**

**AB 469 Compliance**



# Tools and Support for Educators

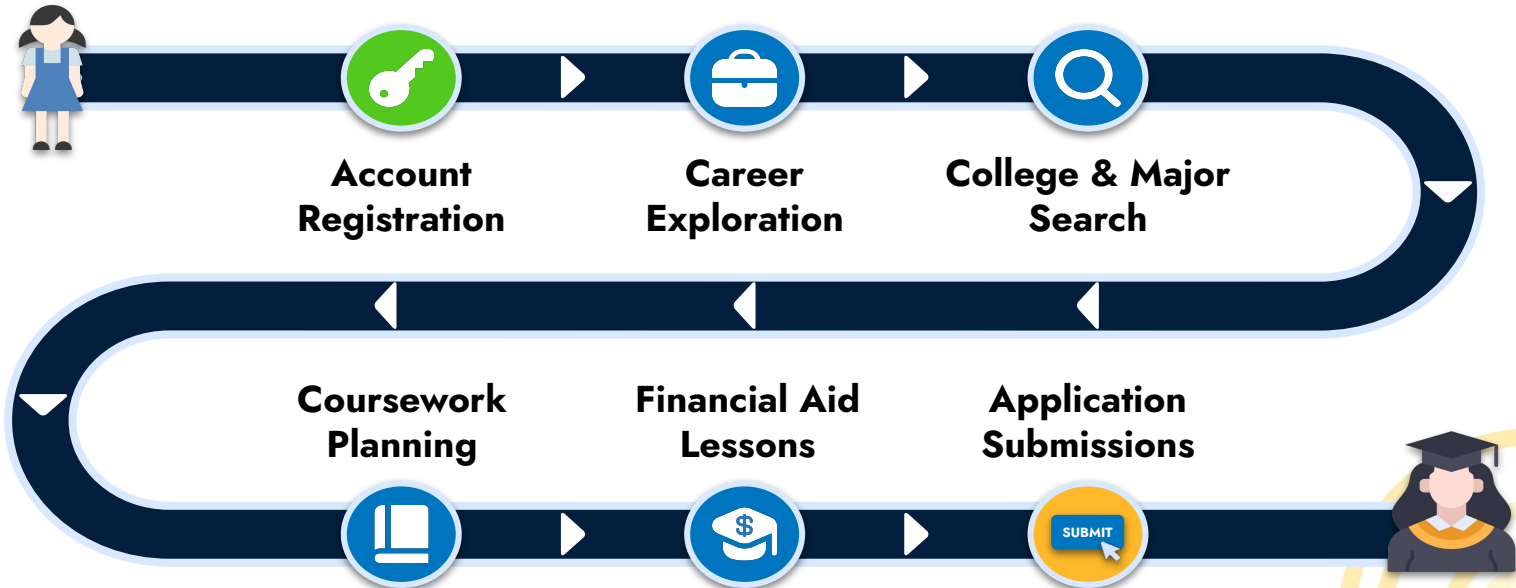
Educators in partner districts can run reports to monitor student progress on their activities on CaliforniaColleges.edu.





# Smoothing the Path for Students

When students are signed in to CaliforniaColleges.edu, educators can track their activities and application progress using built-in reporting tools.







CALIFORNIA  
COLLEGES.edu  
DISCOVER. PLAN. LAUNCH.

# Implementing Equity-Focused State Policies Using CaliforniaColleges.edu

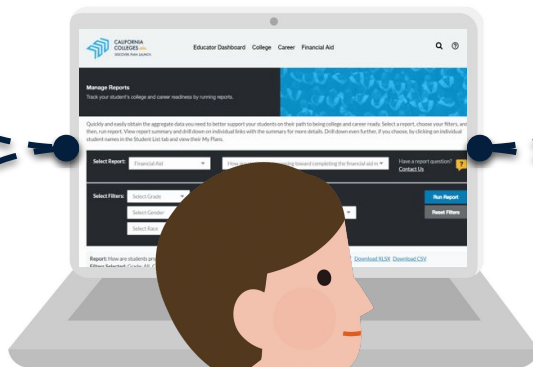
Districts can use the data and reporting tools on CaliforniaColleges.edu to both make it easier to implement and meet compliance with equity-focused state policies and investments.



**2021 Budget Act**  
Regional K-16 Education  
Collaboratives Grant  
Program



**AB 469**  
Universal FAFSA/  
CADAA for Graduating  
Seniors



**AB 132**  
Cradle-to-Career  
System



**AB 130**  
A-G Completion  
Improvement Grant  
Program



CALIFORNIA  
COLLEGES.edu  
DISCOVER. PLAN. LAUNCH.

# What is CaliforniaColleges.edu?



## Financial Aid Application Reporting

**Javier & Yvonne**  
*Student & Educator*

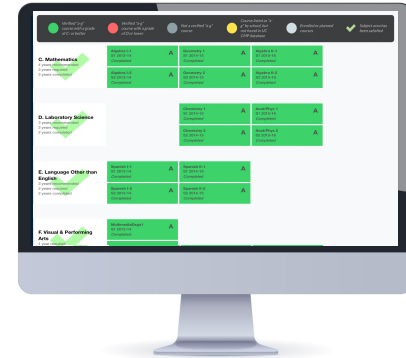




CALIFORNIA  
COLLEGES.edu  
DISCOVER. PLAN. LAUNCH.

# CSU Eligibility Tools (CMP)

Districts can regularly upload students' academic transcript data to CaliforniaColleges.edu to support planning, goal tracking, and data verification.





CALIFORNIA  
COLLEGES.edu  
DISCOVER. PLAN. LAUNCH.

# Cal State Apply Course Migration Demo





CALIFORNIA  
COLLEGES.edu  
DISCOVER. PLAN. LAUNCH.

# Applications (2022-2023 Academic Year)



Institution	Applications Submitted (7/1/21 through 6/30/22)
California State University	124,848
California Community Colleges	192,318
University of California	25,296
FAFSA/CADAA	16,267

# Questions?



CALIFORNIA  
COLLEGES.*edu*



The Official College & Career Planning  
Platform of the State of California

SHARE, LEARN AND  NNECT





CALIFORNIA  
COLLEGES.edu  
DISCOVER. PLAN. LAUNCH.

# Reflection

How could you leverage  
CaliforniaColleges.edu to  
support **your district's goals?**





CALIFORNIA  
COLLEGES.edu  
DISCOVER. PLAN. LAUNCH.

# Survey

Please take a few moments to tell us what would be most useful to you in learning more and implementing CaliforniaColleges.edu.

Scan Me!



<https://forms.gle/LSyAo1Bsem75BMzN7>



# Appendices

- ▶ [About AB 132 and the Cradle-to-Career Data System](#) - learn about the role of CaliforniaColleges.edu in the State's data system
- ▶ [CaliforniaColleges.edu Resource Hub](#) - a single site that compiles resources for students, parents and educators, including step-by-step informational guides to support use of the tools, video demonstrations, and testimonials from those who've used platform
- ▶ [Virtual Training Series for School Counselors](#) - Pre-recorded, 30 minute videos demonstrating use of key areas of CaliforniaColleges.edu that counselors can access at any time. If you'd prefer to attend a "live" virtual session with one of our trainers, the schedule and registration links can be found [here](#)
- ▶ [Subscribe to our mailing list](#) - get important announcements about CaliforniaColleges.edu enhancements and other updates
- ▶ [CCGI Newsroom](#) - see where our work has been featured by local, state and national media outlets, as well as numerous studies & reports that feature our approaches and impact



# Contact Us

[CommunityEngagement@CaliforniaColleges.edu](mailto:CommunityEngagement@CaliforniaColleges.edu)



CALIFORNIA  
COLLEGES *.edu*



The Official College & Career Planning  
Platform of the State of California

SHARE, LEARN AND  NNECT

