

CaliforniaColleges.edu

CSU Monterey Bay

February 11, 2025



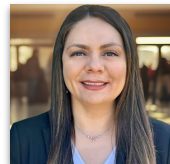
CALIFORNIA
COLLEGES.edu



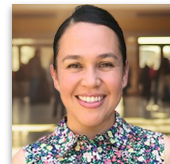
The State of California's Official
College and Career Planning Platform



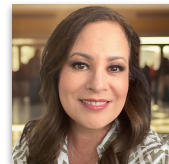
Link to Deck
qr.codes/uraPKF



**Selma
Gonzalez**
Director



**Geraldina
Espinoza**
Senior Manager



**Anna Lorena
Garcia**
Senior Manager



**Ashley
Shaffer**
Training
Manager



Today's Goals

1

Discuss key components of Implementation Planning

2

Explore application tools and career-major-college exploration tools from a student and educator's perspective

3

Connect with others to share implementation ideas and experiences





Student and Educator Tools

Career



Career Assessments

Career Search & Favorite

College & Career Lessons

Life Planner & Journal

Student Activity Reports

College



College & Major Search

CSU & UC Eligibility

Application Integrations

CMP Alignment Support

Eligibility Reports

Application Status Reports

Financial Aid



Financial Aid Lessons

Application Integrations

Lesson Progress Reports

Application Status Reports



Celebration Reflection

Introduce yourself to anybody at your table you don't know and then share your answers to the following question:

- ▶ What is one element of CaliforniaColleges.edu that you implemented that you're most happy about?



Implementation Planning



CALIFORNIA
COLLEGES *.edu*



The Official College & Career Planning
Platform of the State of California

Implementation Support

CCGI has team members dedicated to serving the Central California region:

Our **Engagement and Implementation** team leads outreach, training and implementation support for CaliforniaColleges.edu.



Selma Gonzalez
Director



Geraldina Espinoza
Senior Manager



Anna Lorena Garcia
Senior Manager



Ashley Shaffer
Training Manager

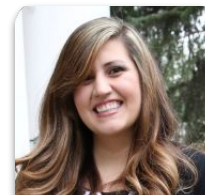
Our **Data Services** and **Technical Assistance** teams help districts bring their data files to CaliforniaColleges.edu and support CMP alignment.



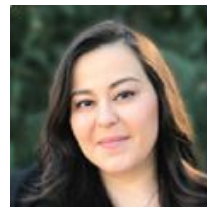
Maria Cavallaro
District Data
Support Analyst



Ryan Cameron
District Data
Support Analyst



Amy Martinez
Technical Assistance
Manager



Patty Zarco
Technical Assistance
Director



Key Roles Named in the ITP

What is the District Leadership Team?	A cross-functional team that advances your district's goals of partnership with CCGI and that is focused on leveraging CaliforniaColleges.edu to impact students' college & career readiness outcomes.
Point-of-Contact (POC)	Oversees partnership efforts and focuses on strategy development, execution, educator support, and implementation.
Data Lead	Works on data files, establishes regular upload routines, and collaborates with colleagues in necessary updates in the SIS.
CMP Manager	Works to ensure necessary updates are made to the CMP "a-g" list for all schools in the district.



Implementation Leadership Team

DETERMINE	GUIDING QUESTIONS	EXAMPLES OF ACTION STEPS
District Implementation Team	<ul style="list-style-type: none">— Who will be involved in implementing the platform?— Who is involved in college and career readiness?— What key roles can support this work?	<ul style="list-style-type: none">— Establish an implementation team that is representative of various stakeholders who will support in the implementation of this work:<ul style="list-style-type: none">— Elementary 6th— Middle 7-8— High School— Continuation/Alternative— District Leadership— Establish when/how the team will meet to develop implementation plan

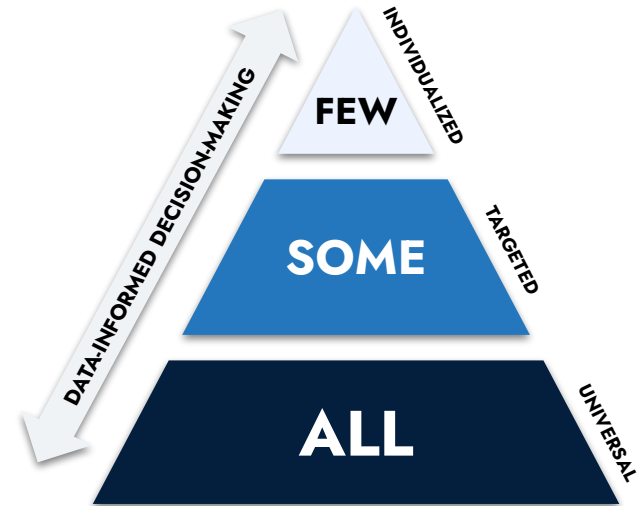


CASC California Standards

Standard 4: Multi-Tiered Systems of Support

ELEMENT 4A: CA MTSS FRAMEWORK - Effective school counselors design and deliver programs and services aligned with the California MTSS framework.

ELEMENT 4B: DATA INFORMED DECISION MAKING - Effective school counselors utilize data to inform decision-making and drive improvements in student outcomes.



Alignment to District Goals and Priorities

Through strategic implementation, CaliforniaColleges.edu can support with:

- ▶ Expanding career/college exploration and knowledge for all students.
- ▶ Increasing “a-g” completion for high school students.
- ▶ Reducing the burden on students when applying to college through CMP course alignment.
- ▶ Increasing college application support and completion for all students.
- ▶ Increasing CSU and UC application support and completion for CSU/UC-eligible students.
- ▶ Expanding awareness of financial aid and increasing financial aid completion.

How do these align to your site/district goals, priorities or initiatives?

LCAP



SPSA

Initial Implementation Planning

Developing a comprehensive Implementation Plan takes time. Below are some focus areas your district has indicated interest in. Are there additional components of the tools you would like to implement?

Career-Major-College Exploration

- 6th-12th College & Career Experience
- Careers Assessments and Framework

Academic Planner & Eligibility Tools

- Understanding Visualization of A-G eligibility on CaliforniaColleges.edu

College & Financial Aid Applications

- Course Import, Educator Reports, Strategic Support

Student Lessons

- Scope & Sequence, Lesson Planning, Vertical Alignment

Implementation Planning Year Zero

- ▶ **POC Overview** Spring 2024
- ▶ **Overview** HS Counselor- 7/23
- ▶ **Career Exploration** - CTE
Counselors 8/24
- ▶ **College Integration/Course
Import** - HS Counselor 9/27
- ▶ **Financial Aid/Eligibility** - HS
Counselors Tools-10/24



Danelle Mercer, PPS Specialist
Salinas Union High School District



Connection Reflection

Find someone who has the same color shirt as you and is not from your district.

Take four minutes to discuss the following questions:

- ▶ Describe your site/district's approach to implementing the use of CaliforniaColleges.edu tools with students.
 - Do you have an implementation team? Who is on it?
 - If you need an implementation team, who is well-positioned to take on the team roles?





Implementation Steps

1

Identify Implementation Leadership Team

2

Determine your overall goal for implementation

3

Prioritize key components to implement first

4

Identify training and resources needed to implement

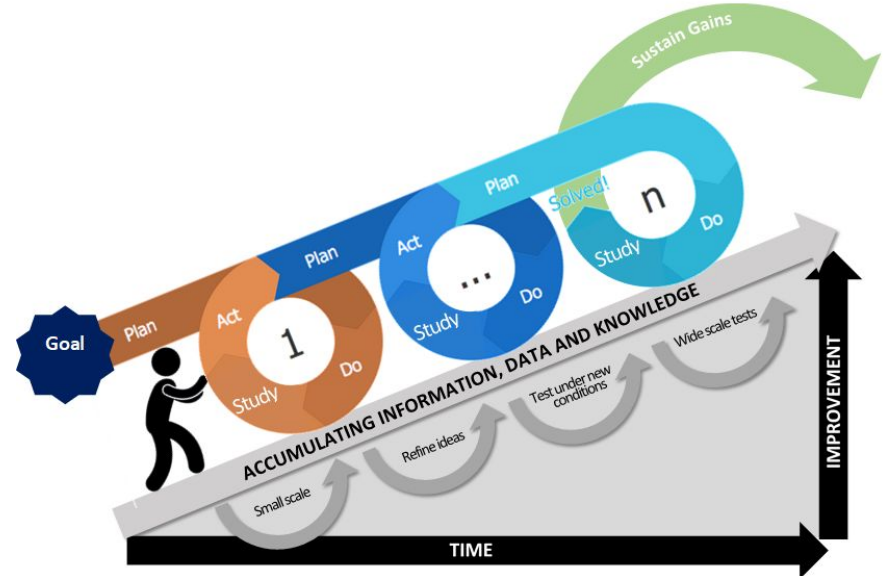
5

Develop a process and implement

6

Plan-Do-Study-Act...Repeat

Plan-Do-Study-Act



Career-Major-College Exploration



CALIFORNIA
COLLEGES *.edu*

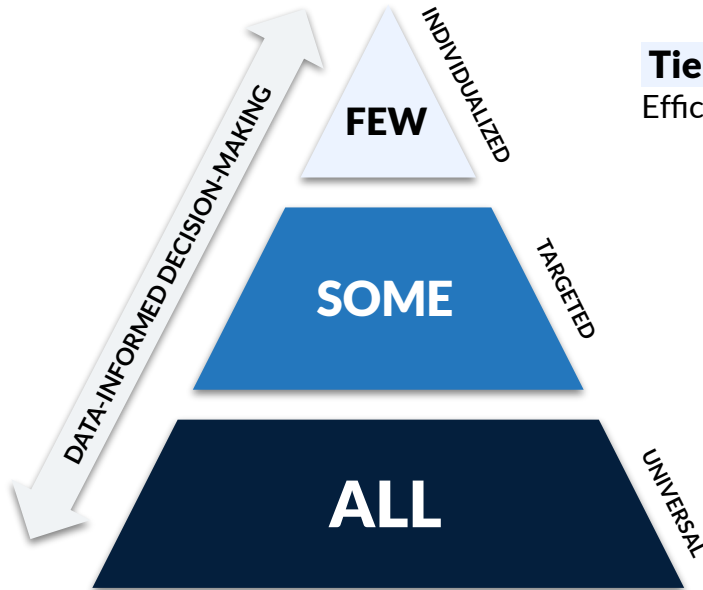


The State of California's Official
College and Career Planning Platform



Within an MTSS Framework

CaliforniaColleges.edu can be leveraged to support Tier 1 learning for all students, while increasing efficiency and ability for educators to strategically intervene with those who need support at Tier 2 and 3.



Tier 3 – Intensive Interventions

Efficiencies at Tier 1 and 2, free time for educators to provide 1:1 support.

Tier 2 – Targeted Interventions

Educator tools and reports on CaliforniaColleges.edu allow for targeted interventions with individuals or groups of students.

Tier 1 – Universal Interventions

CaliforniaColleges.edu is the state's official college and career planning platform, designed for all 6th-12th grade students.



CALIFORNIA
COLLEGES.edu
DISCOVER. PLAN. LAUNCH.

Career-Major-College Exploration

Career Assessment

Students take Interest Profiler, Learning & Productivity, Work Values, Intelligences, Personality, and/or Skills assessment(s).



Career Exploration

Based on assessment results, students click on matching careers, go to corresponding fact sheets, and use Career Search.



Major Exploration

Based on career interests, students explore programs and majors that interest them & learn more about what they involve.



College Exploration

Based on major exploration and using College Search, students find colleges that match their needs.



Provide more than one opportunity to take Career Assessments and give students time to review their results.

**Career Assessment
Reports**



Students favorite careers they like.
Connect careers to career pathways.

Favorited Careers



Connect majors to careers and courses in high school to prepare

**Favorited
Majors/Programs**



Ensure students' Academic Planners match their desired career, college and major choices

Favorited Colleges



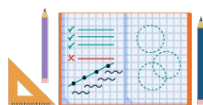
CALIFORNIA
COLLEGES.edu
DISCOVER. PLAN. LAUNCH.

One Place for College and Career



TOOLS

Support your progress



MAP OUT YOUR FUTURE

Tools to Plan, Set Goals, and Record Progress



BUILD YOUR KNOWLEDGE

College, Career, and Financial Aid Lessons



INTENTIONAL EDUCATOR INTEGRATIONS

Reporting Tools to Inform Student Support



Career Educator Reports

- ▶ Which students have favorited (❤️) at least one career?
- ▶ Which careers have students favorited (❤️)?

Select Report: Career

Which careers have students favorited (❤️)?

Have a report question?
[Contact Us](#)

Select Filters:

Select Grade

Select Educator

Select Caseload

Select Gender

Select Ethnicity

Select Special Population

Select Race

Start Date: MM/DD/YYYY

End Date: MM/DD/YYYY

Run Report

Reset Filters

Report: Which careers have students favorited (❤️)?

Filters Selected:

Actions: [Print](#) [Download XLSX](#) [Download CSV](#)

Summary

Career Name	Number of students that ❤️ this Career
<u>Accountants and Auditors</u>	4
<u>Actors</u>	4
<u>Actuaries</u>	5
<u>Acupuncturists</u>	5
<u>Acute Care Nurses</u>	7
<u>Adapted Physical Education Specialists</u>	4



College & Major Educator Reports

- ▶ Which students have favorited (♥) at least one:
 - Major?
 - College?
- ▶ Which majors have students favorited (♥)?
- ▶ Which colleges have students favorited (♥)?
- ▶ Which colleges have been favorited (♥) by institution type?

Select Report: CollegeWhich colleges have students favorited (♥)?

Have a report question?
[Contact Us](#)

Select Filters: Select GradeSelect EducatorSelect Caseload

Select GenderSelect EthnicitySelect Special Population

Select RaceStart Date: MM/DD/YYYYEnd Date: MM/DD/YYYY

Run ReportReset Filters

Report: Which colleges have students favorited (♥)?

Filters Selected:

Actions: [Print](#) [Download XLSX](#) [Download CSV](#)

Summary

College Name	Number of students that ♥ this College
ABC Adult School	6
Aaniiih Nakoda College	3
Abilene Christian University	1
Abilene Christian University-Undergraduate Online	1
Abraham Baldwin Agricultural College	1
Academy for Jewish Religion-California	3



CALIFORNIA
COLLEGES.edu
DISCOVER. PLAN. LAUNCH.

Leverage Educator Reports

Connect to Coursework:

Support students in **pursuing relevant coursework**, CTE pathways, or dual enrollment based on their interests



Help Students Create Goals :

Support students and **host in-depth reflections** around goal setting



Target Your Programming:

Plan career fairs and other student opportunities with student interests in mind





CALIFORNIA
COLLEGES.edu
DISCOVER. PLAN. LAUNCH.

Pacific Grove Unified School District

- ▶ What strategies and/or resources were utilized to ensure students have the opportunity to take and complete at least one career assessment from the platform?
- ▶ Recommendations for other districts who intend to incorporate/rollout usage of the career exploration tools on CaliforniaColleges.edu



Kent Leatham, College and Career Coordinator
Pacific Grove High School

College & Career Lessons



CALIFORNIA
COLLEGES.*edu*



The State of California's Official
College and Career Planning Platform



CALIFORNIA
COLLEGES.edu
DISCOVER. PLAN. LAUNCH.

Student Self-Guided Lesson Modules

- ▶ Students complete independently or with educator guidance
- ▶ Automatically available to students by grade-level
- ▶ PDFs include all module contents

Educator Dashboard

Track local benchmarks, manage users, and run reports. The features available in this dashboard are contingent on your account permissions.

MANAGE REPORTS

Report Management

MANAGE STUDENT ACCOUNTS

Account Management

Assignments

Eligibility Tools Printouts

RESOURCES

[Lessons](#)

[Resource Hub](#)

[Videos](#)

[Virtual Trainings](#)

[Vocabulary](#)

All Lessons by Grade Level

Below is a complete list of college, career, and financial aid lessons in the recommended sequence by grade level. Click on a Module to download a PDF version and review the lesson content.

Middle School Lessons

[College and Career 6th Grade Module 1: Exploring CaliforniaColleges.edu](#)

• [Intro to CaliforniaColleges.edu](#)

• Interest Profiler

• Exploring Interest Profiler Results

• Self-Advocacy Skills

[College and Career 7th Grade Module 1: Finding Opportunities to Grow](#)



College and Career Lessons: MS

6th	7th	8th
Exploring CaliforniaColleges.edu	Finding Opportunities to Grow	Connecting Careers to the Life Planner
Interest Profiler	Learning & Productivity	
Review Results	Review Results	Connecting Careers to Colleges
	Finding Interests and Skills Beyond the Classroom	Use Academic Planner
	Connect Skills to Careers	

College and Career Lessons: HS

9th	10th	11th	12th
Setting Yourself Up for Success <ul style="list-style-type: none"> Skills Assessment Review Results Review CSU/UC Eligibility Getting to Know Your College Options <ul style="list-style-type: none"> Explore Careers Explore Colleges Use Academic Planner 	Reworking Life and Career Goals <ul style="list-style-type: none"> Review CSU/UC Eligibility Work Values Assessment Review Results Explore Careers Exploring Colleges <ul style="list-style-type: none"> Explore Colleges Use Academic Planner 	Mapping Out Careers <ul style="list-style-type: none"> Review Interest Profiler, Skills, and Work Values Assessments Results Explore Top Careers Preparing for College: Part 1 <ul style="list-style-type: none"> Review CSU/UC Eligibility Explore Colleges Use Academic Planner 	Preparing for College: Part 2 <ul style="list-style-type: none"> Review CSU/UC Eligibility Finalize College List Apply for College <ul style="list-style-type: none"> College Portals and Admission Tasks Transition to College



CALIFORNIA
COLLEGES.edu
DISCOVER PLAN LAUNCH

Educator-Led Lesson Guides and Worksheets

- ▶ Sample educator-led lessons and activities
- ▶ For grades 6-12
- ▶ Makes use of the career, college, and financial aid tools
- ▶ Fillable PDFs



RESOURCEhub

Resources ▾ Help Tutorials Digital Resources News English ▾

Partner Student Accounts

Basic Student Accounts

Partner Educator Accounts

Basic Educator Accounts

Parent Accounts

General Community Members

Resources for Educators with Partner Accounts

On this page, you'll find information and resources specific to you as an educator with a Partner Account.

Educator-Led Lesson Guides and Worksheets

Educator Guides, paired with Student Worksheets, are sample educator-led lessons and activities for grades 6-12 that make use of the career, college, and financial aid tools on CaliforniaColleges.edu. To access the Educator Guides and Student Worksheets, simply click on the dark blue bars below for the type of resource you're looking for. This will expand each section and allow you to see the different guides and worksheets available. Clicking on the "Download" button will automatically download the Educator Guide or Student Worksheet.

Grade 6	+
Grade 7	+
Grade 8	+
Grade 9	+
Grade 10	+
Grade 11	+
Grade 12	+



Educator Guides: MS

6th	7th	8th
Welcome to CaliforniaColleges.edu	My First College List	Learning & Productivity
Interest Profiler	Finding Meaningful Experiences & Activities	Family Lesson: My Aspirations
College 101	College Research	Growth Mindset
	College Presentation	Planning Courses for High School
	Introduction to SMART Goals	Reflection & Goal Setting



Educator Guides: HS

9th	10th	11th	12th
Success School Self	Resources for Finding a Career: Intelligences	Researching Postsecondary Options	Solidifying the College List
Task & Time Management	Career Research Project: Career Research	Family Lesson: Resiliency	College Essays
Career Investigation: Interest Profiler	Career Research Project: College Research	Who Are You?: Personality	Planning for California Community College Bound Students
Revised High School Plan	Career Research Project: Conclusion	Family Lesson: Home After High School	Planning for 4-Year Bound Students
Reflection & Annual SMART Goal	Reflection & Goal Setting	Writing Your Best Resume	Reflection & Goal Setting
Family Lesson: My School's Resources		Reflection & Goal Setting	



CALIFORNIA
COLLEGES.edu
DISCOVER. PLAN. LAUNCH.

Connection Reflection

Find a new partner who you haven't spoken with yet today.

Take four minutes to discuss the following question:

- ▶ How have you used/would like to use CaliforniaColleges.edu to create Tier 1 college and career exploration experiences for students?





Connection Reflection

Find someone who you haven't spoken with yet today. Take four minutes to discuss the following question:

- ▶ How have you used/would like to use CaliforniaColleges.edu to create Tier 1 college and career exploration experiences for students?



College Application Launch



CALIFORNIA
COLLEGES.*edu*



The State of California's Official
College and Career Planning Platform



College and Financial Aid Launches

2024-2025- In-Progress Data

DISCLAIMER

Data is accurate as of Feb. 10, 2025.

CCGI shares data from CaliforniaColleges.edu for informational purposes only. It is not to be redistributed beyond the recipient Local Educational Agency (LEA). Due to the nature of transmission across multiple information systems, there may be delays resulting in up to a 5% margin of error compared to local systems. Please [Contact Us](#) if you have any questions.



Celebrations!

- ▶ **1,920** unique students launched or submitted to **UC**
 - **7,307** applications launched or submitted
- ▶ **2,140** unique students launched or submitted to **CSU**
 - **9,094** applications launched or submitted
- ▶ **3,279** unique students launched or submitted to **CCC***
 - **3,444** applications launched or submitted
- ▶ **566** unique students launched or submitted to **FAFSA/CADAA***

*Applications still in progress



Connection Reflection

Find someone you don't know with the same color top as you to be your partner. Take four minutes to introduce yourselves and discuss the following questions:

- ▶ How did your team use CaliforniaColleges.edu **college application tools** and/or **educator reports** this fall?
- ▶ While using CaliforniaColleges.edu college application tools and educator reports:
 - What **successes** did your team have?
 - What **challenges** did your team have?





Study: Eligibility and Application Report

The Eligibility and Application Report can be leveraged in different ways during the school year to identify strategic supports.

During CSU/UC Application Window

- ▶ Identify CSU and UC eligible students who have not yet completed a CSU or UC application.

After CSU/UC Application Window

- ▶ Identify students who have not yet completed an application to any college
- ▶ Identify college applicants to have not yet applied to FAFSA/CADAA

After College/Financial Aid Application Window

- ▶ Review college application data to identify best practices and challenges for next application window.



All-in-one Application Report

Download Only: Current
College Eligibility and
Application Statuses (CSV)

- ▶ By student
- ▶ CSU and UC Eligibility
- ▶ Status of CCC, CSU,
and UC Applications
- ▶ Status of Financial Aid
Applications

Formatted Eligibility Report io						
Student Name	CSU GPA	CSU Eligibility (CMP)	Completed CSU Applications	In-progress CSU Applications	FAFSA/CADAA Status	
Demo 1	4	On Target	California State University-Fresno; California State University-Long Beach; San Jose State University; California State University-San Marcos	California Polytechnic State University-San Luis Obispo; California State University-Bakersfield; California State University-Stanislaus; California State University-San Bernardino; California State Polytechnic University-Pomona; California State University-Chico; California State University-Dominguez Hills; California State University-Fresno; California State University-Fullerton	Launched	
Demo 2	3.86	On Target	California State University-Fullerton; California State University-Long Beach; California State University-Northridge; San Diego State University; California State University-Monterey Bay	California State University-Northridge; California State University-Sacramento; California State University-Maritime Academy; California State University-San Marcos	Launched	
Demo 3	2.5	Off Target deficient subjects		Bakersfield; California State Polytechnic University-Humboldt	Launched	
Demo 4	3.92	Off Target deficient subjects		California State University-Bakersfield	Launched	
Demo 5	4.04	On Target		California State University-Bakersfield	Launched	
Demo 6	4.05	On Target			Launched	
Demo 7	4.09	On Target		California State University-Bakersfield; California State University-Stanislaus; California State University-Chico; California State University-Fresno	Launched	
Demo 8	4.13	Off Target deficient years and subjects			Launched	
Demo 9	4.04	On Target			Launched	
Demo 10	4.04	On Target			Launched	
Demo 11	4.18	Off Target deficient subjects			Launched	
Demo 12	4.04	On Target		California State University-Fresno	Launched	
Demo 13	4.04	Off Target deficient subjects			Launched	
Demo 14	4.13	On Target			Launched	
Demo 15	4.05	Off Target deficient subjects		Bakersfield; California State University-Bakersfield	Launched	

Pulling Data: College Applicants

Using the self-guide, let's take ten minutes to pull your own student data.

- Identify students who have not yet completed an application to any college

Guided Exploration- College Eligibility and Application Status Educator Reports
Reflection & Next Steps

Instructions
Follow the instructions on pages 2-3 to practice navigating the college application status reports and to analyze your data.

As you practice pulling Educator Reports, add your totals to the table below to inform your reflection:

	CSU Eligible*	UC Eligible*	Submitted CSU Applications*	Submitted UC Applications*	Submitted CCC Applications*	No College Applications Launched
Total Number of Students						

*eligibility status dependent on CHP alignment
*application status based on applications launched through CaliforniaColleges.edu or matched students

After pulling the data, reflect using the questions below:

What strategies were successful during this application window?	
What challenges arose during this application window?	
Reviewing the data, what opportunities do you have for future next steps?	





Connection Reflection

Find a new partner who you haven't spoken with yet today.

Take five minutes to discuss the following question:

- ▶ Based on your review of data, what are your **next steps** for using CaliforniaColleges.edu college and financial aid application tools and educator reports this spring and next fall?
- ▶ What opportunities do you have to embed these tools into your Tier 1 supports strategically?



CMP Alignment & Maintenance



CALIFORNIA
COLLEGES *.edu*

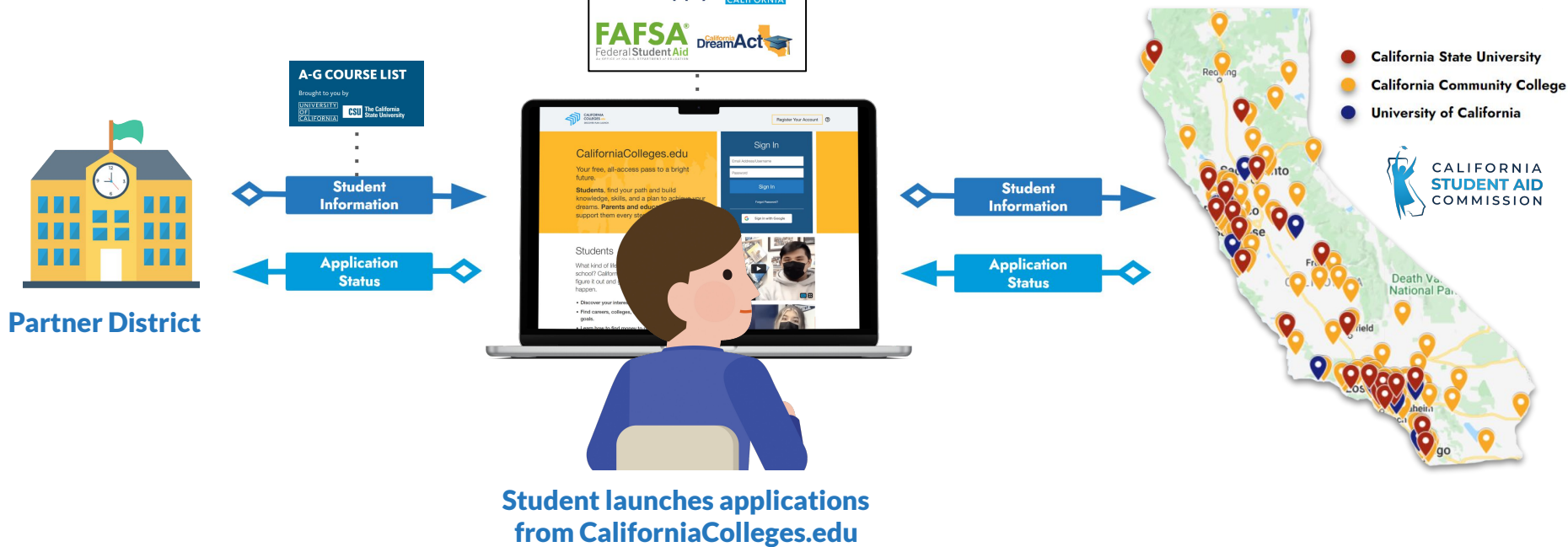


The State of California's Official
College and Career Planning Platform



CALIFORNIA
COLLEGES.edu
DISCOVER. PLAN. LAUNCH.

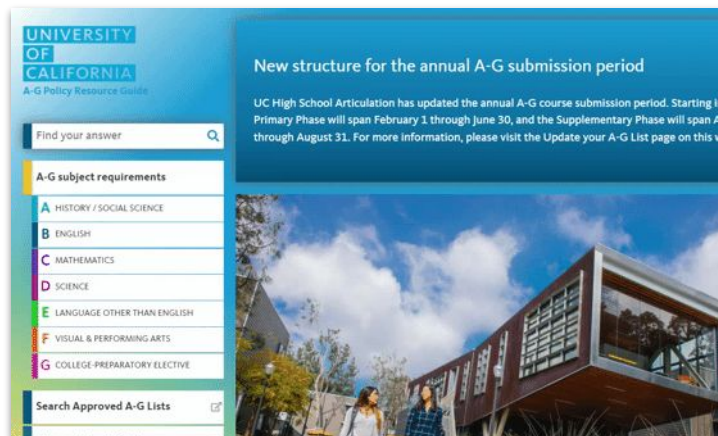
Connecting California's Systems



The Course Management Portal

The Course Management Portal (CMP) is where all California districts and/or their schools manage their public-facing “A-G Course List.”

- ▶ The portal is managed by the University of California Office of the President (UCOP).
- ▶ Every institution that serves high school students in California needs to submit courses to the [Course Management Portal \(CMP\)](#) for review and approval by UC, if that course is to appear on the school’s A-G Course List.
- ▶ CMP course data serves as the “source of truth” for CSU and UC admissions processes.



Visit the CMP Website

<https://hs-articulation.ucop.edu/agcmp#/login>

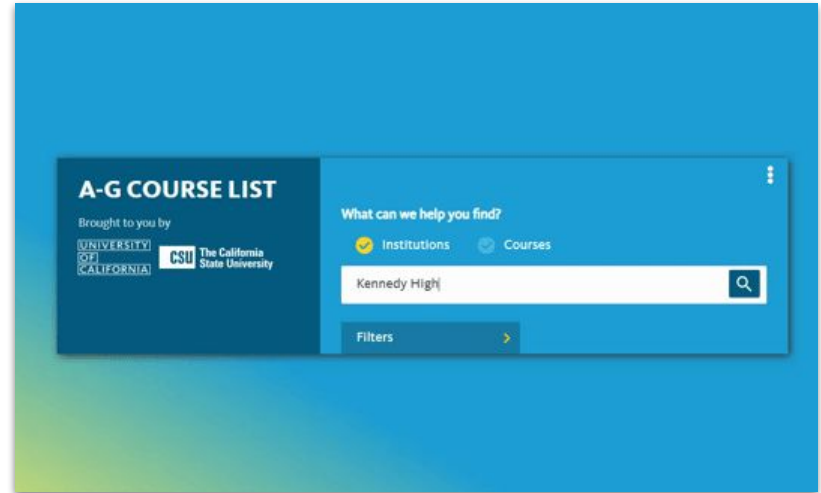


CALIFORNIA
COLLEGES.edu
DISCOVER. PLAN. LAUNCH.

“a-g” Alignment Support

CaliforniaColleges.edu matches the course grade records provided by school districts against the Course Management Portal (CMP).

- ▶ The CMP course list is what determines which courses fulfill an “a-g” subject area.
- ▶ CaliforniaColleges.edu uses the official CMP course list for each school to verify the transcript data shared by district.
- ▶ CaliforniaColleges.edu helps educators identify and resolve issues with their CMP list that may impact eligibility for students:
 - CDS Code, Academic Year, A-G Subject Area, Transcript Abbreviation, Local Course Code





CALIFORNIA
COLLEGES.edu
DISCOVER. PLAN. LAUNCH.

The CSU and UC Eligibility Tools





What is A-G Misalignment?

A-G mismatch occurs when the way a course is listed in a district's Student Information System (SIS) doesn't align with the way it is listed in the CMP.



CAL STATE APPLY
UNIVERSITY
OF
CALIFORNIA





What About Dual Enrollment?

- ▶ Dual Enrollment is a method that students can use to meet A-G requirements, but these courses cannot be verified against the CMP.
- ▶ DE will surface in Yellow as “Requires Review” to indicate to the student that **action is required** in their CSU and UC applications.
- ▶ It is by design that DE courses cannot be imported into the high school coursework section of Cal State Apply and the UC Application.
 - College courses must be entered into the College sections of both applications, which are programmed to recognize one semester of College coursework as fulfilling a full year of A-G.

Not a verified "a-g" course		Course listed as "a-g" by school, but not found in UC CMP database	
Additional Coursework Unmatched "a-g" Courses Other High School Graduation Requirements Community College Preparatory Courses CTE Pathways Courses		Health Ed S1 2020-21 Completed	A+
		ENGL-1A Reading & Composition S1 2023-24 Completed	A
		*PE 1 S2 2020-21 Completed	A+



New Ed Code (Summer 2024)

The following subsections of code is a **policy anchor** which establish **CaliforniaColleges.edu** as the **future state infrastructure** for the work outlined below:

California Education Code 48800(c)

*A pupil shall receive credit for community college courses that the pupil completes at the level determined appropriate by the governing boards of the school district and community college district. Using available funding apportioned to the community college district pursuant to Section 84750.4, the governing board of the community college district shall report the pupil's completed courses and grades received through eTranscript California, also referred to as "eTranscriptCA," for purposes of enabling the uniform integration of the pupil's completed courses and grades received into the pupil's universal and electronic high school transcript that is housed on the **CaliforniaColleges.edu** platform.*

The implementation timeline for the code section above are not yet determined, but the opportunity and intent is clear.



CALIFORNIA
COLLEGES.edu
DISCOVER. PLAN. LAUNCH.

CMP Submission Deadlines

Submission Period	Dates	Course Types
Primary Phase	February 1 - June 30	All Course Types
Course Management Month	July 1 - July 31	Only Courses Eligible for Auto Approval
Supplementary Phase	August 1 - August 31	All Course Types
Course list edits such as updates to transcript abbreviations, local course codes or the course learning environment may be made at any time of the year. https://hs-articulation.ucop.edu/guide/update-your-a-g-list/a-g-course-submission-deadlines/		

What A-G Misalignment Looks Like

CMP Misalignment inhibits successful electronic data transmission and may prevent CSU and UC campuses from recognizing A-G approved coursework.



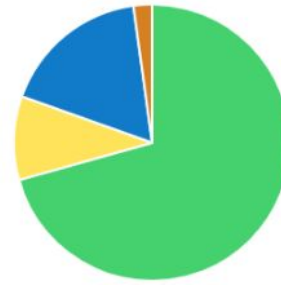
In SIS	In CMP
Transcript Abbreviation: Wrld Hist Local Course Code: 30125	Transcript Abbreviation: World History Local Course Code: [None Listed]
Transcript Abbreviations: Algebra 2A and Algebra 2B Local Course Codes: 100451 and 100452	Transcript Abbreviation: Algebra II Local Course Code: 1004
Transcript Abbreviation: English II Local Course Code: 4538ENGL	Transcript Abbreviation: English II/4538ENGL Local Course Code: [None Listed]



CMP Mismatch

Which district courses are flagged “a-g” BUT do not match against CMP?

- ▶ Organized by course and number of impacted students
- ▶ Prioritize CMP clean-up
- ▶ Identify impacted students



- "a-g" flagged courses taken in the district that were matched successfully to CMP: 65
- "a-g" flagged courses taken in the district that were not matched successfully to CMP: 9
- "a-g" flagged courses taken outside the district that were matched successfully to CMP: 16
- "a-g" flagged courses taken outside the district that were not matched successfully to CMP: 2

(Enrolled) District	(Enrolled) School	(Course) School	(Course) Academic Year	(Course) Subject Area	(Course) Transcript Abbreviation	(Course) Local Course ID	(Course) Number of Students Impacted
Demonstration Only Unified	Demo Partner High	Demo Partner High	2021-22	E	Heritage Spanish II	1111	
Demonstration Only Unified	Demo Partner High	Demo Partner High	2021-22	B	Basic English Lit III		
Demonstration Only Unified	Demo Partner High	Demo Partner High	2018-19	C	Algebra I-1	3331	
Demonstration Only Unified	Demo Partner High	Demo Partner High	2018-19	C	Algebra I-2	3332	1
Demonstration	Demo Partner	Demo Partner					





Running CMP Mismatch Report

How to Run an In-District "a-g" Misalignment Report

To ensure your students are able to navigate **Cal State Apply** or **UC Application** for admission to a CSU or UC, you need to be able to **easily find issues with their eligibility** that could affect their admission.

CaliforniaColleges.edu's "a-g" **Course Mismatch Reports** help educators with **Partner Accounts** identify **in-district courses** that are misaligned with the Course Management Portal (CMP), which can adversely impact a student's CSU or UC eligibility.

1 / 17

In this tutorial, we'll go over how to run a report to see courses in your district are misaligned with the Course Management Portal (CMP).

[Read the screen](#) for more information.

Click the [right arrow below the tutorial](#) to advance to the next slide.

© 2023 - 2024 California College Guidance Initiative



CALIFORNIA
COLLEGES.edu
DISCOVER. PLAN. LAUNCH.

Data Services & Technical Assistance

CCGI has team members dedicated to serving the Central California region:

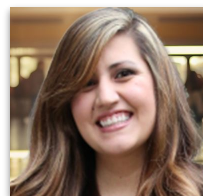
Our **Data Services** and **Technical Assistance** teams help districts bring their data files to CaliforniaColleges.edu and support CMP alignment.



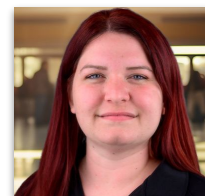
Maria Cavallaro
District Data
Support Analyst



Ryan Cameron
District Data
Support Analyst



Amy Martinez
Technical Assistance
Manager



Paige Getty
Technical Assistance
Manager

californiacolleges.edu/#/contact-us





CALIFORNIA
COLLEGES.edu
DISCOVER. PLAN. LAUNCH.

South Monterey County Joint Union High School District

- ▶ District's journey from understanding your role as POC/CMP Manager and its direct relation to CMP alignment
- ▶ District practices to create and maintain CMP alignment
- ▶ What processes/systems changed to increase CMP alignment?



Yvette Adams, Director of Student Services
South Monterey County Joint Union High School District



Connection Reflection

Find someone who is of the same (or similar) height as you who is not from your district.

Take four minutes to discuss the following question:

- ▶ What practices does your site/district have in place to maintain CMP alignment?



Next Steps



CALIFORNIA
COLLEGES *.edu*

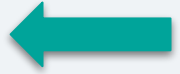


The State of California's Official
College and Career Planning Platform



Financial Aid Application Launch

- ▶ Navigate to the **Financial Aid** tab
- ▶ Select **Launch FAFSA or CADAA** from California Colleges.edu



Financial Aid Options

Learn about Financial Aid
Federal and State Aid
Scholarships
Work Study
Student Loans

Your Financial Aid Eligibility

Net Price Calculator
Financial Aid for Foster Youth
Financial Aid for Undocumented Students
Financial Aid for Transfer Students
Financial Aid for Community College Students

Apply For Financial Aid

Launch FAFSA or CADAA from CaliforniaColleges.edu

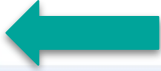
Financial Aid Checklist

Other Applications

FAFSA
CA Dream Act
CSS Profile
Cal Grant
Chafee Grant for Foster Youth
California College Promise Grant

After You Apply

Post-Application Checklist
Compare Your Financial Aid Offers



Financial aid

Financial Aid Application Launch

- ▶ Click the **Launch FAFSA/CADAA** button
- ▶ Select **Launch FAFSA or CADAA** from California Colleges.edu

My Plan

Preparing for life after high school starts now. Use My Plan to organize your thoughts, track steps, and develop a clear plan for the future.

Lessons Academic Planner Life Planner My Career Plan My College Plan My Goals My Journal My Experiences

College and Career

Financial Aid

Financial Aid Lessons

Deadline is April 2

Launch FAFSA/CADAA

To Do (0)

1	September Complete Prep Work for Your FAFSA or CADAA	N
2	January Launch and Submit the FAFSA or CADAA	N



Financial Aid Application Launch

If a student has *not*
completed Module 1:

- ▶ **Select the application** that is appropriate
- ▶ **Click Launch** to be taken to the corresponding application website



Financial Aid Educator Reports

- ▶ What is the status of FAFSA/California Dream Act Application launched from California Colleges.edu?
- ▶ What are students' current financial aid application and module completion statuses?



Summary

The California Student Aid Commission (CSAC) provides [CaliforniaColleges.edu](https://californiacolleges.edu) with a FAFSA/CADAA status if the student launched their application from CaliforniaColleges.edu and their account includes SSID. CSAC last provided this information on 07/09/2024.

- **Not Launched:** These students have not launched their FAFSA/CADAA applications from [CaliforniaColleges.edu](https://californiacolleges.edu).
- **Launched:** These students have launched their FAFSA/CADAA from [CaliforniaColleges.edu](https://californiacolleges.edu), but the submission is unverified because the student did not complete their application OR we have not received an update from CSAC.
- **Submitted:** These students have launched their FAFSA/CADAA from [CaliforniaColleges.edu](https://californiacolleges.edu) and CSAC says the application is being processed OR may be incomplete. If incomplete, the student will receive an email from the Department of Education asking them to make corrections. Also, if incomplete, the student's Student Aid Report (SAR) will not include a Student Aid Index (SAI) and will indicate unresolved issues.
- **Completed:** These students have launched their FAFSA/CADAA from [CaliforniaColleges.edu](https://californiacolleges.edu) and CSAC confirms the application is complete. A completed application has a calculated Student Aid Index (SAI) and can be used to determine Cal Grant eligibility if the GPA is matched.

	Number of Students
Seniors who have Not Launched a FAFSA/CADAA	67
Seniors who Launched a FAFSA/CADAA	32
Seniors who Submitted a FAFSA/CADAA	0
Seniors who Completed a FAFSA/CADAA	0
Unregistered	0

Additional Resources



CALIFORNIA
COLLEGES *.edu*



The State of California's Official
College and Career Planning Platform



Resource Hub

Statewide Webinars

Join us for **webinars** to learn about the tools and resources on CaliforniaColleges.edu



Tutorials

Use **student and educator tutorials** to learn how to use CaliforniaColleges.edu tools



Educator Guides

Explore **sample educator-led lessons and activities** for grades 6-12 that make use of the career, college, and financial aid tools on CaliforniaColleges.edu



RESOURCEhub

Resources ▾ Help Tutorials Digital Resources News English ▾

Welcome to the CaliforniaColleges.edu Resource Hub

Looking to better understand how to navigate and use the tools on CaliforniaColleges.edu? You've come to the right place. Here, you can find resources such as interactive tutorials, videos, answers to FAQs, and media toolkits to help you better understand, talk about, and navigate the platform.

Find the Right Resources For You

First, select the **Type of Person** that best describes you. Then, type in **your school district's name** in the search bar below and click **Submit**. You will be redirected to a page with information that is most relevant to you.

→

Fields marked with an * are required

Type of person *

- ☐ Student
- ☐ Parent
- ☐ Educator
- ☐ Community Member

Select School District *

Choose School District

SUBMIT

www.californiacolleges.edu/resourcehub



Live Webinars Are Available



Webinars For Educators

Learn about the tools and resources on CaliforniaColleges.edu.



CaliforniaColleges.edu Statewide Live Webinars

Join us for the following webinars to learn about the tools and resources on CaliforniaColleges.edu! Expand each section below to view the webinars offered on each topic.

These sessions are intended to:

- Provide **foundational knowledge** about each component of the platform in a **convenient virtual format**.
- Provide **high-level live support** with real-time facilitators.

The ideal audience for these webinars:

- Counselors
- Site and District Administrators
- Educators or staff overseeing and supporting college and career readiness

Interested in tailored support for your district? CCGI also offers district-specific training sessions for groups with customized content aligned to your district's implementation needs. Please reach out to your CCGI point of contact if you are interested in scheduling training for your district.



Live Webinars: CaliforniaColleges.edu Overview



Live Webinars: College and Financial Aid Application Tools (**Partner Districts**)



Live Webinars: College and Financial Aid Applications Refresher (**Partner Districts**)



Scan the QR Code to view the webinar schedule or visit
californiacolleges.edu/resourcehub/statewide-live-webinars/



CALIFORNIA
COLLEGES.edu
DISCOVER. PLAN. LAUNCH.

Need Help? Contact Us

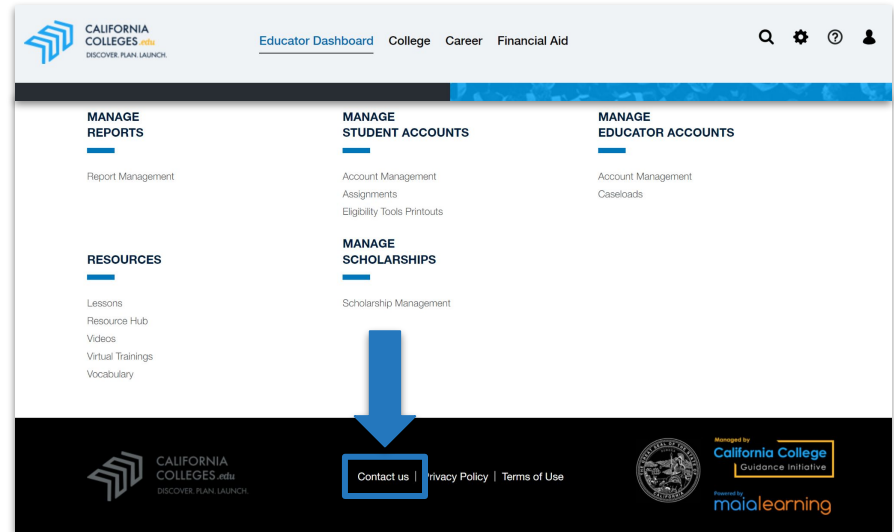
There are multiple ways to contact us when you have questions or need support:

1

Click the “Contact Us” link at the bottom of every page on the platform.

2

Visit californiacolleges.edu/#/contact-us or scan the QR code :



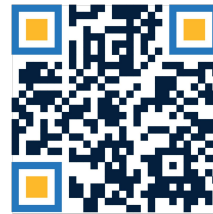
Questions?



CALIFORNIA
COLLEGES *.edu*



The State of California's Official
College and Career Planning Platform



Please complete our survey by
scanning the QR Code or visiting:

<https://qr.link/CjWMPe>



CALIFORNIA
COLLEGES.edu
DISCOVER. PLAN. LAUNCH.

Thank You!