

Overview of CaliforniaColleges.edu

California State University, Channel Islands

October 21, 2024



CALIFORNIA
COLLEGES.edu



The Official College & Career Planning
Platform of the State of California



CALIFORNIA
COLLEGES.edu
DISCOVER. PLAN. LAUNCH.

CCGI Introductions

Meet Your Engagement and Implementation Team

Serving Ventura, Los Angeles, & Orange Counties



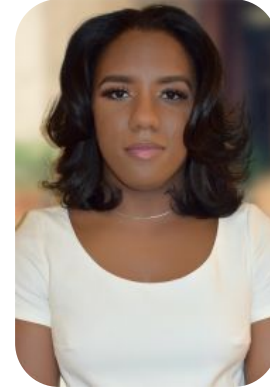
Tamai Johnson
Director



Joanna Vazquez Zelaya
Deputy Director



Doris Lee
Senior Manager



Dedreiana Elliott
Senior Manager



Monique Bell
Training Manager



CALIFORNIA
COLLEGES.edu
DISCOVER. PLAN. LAUNCH.

CCGI Introductions

Meet Your Engagement and Implementation Team Serving The Central California Region



Selma Gonzalez
Director,
Engagement and
Implementation



Geraldina Espinoza
Senior Manager,
Engagement &
Implementation



Anna Lorena Garcia
Senior Manager,
Engagement &
Implementation



Ashley Shaffer
Senior Manager,
Training



CALIFORNIA
COLLEGES.edu
DISCOVER. PLAN. LAUNCH.

Agenda

**Overview and Demonstration of
CaliforniaColleges.edu**

Team Exploration & Discussion

Questions & Next Steps

**MAKE YOUR
PLAN**

FOR COLLEGE AND CAREER

APPLY TO THE

116 CCCs 23 CSUs 9 UCs

FAFSA OR CA DREAM ACT

ALL IN ONE PLACE

 CALIFORNIA
COLLEGES.edu
DISCOVER. PLAN. LAUNCH.



Outcomes for Today

1

Explore CaliforniaColleges.edu from a **student** perspective

2

Explore CaliforniaColleges.edu from an **educator** perspective

3

Identify how CaliforniaColleges.edu **aligns with and supports** your college/career readiness work

4

Determine if your district is interested in **partnership**





CALIFORNIA
COLLEGES.edu
DISCOVER. PLAN. LAUNCH.

Reflection

What is your current knowledge of and comfort level with using CaliforniaColleges.edu?





CALIFORNIA
COLLEGES.edu
DISCOVER. PLAN. LAUNCH.

California College Guidance Initiative

Who We Are

- ▶ **Manager of CaliforniaColleges.edu**, the State of California's official college and career planning platform.
- ▶ A **legislatively-designated**, authorized service provider to all California school districts ([California Education Code 60900.5](#)).
- ▶ A crucial component of **California's Cradle-to-Career Data System**, as established by AB 132.

Who We Are Not

- ▶ A vendor.
- ▶ A grant-funded program.



The Tools on CaliforniaColleges.edu



The State of California's official college and career planning platform

We provide students with:



Career Exploration

College and Major Search

CSU and UC Eligibility Tools

Financial Aid Lessons

College and Financial Aid
Application Integrations

We provide educators with:



Data Alignment Support

"a-g" Progress Monitoring

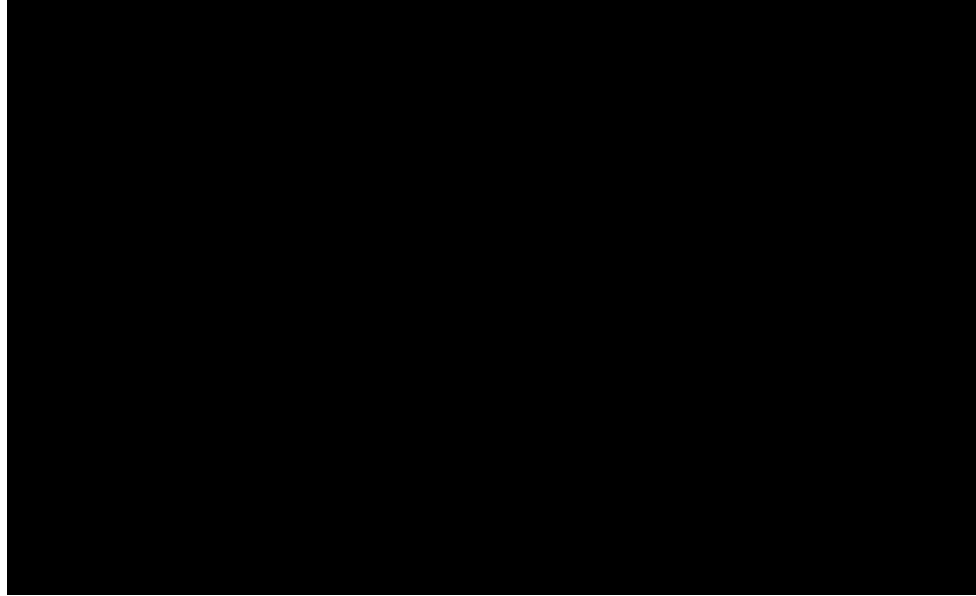
College and Financial Aid
Application Tracking

Reporting Tools
to Support Timely and
Intentional Intervention



CALIFORNIA
COLLEGES.edu
DISCOVER. PLAN. LAUNCH.

A Student's Perspective: Using the Tools on CaliforniaColleges.edu



Jesus Andrade & Katrina Cating
Heritage High School

Questions?



CALIFORNIA
COLLEGES *.edu*



The Official College & Career Planning
Platform of the State of California



CALIFORNIA
COLLEGES.edu
DISCOVER. PLAN. LAUNCH.

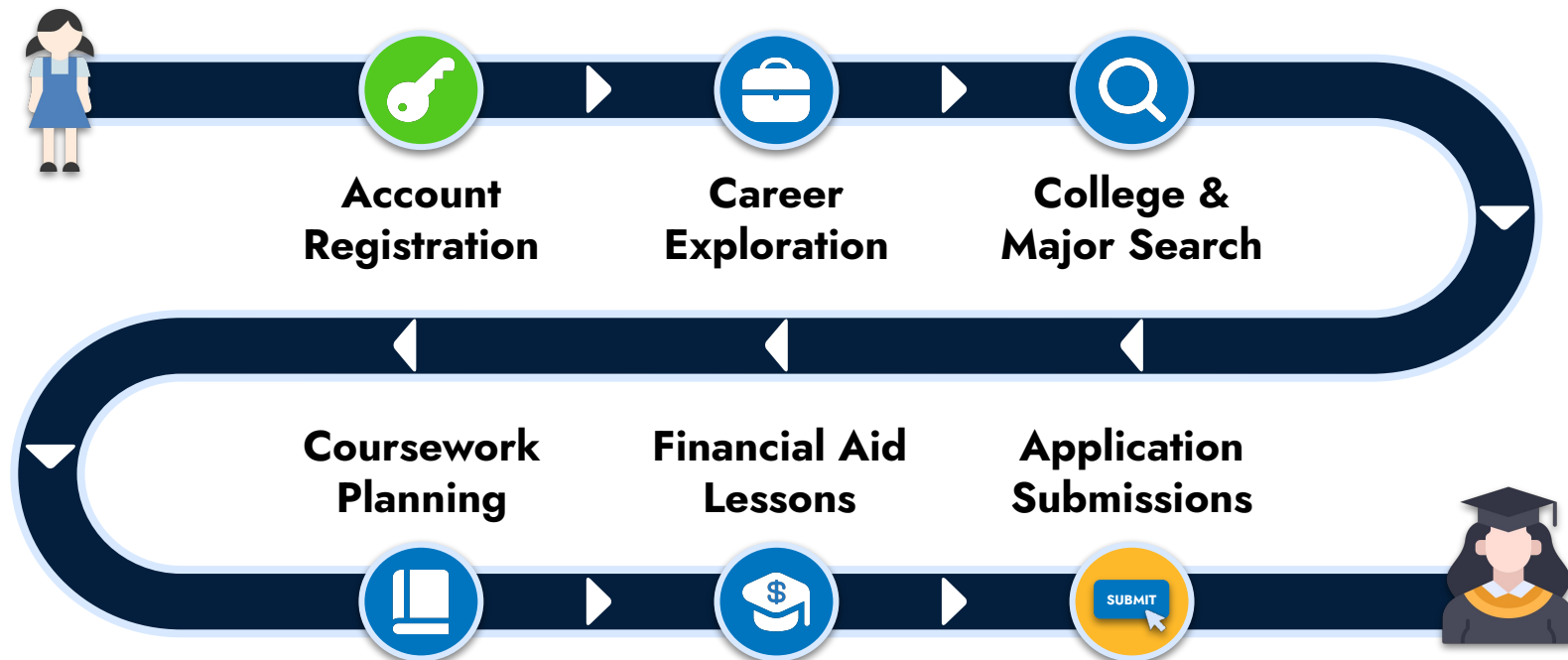
Reflection

**Think of a grade level that
you serve, what is one
college and/or career need
that you are prioritizing?**



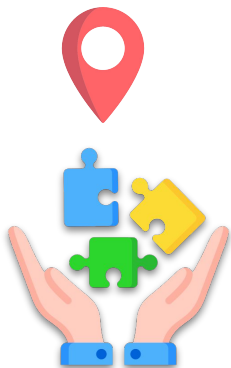
Smoothing the Path for Students

When students are signed in to CaliforniaColleges.edu, educators can track their activities and application progress using built-in reporting tools.

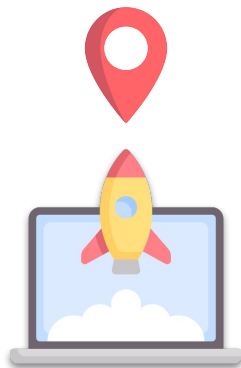


College and Career Lessons: Grades 6-12

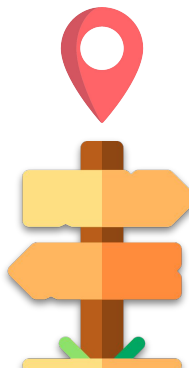
Lessons help students make intentional and informed postsecondary plans.



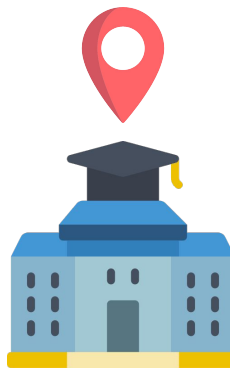
**Personal Values,
Interests, and Skills**



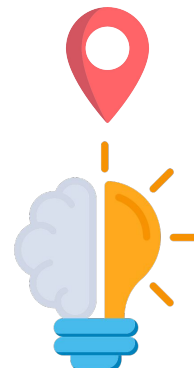
**Career
Exploration**



**Postsecondary
Pathways**



College Eligibility



**Social,
Emotional, and
Personal Needs**



CALIFORNIA
COLLEGES.edu
DISCOVER. PLAN. LAUNCH.

Career Exploration & College Planning Tools

Through CaliforniaColleges.edu, students can access tools that will help them with their college and career planning. These tools include:

Career Assessments



College & Major Search Tools





CALIFORNIA
COLLEGES.edu
DISCOVER. PLAN. LAUNCH.

An Educator's Perspective: District-Wide Implementation of Career Assessments



Edward Kotoian
Hanford Joint Union High School District



CALIFORNIA
COLLEGES.edu
DISCOVER. PLAN. LAUNCH.

Turn and Talk

How would you use the college and career planning tools to support your students?



<<2:00>>



CALIFORNIA
COLLEGES.edu
DISCOVER. PLAN. LAUNCH.

Financial Aid Tools

We provide students with:

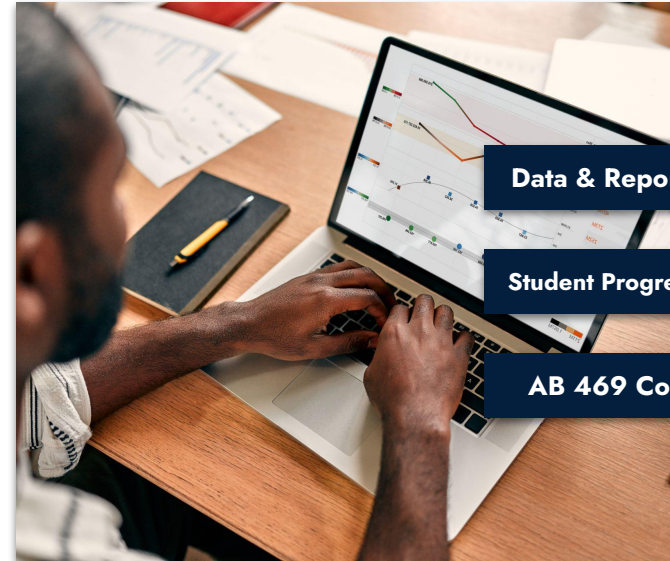


Financial Aid Lessons

Application Launch

Offer Comparison Tool

We provide educators with:



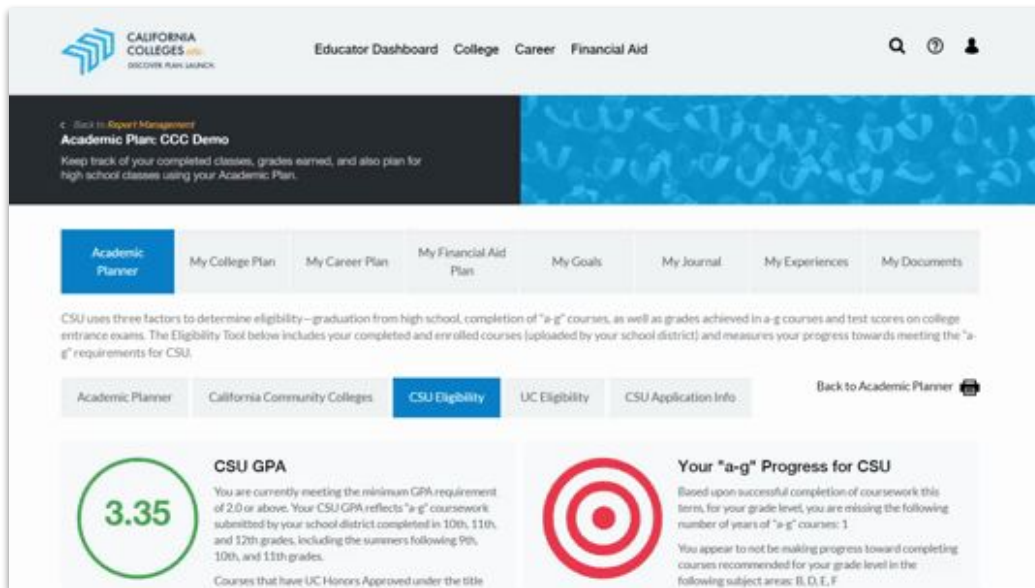
Data & Reporting Tools

Student Progress Tracking

AB 469 Compliance

CSU and UC Eligibility Tools for Students

Students in Partner Districts can use CSU and UC Eligibility Tools to continuously progress monitor their GPA and “a-g” eligibility.



The screenshot displays the Educator Dashboard on the California Colleges.edu website. The top navigation bar includes links for Educator Dashboard, College, Career, and Financial Aid. The main content area is titled "Academic Plan: CCC Demo" and provides instructions on tracking completed classes and planning for high school classes. Below this, a horizontal menu allows users to navigate between various planning tools: Academic Planner (selected), My College Plan, My Career Plan, My Financial Aid Plan, My Goals, My Journal, My Experiences, and My Documents. A paragraph explains that the Eligibility Tool uses three factors to determine eligibility: graduation from high school, completion of "a-g" courses, and college entrance exam scores. Below this, a secondary navigation bar includes links for Academic Planner, California Community Colleges, CSU Eligibility (selected), UC Eligibility, and CSU Application Info, along with a "Back to Academic Planner" button. The main content area is divided into two sections: "CSU GPA" and "Your 'a-g' Progress for CSU". The CSU GPA section shows a current GPA of 3.35, indicating that the user is meeting the minimum requirement of 2.0 or above. The "a-g" Progress section shows that the user is missing 1 year of "a-g" courses and is not making progress toward completing recommended courses in specific subject areas (B, D, E, F).

CSU GPA

You are currently meeting the minimum GPA requirement of 2.0 or above. Your CSU GPA reflects "a-g" coursework submitted by your school district completed in 10th, 11th, and 12th grades, including the summers following 9th, 10th, and 11th grades.

Courses that have UC Honors Approved under the title

Your "a-g" Progress for CSU

Based upon successful completion of coursework this term, for your grade level, you are missing the following number of years of "a-g" courses: 1

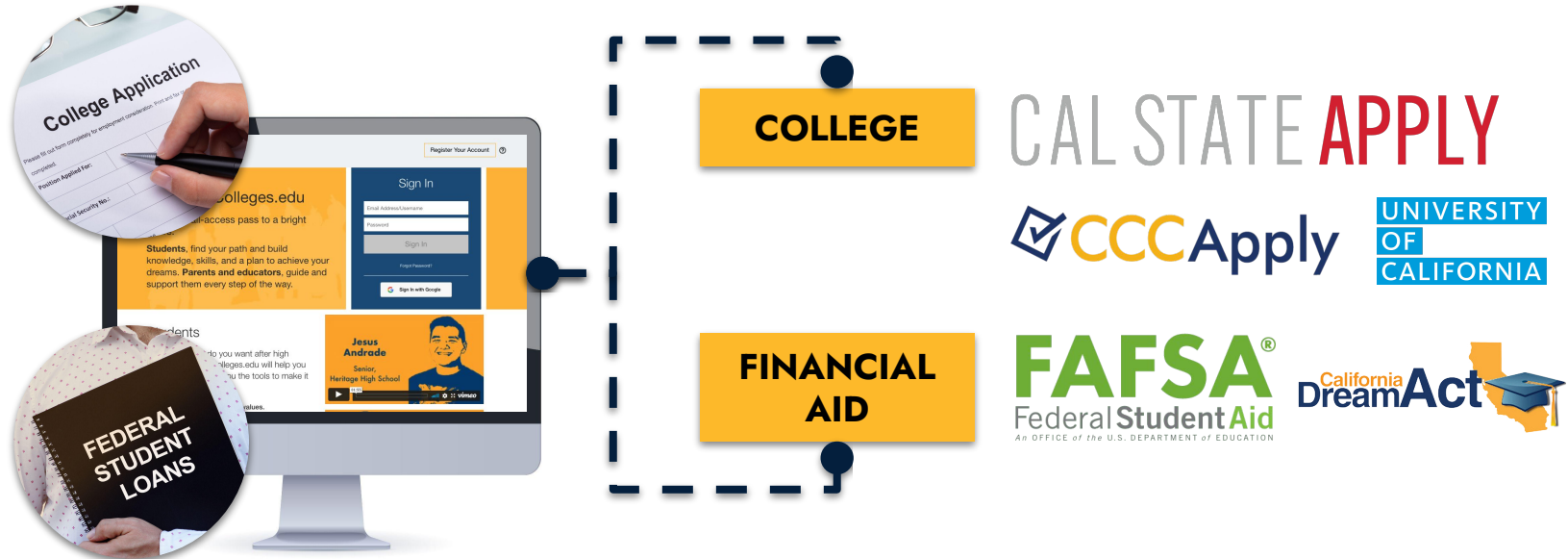
You appear to not be making progress toward completing courses recommended for your grade level in the following subject areas: B, D, E, F



CALIFORNIA
COLLEGES.edu
DISCOVER. PLAN. LAUNCH.

College & Financial Aid Application Integration

When students launch college and financial aid applications directly from CaliforniaColleges.edu, students and educators can track their progress.





CALIFORNIA
COLLEGES.edu
DISCOVER. PLAN. LAUNCH.

An Educator's Perspective: College Application Integrations



Bianca Rodriguez
Madera South High School



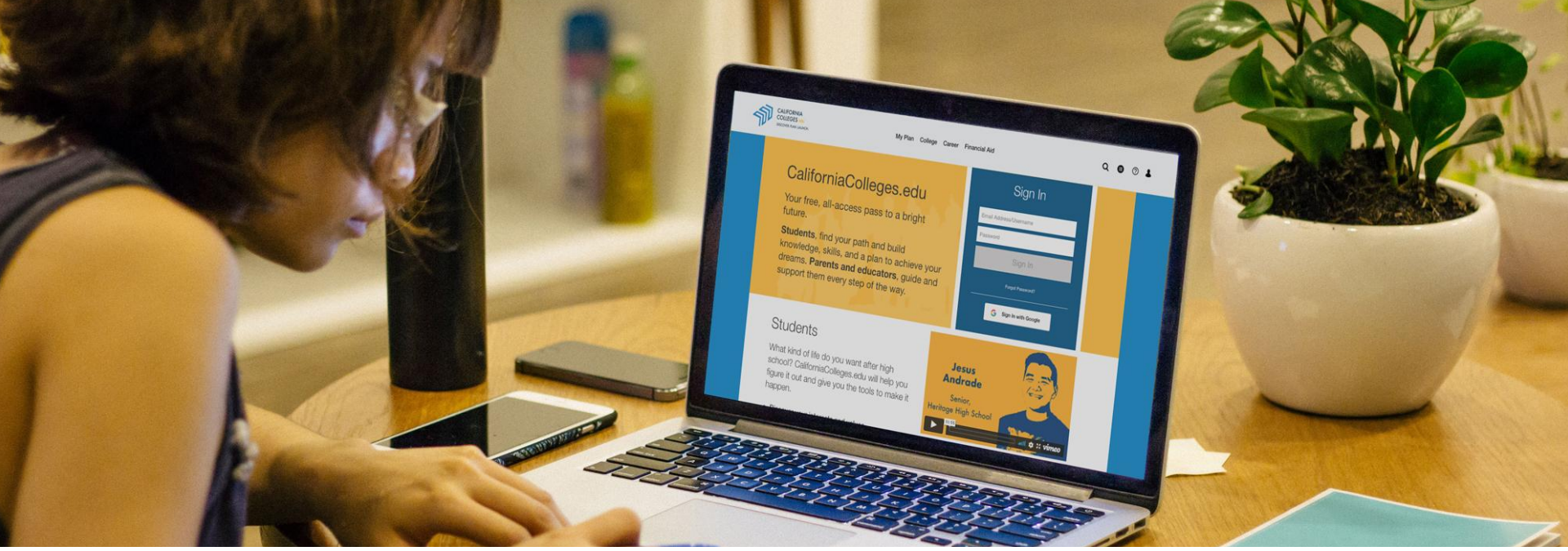
CALIFORNIA
COLLEGES.edu
DISCOVER. PLAN. LAUNCH.

Turn and Talk

**Which of these tools might
you integrate into your
current work with students?**



<<2:00>>



Demonstration of CaliforniaColleges.edu

Questions?



CALIFORNIA
COLLEGES *.edu*



The Official College & Career Planning
Platform of the State of California

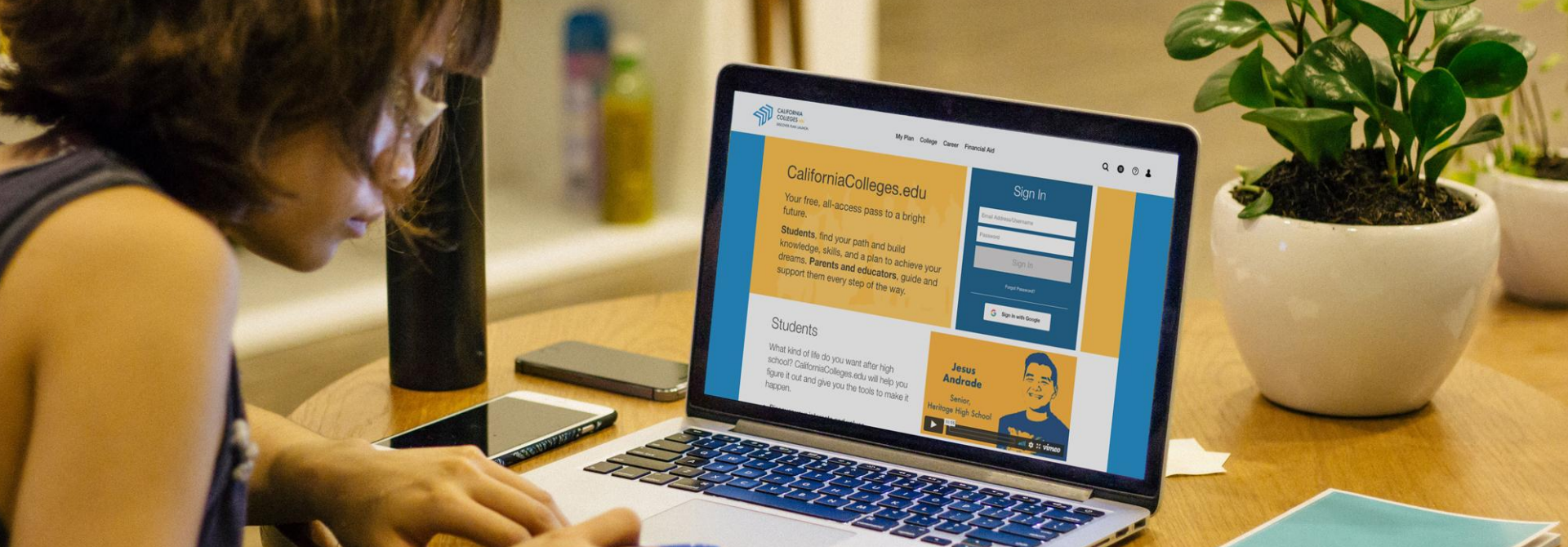


Tools for Educators

Educators in Partner Districts can run reports to monitor student progress on their activities on CaliforniaColleges.edu.

The screenshot shows the 'Manage Reports' interface on the California Colleges.edu website. The header includes the logo, navigation links (Educator Dashboard, College, Career, Financial Aid), and search/user icons. The main content area has a blue banner with the title 'Manage Reports' and a sub-header 'Track your student's college and career readiness by running reports.' Below this is a paragraph explaining the report functionality. The central form allows users to 'Select Report' (currently set to 'Academic'), 'Select Report Type', and 'Select Filters' (including Grade, Course, Section, Gender, Ethnicity, Special Population, and Race). It also includes date pickers for 'Start Date' and 'End Date'. Action buttons for 'Run Report' and 'Reset Filters' are present. At the bottom, it shows the current report filters and available actions: 'Print', 'Download XLSX', and 'Download CSV'.





Demonstration of CaliforniaColleges.edu

Questions?



CALIFORNIA
COLLEGES *.edu*



The Official College & Career Planning
Platform of the State of California

BREAK



CALIFORNIA
COLLEGES.*edu*



The Official College & Career Planning
Platform of the State of California

<<10:00>>



CALIFORNIA
COLLEGES.edu
DISCOVER. PLAN. LAUNCH.

Reflection

<<2:00>>

What are 2 tools that you could add to your counselor toolbelt to meet the college/career readiness need you are prioritizing?





CALIFORNIA
COLLEGES.edu
DISCOVER. PLAN. LAUNCH.

Self-Guided Exploration: The Student Experience



8th Grade Account:

Username:

8b@demo.edu

Password:

Pass12345

12th Grade Account:

Username:

demo12@demo.edu

Password:

Pass12345

Consider

- ▶ How might students in your district utilize these tools?
- ▶ How can these tools fit into your existing counseling and college & career plans?



CALIFORNIA
COLLEGES.edu
DISCOVER. PLAN. LAUNCH.

Educator Resources



Next Steps



CALIFORNIA
COLLEGES *.edu*

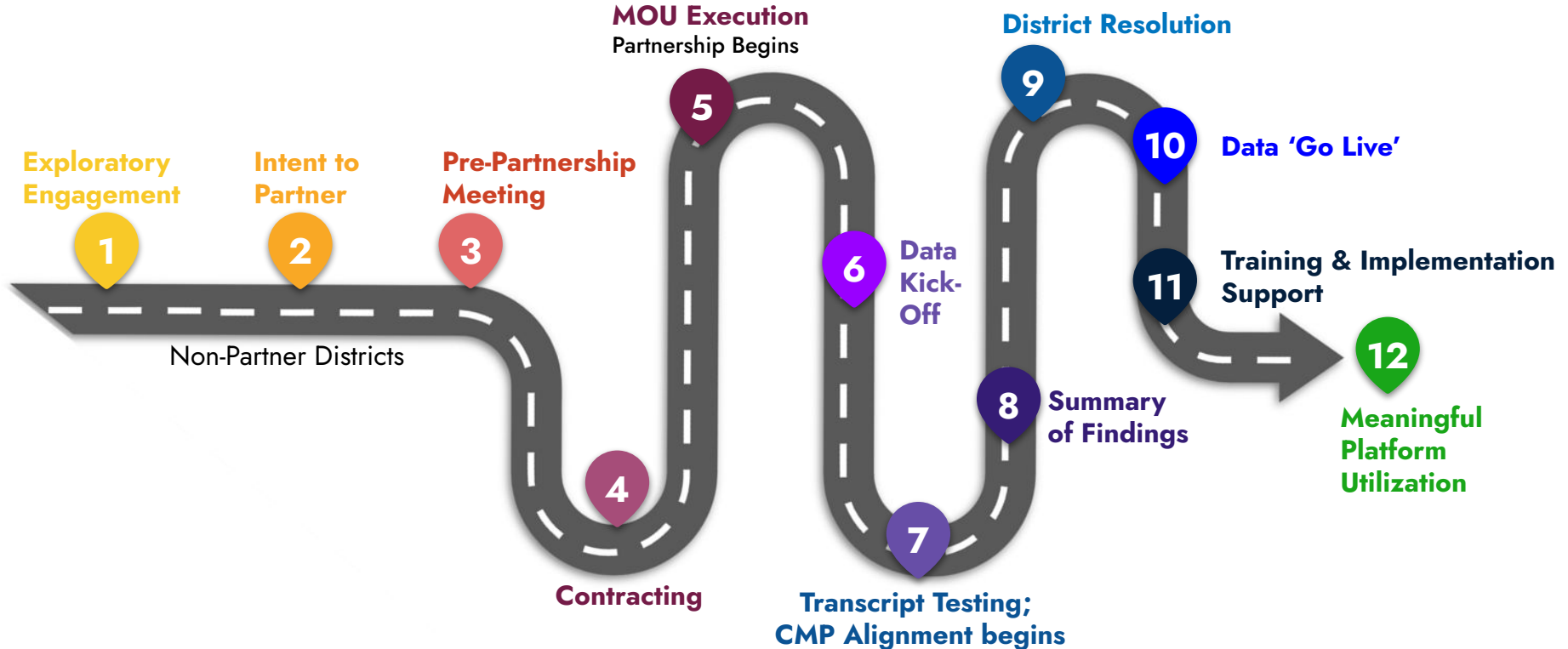


The Official College & Career Planning
Platform of the State of California



CALIFORNIA
COLLEGES.edu
DISCOVER. PLAN. LAUNCH.

District Partnership Roadmap





CALIFORNIA
COLLEGES.edu
DISCOVER. PLAN. LAUNCH.

Considerations

- ▶ How might CaliforniaColleges.edu support your current work with helping students achieve their college and career goals?
- ▶ Non-Partner Districts: Who would you contact to share the benefits both educators and students would receive from using CaliforniaColleges.edu?
 - ▶ District decisionmakers?
 - ▶ Site leads?
 - ▶ Peers?



Next Steps

Non-Partner Districts

1

Educator shares information with site and district level contacts.

2

CCGI and District Leads meet to discuss partnership.

3

District leader submits Intent to Partner Form

Partner Districts

1

Connect internally to understand status of Partnership Roadmap.

2

District leaders to complete action steps to move through Partnership Roadmap.

3

Connect with CCGI Lead for implementation planning and training.



CALIFORNIA
COLLEGES.edu

DISCOVER. PLAN. LAUNCH.

Exit Survey



Thank You!

