

Introducing CaliforniaColleges.edu

Napa Valley Unified School District

10/9/2024



CALIFORNIA
COLLEGES *.edu*



The Official College & Career Planning
Platform of the State of California

California College Guidance Initiative

Who We Are

- ▶ **Manager of CaliforniaColleges.edu**, the State of California's official college and career planning platform.
- ▶ **AB 132 legislatively-designated**, authorized service provider to all California school districts ([California Education Code 60900.5](#)).
 - In addition, to fulfill CCGI's statutory requirements, SB 153 was signed by the Governor.
- ▶ A crucial component of **California's C2C Data System**, as established by AB 132.

Who We Are Not

- ▶ A vendor.
- ▶ A grant-funded program.



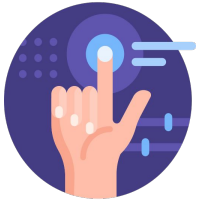
Our Role in Recovery with Equity

CaliforniaColleges.edu is an infrastructure that can help your collaborative make significant progress on four of the Strategies from the Recovery with Equity Report :



Student Retention through Inclusive Support

Free tier one tools and resources to all 6-12 grade students and educators in California. We also partner with school districts to further support data monitoring and targeted student interventions.



High Tech, High Touch Advising

We provide comprehensive, customized sets of lessons and tools for students, actionable reporting for educators, and streamlined intersegmental processes.



College Preparation and Early Credit

We provide “a-g” coursework verification and eligibility tracking for CSU and UC, as well as support implementation of the A-G Completion and Improvement Grants.



College Affordability

We provide lessons and tools to help students understand their financial aid options and submit their FAFSA or California Dream Act Application, as well as support implementation of AB 469 and AB 2015.

What We Do

CaliforniaColleges.edu is free to all public school districts that serve 6th-12th grade students in California.

- ▶ **We provide college and career planning tools** to students and educators through CaliforniaColleges.edu.
- ▶ **We connect California systems**, including integrations with all three public higher education systems (**CCC, CSU, UC**) and the California Student Aid Commission (**CSAC**).
- ▶ **We partner with school districts** to bring high school students' transcript data to CaliforniaColleges.edu.





Partnership with CCGI

Partner Districts have formal data-sharing agreements with CCGI in order to bring their high school transcript data to CaliforniaColleges.edu:

Unique features for Partner Districts include:

- ▶ **“a-g” Alignment Support** for districts to ensure that students get correct “a-g” credit for high school courses and grades in their college applications.
- ▶ **CSU and UC Eligibility Tools** that allow students to see their progress towards meeting the minimum requirements for admission to a CSU and UC.
- ▶ The ability to **import verified transcript data** to their Cal State Apply and UC application.



CALIFORNIA
COLLEGES .edu
DISCOVER. PLAN. LAUNCH.

CCGI Partner Districts

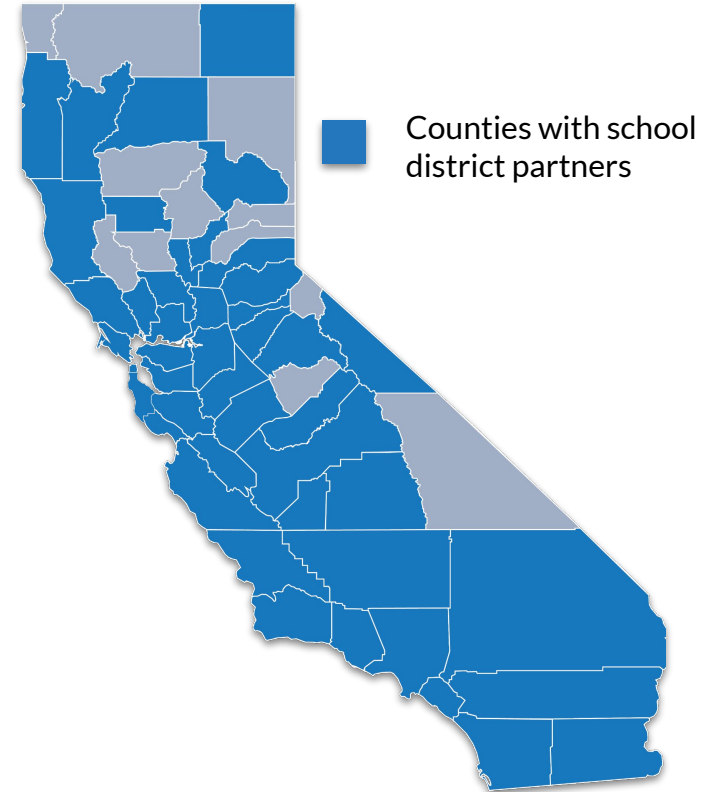
More than 70% of California's high school students are enrolled in a school district that has partnered with CCGI.

Our Partner Districts include more than **250 school districts** and serve more than **1.3 million 9th-12th grade students** in California.

And each year, our Partner list continues to grow!

▼ **See who our Partner Districts are** ▼

californiacolleges.edu/learnmore/partner-districts/



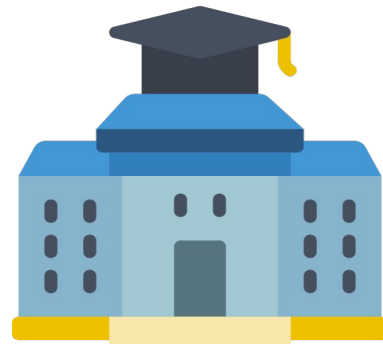
What is CaliforniaColleges.edu?

CaliforniaColleges.edu is the state of California's official college and career planning platform.

Benefits of a CaliforniaColleges.edu account include access to free tools to help students with:



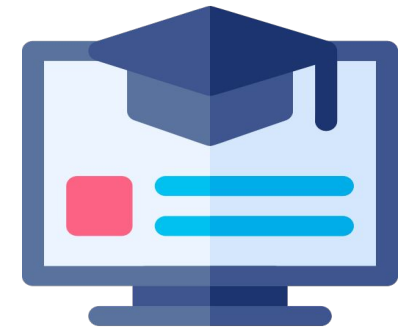
**Career
Planning**



**College
Planning**



**Financia
I
Aid**



**Progress
Tracking**

What Tools are Available on CaliforniaColleges.edu?

CaliforniaColleges.edu provides tools to empower students and educators alike.

| We provide students with:



- ▶ Career exploration tools
- ▶ College and major search tools
- ▶ Financial aid lessons
- ▶ CSU/UC eligibility tools
- ▶ College and financial aid application integration

| We provide educators with:



- ▶ College and career planning tools *in one place*
- ▶ Ability to track student progress and better target interventions
- ▶ Data and reporting tools to help districts comply with regulatory requirements



Student and Educator Tools

Career



- Career Assessments
- Career Search & Favorite
- College & Career Lessons
- Life Planner & Journal
- Student Activity Reports

College



- College & Major Search
- CSU & UC Eligibility
- Application Integrations
- CMP Alignment Support
- Eligibility Reports
- Application Status Reports

Financial Aid

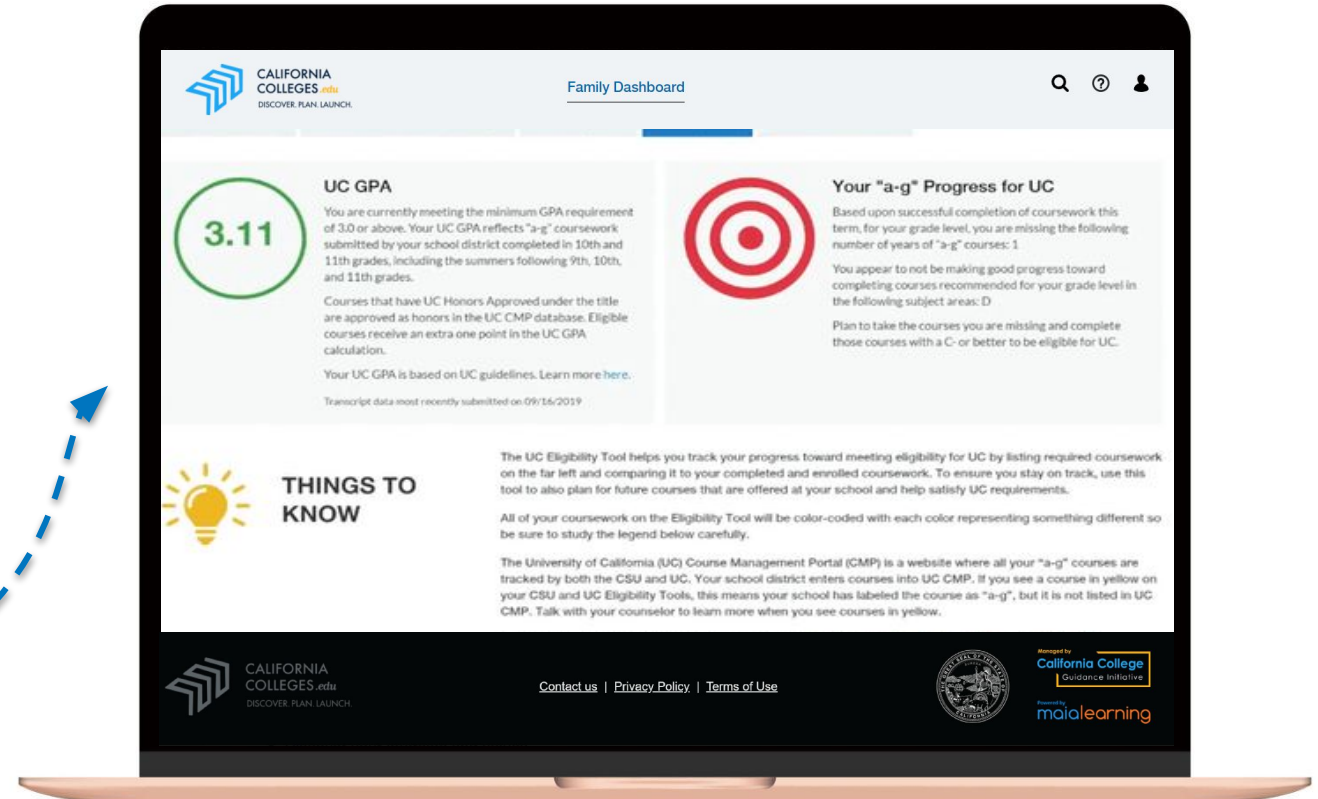


- Financial Aid Lessons
- Application Integrations
- Lesson Progress Reports
- Application Status Reports
- AB 469 Compliance



CSU and UC Eligibility Tools (Students)

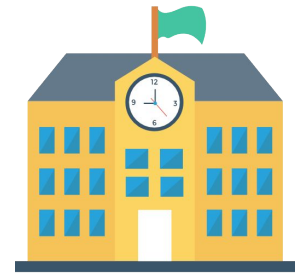
Students in Partner Districts can use CSU and UC Eligibility Tools to quickly track their progress toward meeting “a-g” requirements.



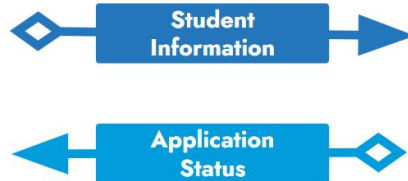


CALIFORNIA COLLEGES.edu
DISCOVER. PLAN. LAUNCH.

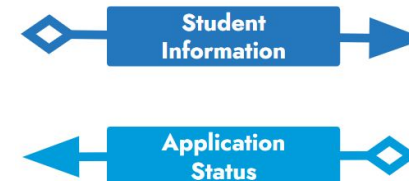
Connecting California's Systems



School District



Student launches applications from CaliforniaColleges.edu

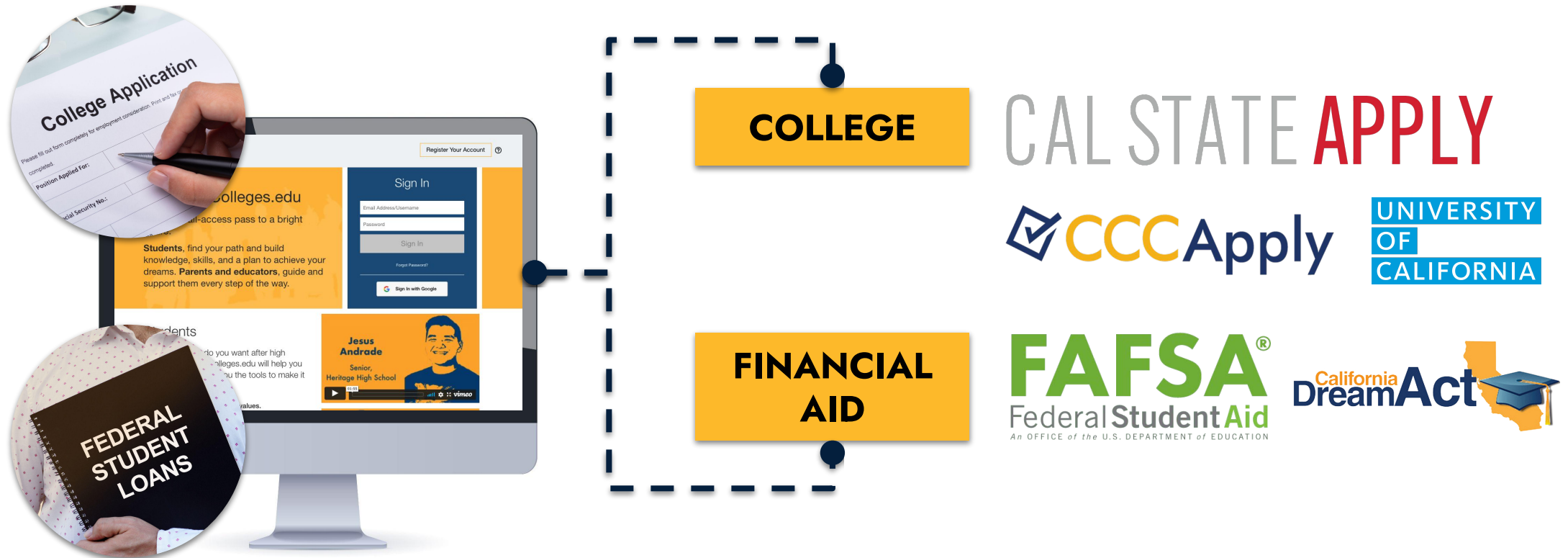


- California State University
- California Community College
- University of California



College and Financial Aid Application Integrations

Students can launch college and financial aid applications directly from CaliforniaColleges.edu and track their progress.





CALIFORNIA
COLLEGES .edu
DISCOVER. PLAN. LAUNCH.

What is CaliforniaColleges.edu?



CALIFORNIA
COLLEGES .edu
DISCOVER. PLAN. LAUNCH

Javier & Yvonne

Student & Educator



Tools for Educators

Educators in partner districts can run reports to monitor student progress on their activities on CaliforniaColleges.edu.





Alignment to District Goals and Priorities

Through strategic implementation, CaliforniaColleges.edu can support with:

- ▶ Expanding career/college exploration and knowledge for all students.
- ▶ Increasing “a-g” completion for high school students.
- ▶ Reducing the burden on students when applying to college through CMP course alignment.
- ▶ Increasing college application support and completion for all students.
- ▶ Increasing CSU and UC application support and completion for CSU/UC-eligible students.
- ▶ Expanding awareness of financial aid and increasing financial aid completion.

How do these align to your site/district goals, priorities or initiatives?

LCAP



SPSA



Reflection

How could you
leverage
CaliforniaColleges.ed
u to support **your**
district's goals ?





Implementation Support

We work with your district Point of Contact to provide districtwide implementation support & resources.

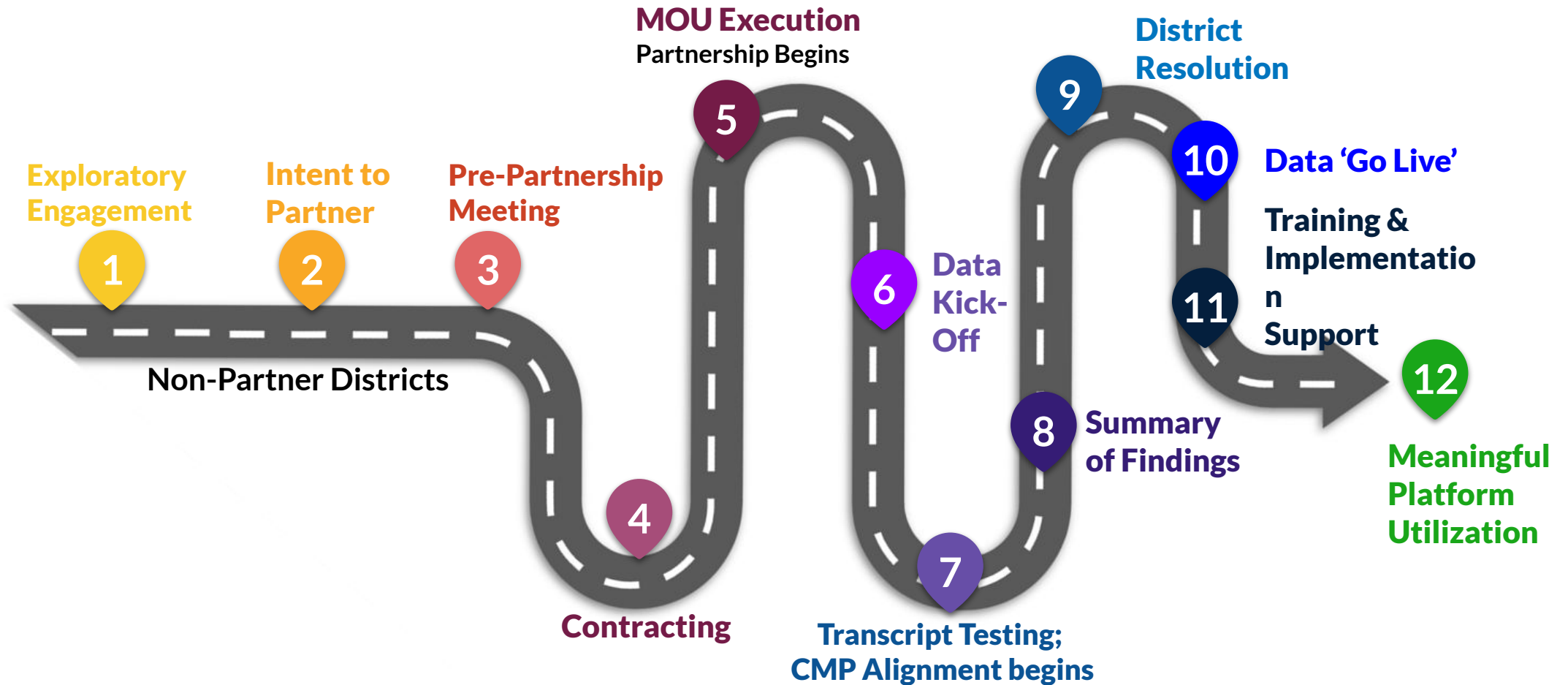


We help you:

- ▶ Build capacity
- ▶ Identify focus areas based on district priorities
- ▶ Develop an implementation plan
- ▶ Provide training and resources
- ▶ Develop goals and set targets
- ▶ Utilize reports to monitor progress and support interventions



District Partnership Roadmap



Next Steps



CALIFORNIA
COLLEGES *.edu*



The Official College & Career Planning
Platform of the State of California