

Introducing CaliforniaColleges.edu

Santa Clara County Office of Education

October 14, 2024



**CALIFORNIA
COLLEGES.edu**



The Official College & Career Planning
Platform of the State of California

California College Guidance Initiative

Who We Are

- ▶ **Manager of CaliforniaColleges.edu**, the State of California's official college and career planning platform.
- ▶ **AB 132 legislatively-designated**, authorized service provider to all California school districts ([California Education Code 60900.5](#)).
 - In addition, to fulfill CCGI's statutory requirements, SB 153 was signed by the Governor.
- ▶ A crucial component of **California's C2C Data System**, as established by AB 132.

Who We Are Not

- ▶ A vendor.
- ▶ A grant-funded program.



What We Do

CaliforniaColleges.edu is free to all public school districts that serve 6th-12th grade students in California.

- ▶ **We provide college and career planning tools** to students and educators through CaliforniaColleges.edu.
- ▶ **We connect California systems**, including integrations with all three public higher education systems (**CCC, CSU, UC**) and the California Student Aid Commission (**CSAC**).
- ▶ **We partner with school districts** to bring high school students' transcript data to CaliforniaColleges.edu.



Partnership with CCGI

Partner Districts have formal data-sharing agreements with CCGI in order to bring their high school transcript data to CaliforniaColleges.edu:

Unique features for Partner Districts include:

- ▶ **“a-g” Alignment Support** for districts to ensure that students get correct “a-g” credit for high school courses and grades in their college applications.
- ▶ **CSU and UC Eligibility Tools** that allow students to see their progress towards meeting the minimum requirements for admission to a CSU and UC.
- ▶ The ability to **import verified transcript data** to their Cal State Apply and UC application.



CALIFORNIA
COLLEGES.edu
DISCOVER. PLAN. LAUNCH.

CCGI Partner Districts

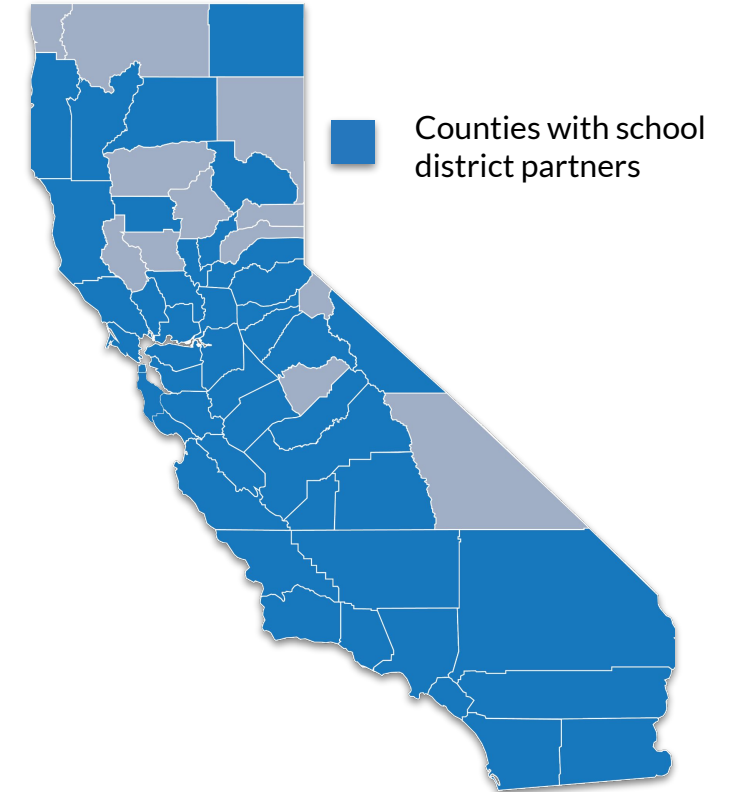
More than 70% of California's high school students are enrolled in a school district that has partnered with CCGI.

Our Partner Districts include more than **250 school districts** and serve more than **1.3 million 9th-12th grade students** in California.

And each year, our Partner list continues to grow!

▼ See who our Partner Districts are ▼

californiacolleges.edu/learnmore/partner-districts/





CALIFORNIA
COLLEGES.edu
DISCOVER. PLAN. LAUNCH.

Universal Access to CaliforniaColleges.edu

One goal of the Cradle-to-Career legislation is to make CaliforniaColleges.edu available to every school district, student, and educator in California by 2026.

297

Official school district partners

2M+

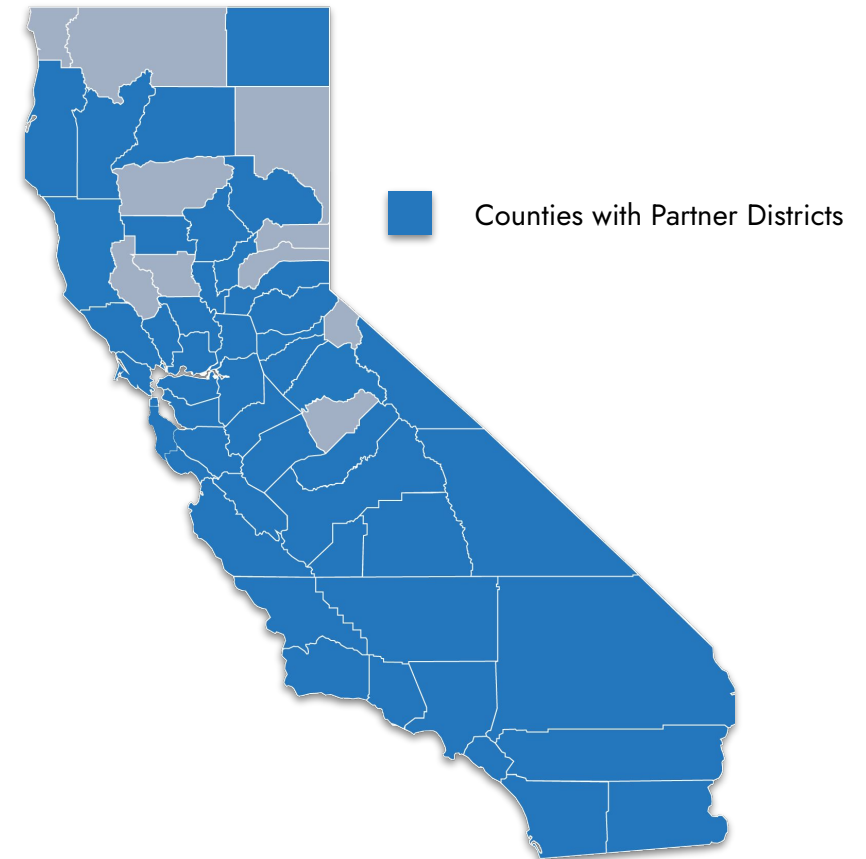
6th-12th grade students served

85

School districts in the pipeline for partnership by Fall 2024

552k

Additional students in the pipeline who will be served by Fall 2024



Data accurate as of July 2024.

Student and Educator Tools

Career



Career Assessments

Career Search & Favorite

College & Career Lessons

Life Planner

Student Activity Reports

College



College & Major Search

CSU & UC Eligibility

Application Integrations

CMP Alignment Support

Eligibility Reports

Application Status Reports

Financial Aid



Financial Aid Lessons

Application Integrations

Lesson Progress Reports

Application Status Reports



Career-Major-College Exploration

Career Assessment s

Students take Interest Profiler, Learning & Productivity, Work Values, Intelligences, Personality, and/or Skills assessment(s).

Career Exploration

Based on assessment results, students click on matching careers, go to corresponding fact sheets, and use Career Search.

Major Exploratio n

Based on career interests, students explore programs and majors that interest them & learn more about what they involve.

College Exploration

Based on major exploration and using College Search, students find colleges that match their needs.



Provide more than one opportunity to take Career Assessments (i.e. 7th, 9th and 11th).



Students "favorite" careers they like. Connect careers to career pathways.



Connect majors to careers and courses in high school to prepare.



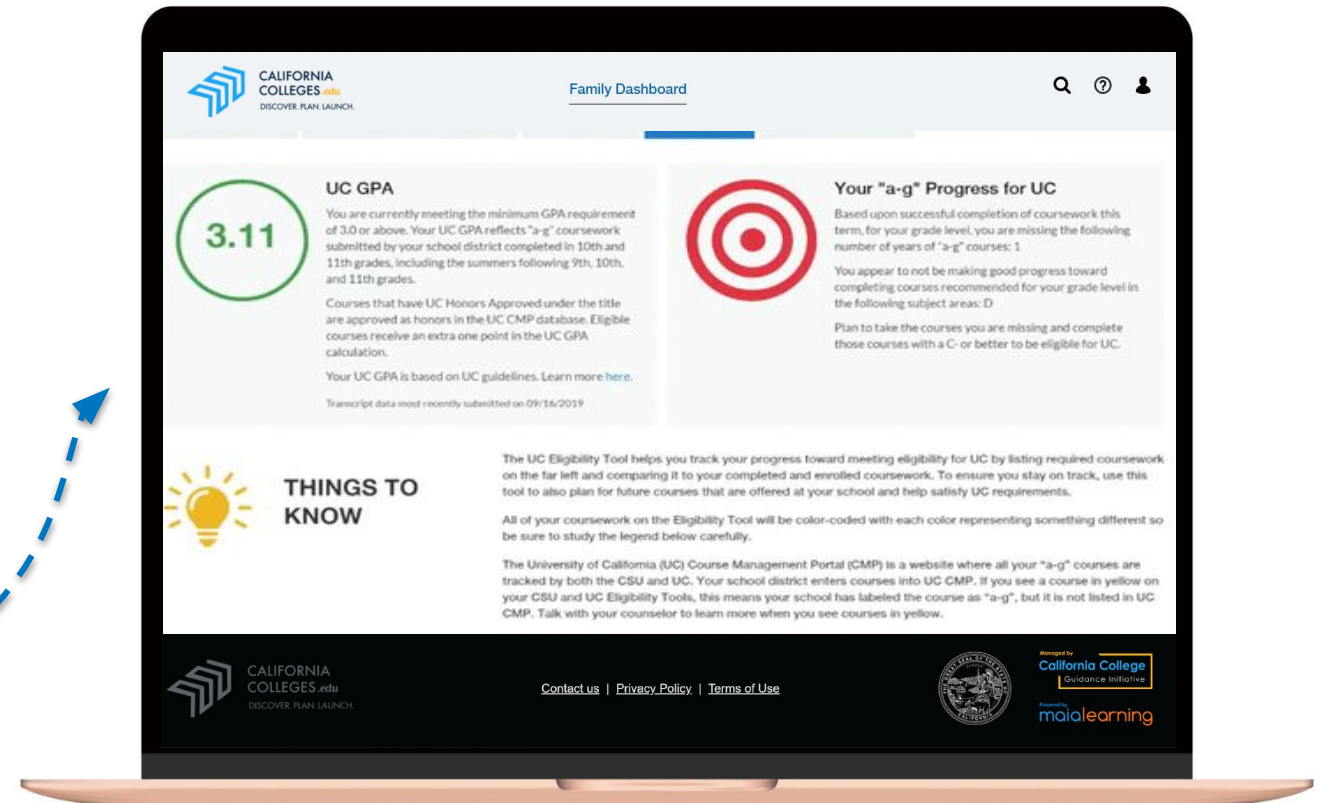
Ensuring student's Academic Planners match their desired career, college, and major choices.



CALIFORNIA
COLLEGES.edu
DISCOVER. PLAN. LAUNCH.

CSU and UC Eligibility Tools (Students)

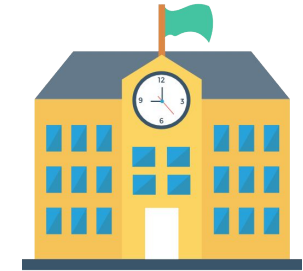
Students in Partner Districts can use CSU and UC Eligibility Tools to quickly track their progress toward meeting “a-g” requirements.



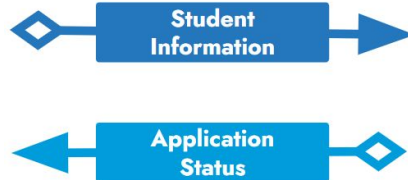


CALIFORNIA
COLLEGES.edu
DISCOVER. PLAN. LAUNCH.

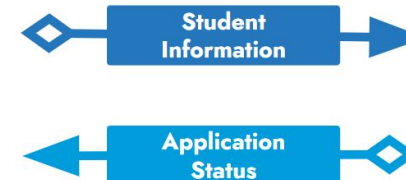
Connecting California's Systems



School District



Student launches applications
from CaliforniaColleges.edu





CALIFORNIA
COLLEGES .edu
DISCOVER. PLAN. LAUNCH.

What is CaliforniaColleges.edu?



CALIFORNIA
COLLEGES .edu
DISCOVER. PLAN. LAUNCH

Javier & Yvonne

Student & Educator



Tools for Educators

Educators in partner districts can run reports to monitor student progress on their activities on CaliforniaColleges.edu.

The screenshot displays the 'Manage Reports' interface. At the top, the navigation bar includes the California Colleges.edu logo, the title 'Educator Dashboard', and links for 'College', 'Career', and 'Financial Aid'. The main heading is 'Manage Reports' with a subtext: 'Track your student's college and career readiness by running reports.' Below this, a paragraph explains the process: 'Quickly and easily obtain the aggregate data you need to better support your students on their path to being college and career ready. Select a report, choose your filters, and then, run report. View report summary and drill down on individual links with the summary for more details. Drill down even further, if you choose, by clicking on individual student names in the Student List tab and view their My Plans.'

The 'Select Report' section features a dropdown menu currently set to 'Academic' and a 'Select Report Type' dropdown. A link 'Have a report question? Contact Us' with a question mark icon is also present. The 'Select Filters' section contains several dropdown menus: 'Select Grade', 'Select Course', 'Select Section', 'Select Gender', 'Select Ethnicity', 'Select Special Population', and 'Select Race'. There are also input fields for 'Start Date: MM/DD/YYYY' and 'End Date: MM/DD/YYYY'. A 'Run Report' button and a 'Reset Filters' button are located to the right of the filters. At the bottom, it shows 'Report: None', 'Filters Selected: Grade: All, Course: All, Section: All, Gender: All, Ethnicity: All, Special Population: All, Race: All', and 'Actions: Print Download XLSX Download CSV'. A 'Classic' view toggle is visible in the bottom left corner.





CALIFORNIA
COLLEGES.edu
DISCOVER. PLAN. LAUNCH.

Implementing Equity-Focused State Policies

Districts can use the data and reporting tools on CaliforniaColleges.edu to support successful implementation of equity-focused state policies.



Alignment to District Goals and Priorities

Through strategic implementation, CaliforniaColleges.edu can support with:

- ▶ Expanding career/college exploration and knowledge for all students.
- ▶ Increasing “a-g” completion for high school students.
- ▶ Reducing the burden on students when applying to college through CMP course alignment.
- ▶ Increasing college application support and completion for all students.
- ▶ Increasing CSU and UC application support and completion for CSU/UC-eligible students.
- ▶ Expanding awareness of financial aid and increasing financial aid completion.

LCAP



SPSA



CALIFORNIA
COLLEGES.edu
DISCOVER. PLAN. LAUNCH.

Reflection

How could you leverage
CaliforniaColleges.edu
to support **your**
county's college and
career goals ?



Next Steps



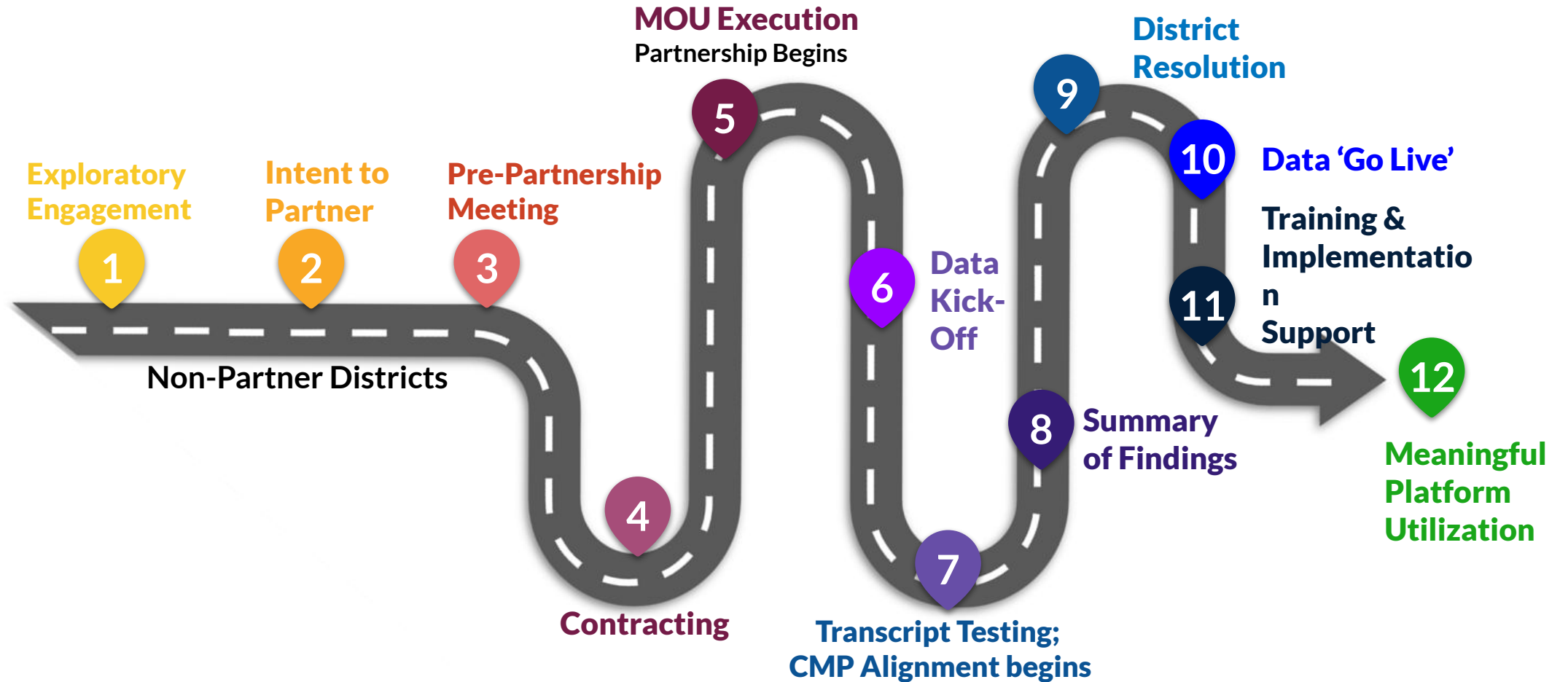
CALIFORNIA
COLLEGES *.edu*



The Official College & Career Planning
Platform of the State of California



District Partnership Roadmap





Implementation Support

We work with your district Point of Contact to provide districtwide implementation support & resources.



We help you:

- ▶ Build capacity
- ▶ Identify focus areas based on district priorities
- ▶ Develop an implementation plan
- ▶ Provide training and resources
- ▶ Develop goals and set targets
- ▶ Utilize reports to monitor progress and support interventions



Guided Exploration: The Student Experience



11th Grade Account:

Username:
junior@demo.edu
Password:
Pass12345

12th Grade Account:

Username:
Senior4@demo.edu
Password:
Pass12345

Explore

- ▶ **Navigate to:**
 - My Plan
 - My Career Plan
 - Top Careers
- ▶ **Click Around:**
 - Careers & Career Summaries
 - Work Activities
 - Related Careers
 - Programs, majors and colleges
- ▶ **Consider:**
 - What would it look like to pursue this career at a **CSU** campus?