

Introducing CaliforniaColleges.edu

Travis Unified School District

1/11/2024



CALIFORNIA
COLLEGES.*edu*



The Official College & Career Planning
Platform of the State of California

California College Guidance Initiative

Who We Are

- State-funded nonprofit.
- Manager of **CaliforniaColleges.edu**.
- Critical part of infrastructure for the **Cradle-to-Career** system.

Why We're Here

- To smooth the path to college and career for all California students.
- To ensure equitable outcomes for all students, especially the underserved.

What We Do

- College and career planning.
- Capacity building.
- Provide data-informed tools to students, parents, and educators.

Visit the Cradle-to-Career Website



What is CaliforniaColleges.edu?

California's official college and career planning platform.



Built for Californians Designed to meet the specific needs of California students, parents, educators, and school districts.



Connects California Systems The only platform integrated with all three state public higher education systems (CCC, CSU, UC) and the California Student Aid Commission (CSAC).



Written into California Ed. Code CaliforniaColleges.edu is authorized service provider for all California school districts.



Funded by the State of California CaliforniaColleges.edu is funded by the State of California through Proposition 98.



Critical part of infrastructure for the California's Cradle-to-Career system AB 132 outlines specific steps in order to implement the Cradle-to-Career System and realize its objectives, including making CaliforniaColleges.edu tools and services free to all California school districts serving 6-12th grade students and designating CaliforniaColleges.edu as the preferred starting point for all applications to California public colleges, FAFSA and CADAA.

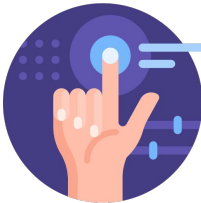
Our Role in Recovery with Equity

CaliforniaColleges.edu is an infrastructure that can help your collaborative make significant progress on four of the Strategies from the Recovery with Equity Report:



Student Retention through Inclusive Support

Free tier one tools and resources to all 6-12 grade students and educators in California. We also partner with school districts to further support data monitoring and targeted student interventions.



High Tech, High Touch Advising

We provide comprehensive, customized sets of lessons and tools for students, actionable reporting for educators, and streamlined intersegmental processes.



College Preparation and Early Credit

We provide “a-g” coursework verification and eligibility tracking for CSU and UC, as well as support implementation of the A-G Completion and Improvement Grants.



College Affordability

We provide lessons and tools to help students understand their financial aid options and submit their FAFSA or California Dream Act Application, as well as support implementation of AB 469 and AB 2015.

CCGI Partner Districts

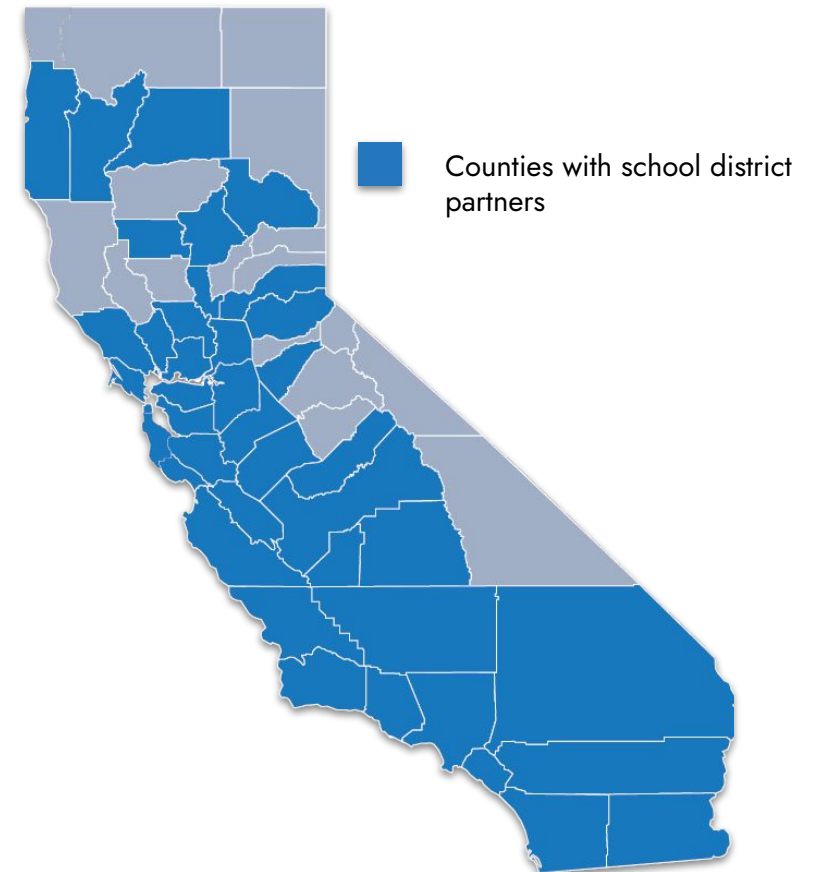
More than 50% of California's high school students are enrolled in a school district that has partnered with CCGI.

Our Partner Districts include over **217 school districts** that serve more than **1 million 9th-12th grade students** in California.

And each year, our partner list continues to grow!

▼ **See who our Partner Districts are** ▼

californiacolleges.edu/learnmore/list-of-partner-districts/





CALIFORNIA
COLLEGES.edu
DISCOVER. PLAN. LAUNCH.

District Statuses

Partner Districts in Solano County And Surrounding Districts

Vacaville Unified School District '23

Oakland Unified
School District '23

Vallejo Unified School District '23

San Francisco Unified
School District '23

Mt. Diablo Unified School District
'23

Fremont Unified
School District '23

Sacramento City Unified School
District '23

John Swett Unified
School District '23

Future District Engagement

Fairfield-Suisun





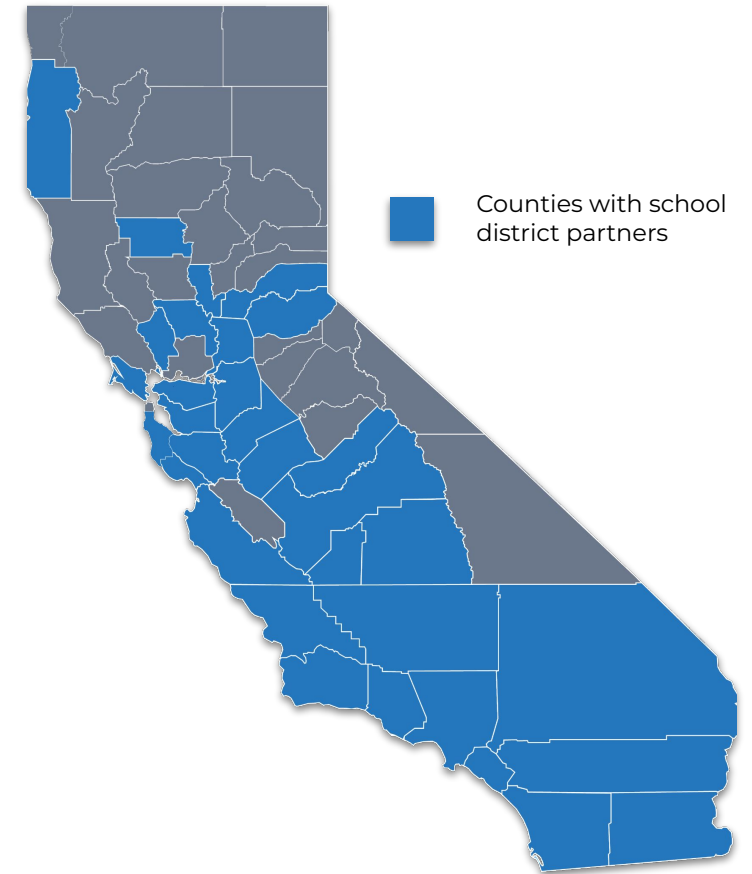
CALIFORNIA
COLLEGES.edu
DISCOVER. PLAN. LAUNCH.

CCGI Partner Districts

More than **50%** of California's high school students are enrolled in a school district that has partnered with CCGI.

Our Partner Districts include nearly **200 school districts** and serve more than **1 million 9th-12th grade students** in California.

And each year, our partner list continues to grow!



▼ See who our Partner Districts are ▼

californiacolleges.edu/learnmore/list-of-partner-districts/

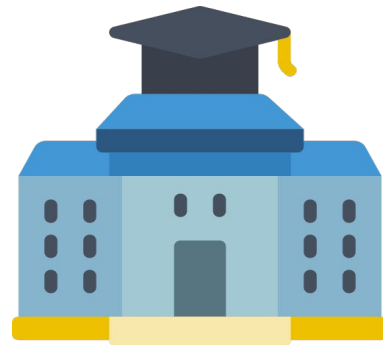
What is CaliforniaColleges.edu?

CaliforniaColleges.edu is the state of California's official college and career planning platform.

Benefits of a CaliforniaColleges.edu account include access to free tools to help students with:



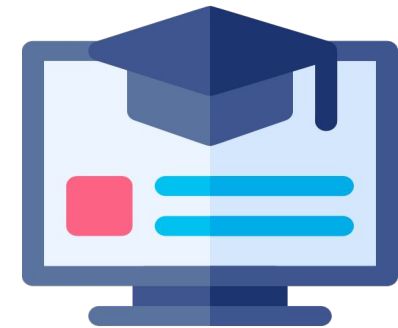
**Career
Planning**



**College
Planning**



**Financial
Aid**



**Progress
Tracking**

What Tools are Available on CaliforniaColleges.edu?

CaliforniaColleges.edu provides tools to empower students and educators alike.

| We provide students with:



- Career exploration tools
- College and major search tools
- Financial aid lessons
- CSU/UC eligibility tools
- College and financial aid application integration

| We provide educators with:



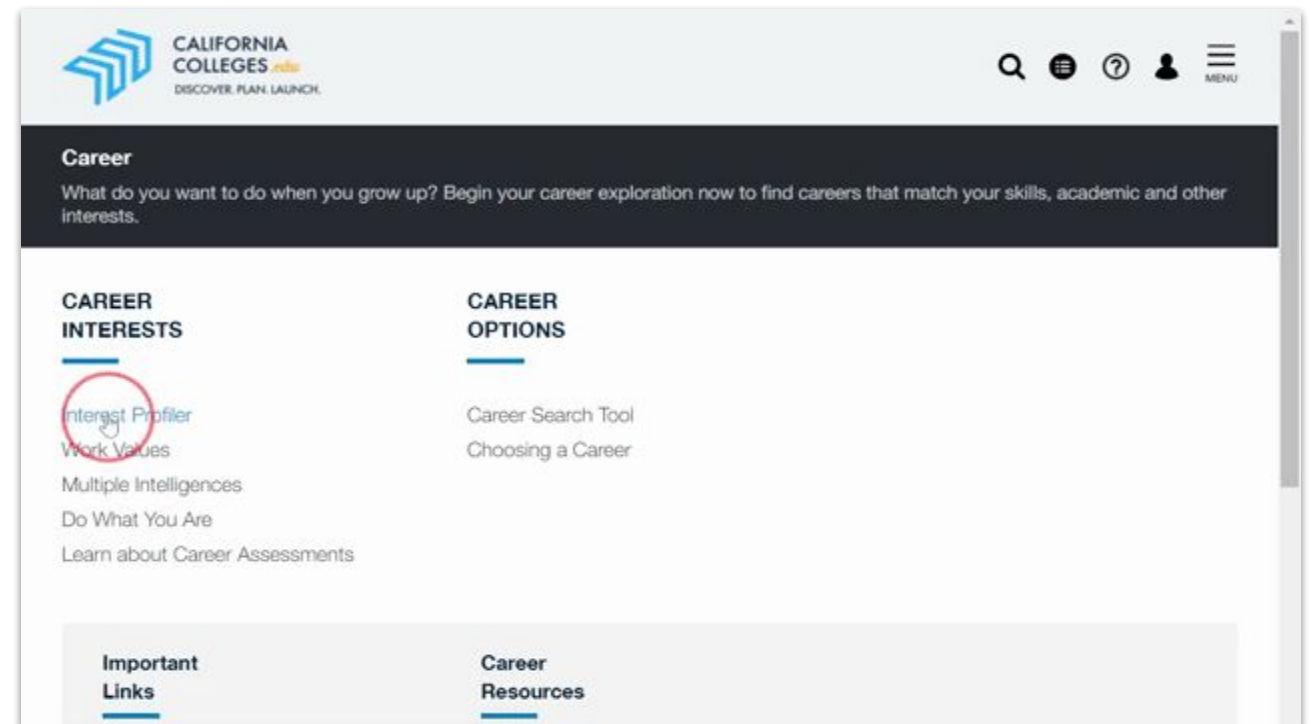
- College and career planning tools *in one place*
- Ability to track student progress and better target interventions
- Data and reporting tools to help districts comply with regulatory requirements

Career Assessments

Our career assessments can help students identify their values, interests, learning styles, and personalities and learn how they can connect to fulfilling careers.

Our assessments include:

- ▶ Interest Profiler
- ▶ Work Values
- ▶ Learning & Productivity
- ▶ Intelligences
- ▶ Personality
- ▶ Skills

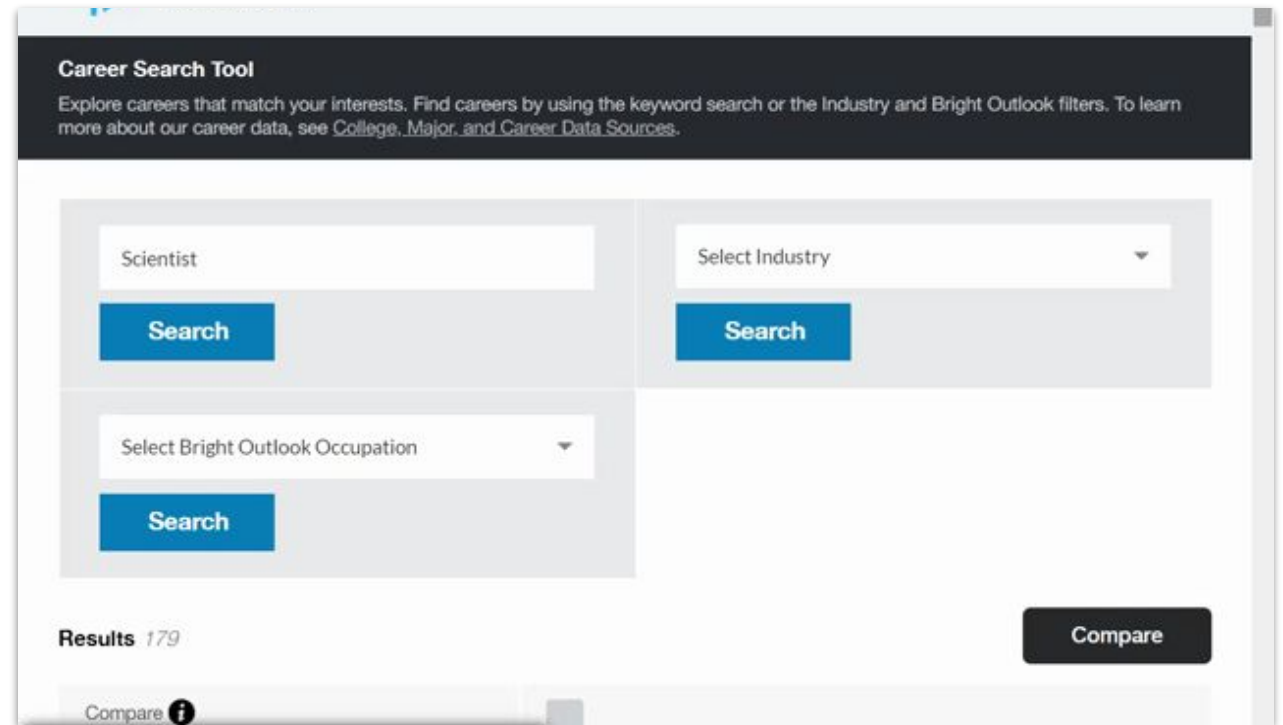


Career Search Tool

Our Career Search Tool helps students find the right career path by figuring out what they want to be and what it will take for them to get there.

CaliforniaColleges.edu allows students to:

- ▶ Explore careers that match their interests.
- ▶ Learn what careers involve.
- ▶ See what kind of pay and growth potential jobs offer.
- ▶ Understand what education and skills they will need to pursue their career of choice.



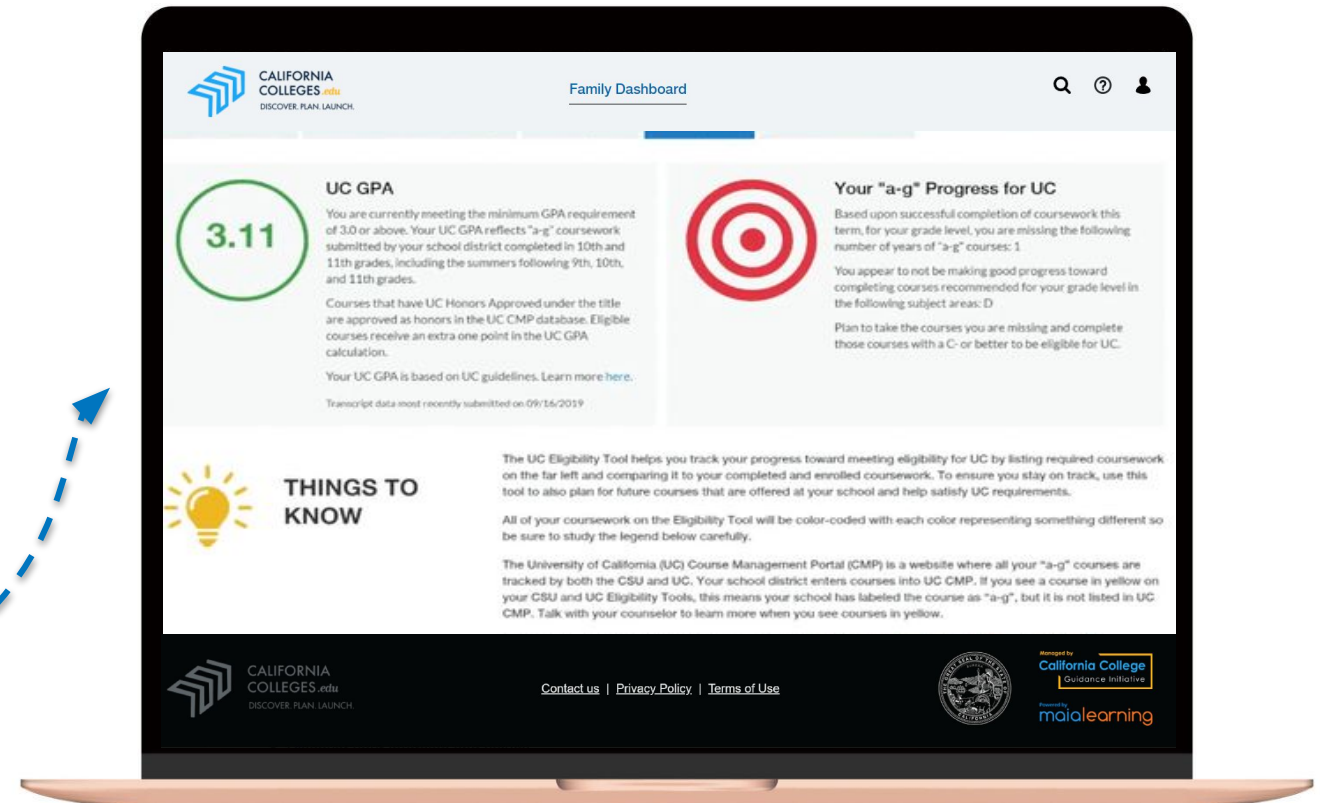
The screenshot shows the 'Career Search Tool' interface. At the top, a dark header contains the title 'Career Search Tool' and a brief description: 'Explore careers that match your interests. Find careers by using the keyword search or the Industry and Bright Outlook filters. To learn more about our career data, see [College, Major, and Career Data Sources](#).' Below the header, there are three search filters, each with a text input field and a blue 'Search' button. The first filter has 'Scientist' in the input field. The second filter is labeled 'Select Industry' with a dropdown arrow. The third filter is labeled 'Select Bright Outlook Occupation' with a dropdown arrow. At the bottom left, it says 'Results 179'. At the bottom right, there is a dark button labeled 'Compare'. At the very bottom, there is a 'Compare' button with an information icon.



CALIFORNIA
COLLEGES.edu
DISCOVER. PLAN. LAUNCH.

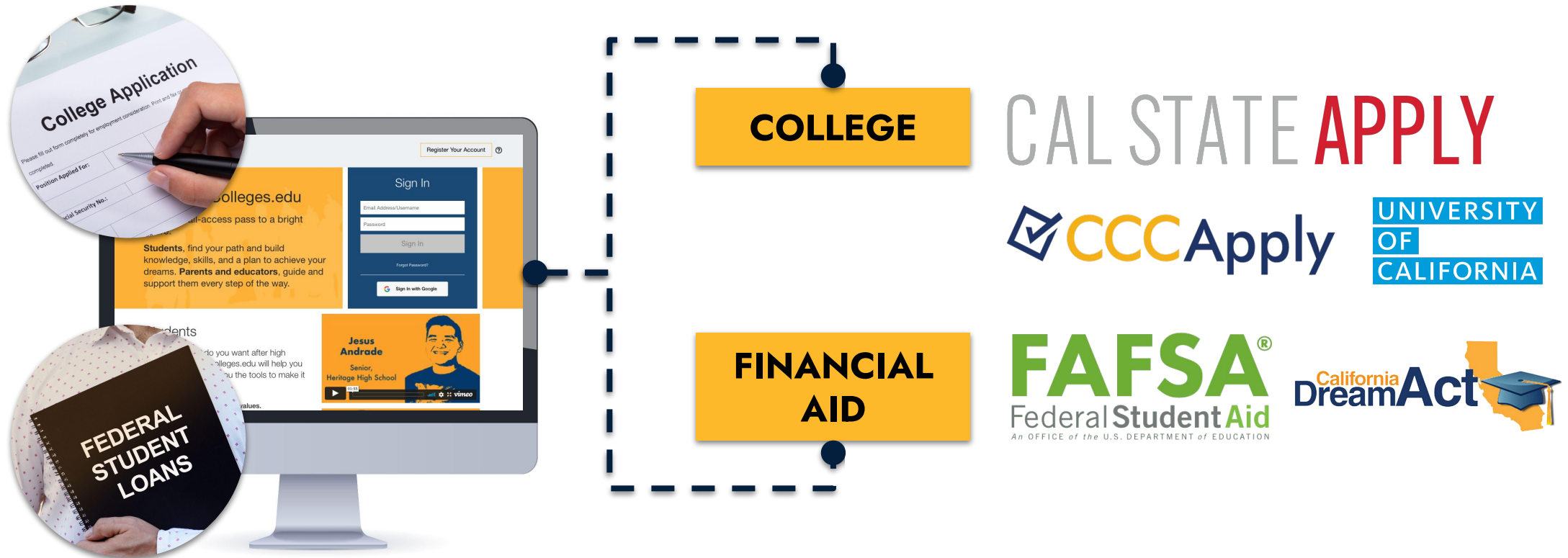
CSU and UC Eligibility Tools (Students)

Students in Partner Districts can use CSU and UC Eligibility Tools to quickly track their progress toward meeting “a-g” requirements.



College and Financial Aid Application Integrations

Students can launch college and financial aid applications directly from CaliforniaColleges.edu and track their progress.





CALIFORNIA
COLLEGES .edu
DISCOVER. PLAN. LAUNCH.

What is CaliforniaColleges.edu?



CALIFORNIA
COLLEGES .edu
DISCOVER. PLAN. LAUNCH

Javier & Yvonne
Student & Educator



CALIFORNIA
COLLEGES.edu
DISCOVER. PLAN. LAUNCH.

Financial Aid Tools

| We provide students with:



Financial Aid Lessons

Application Launch

Offer Comparison Tool

| We provide educators with:



Data & Reporting Tools

Student Progress Tracking

AB 2015/469 Compliance



CALIFORNIA
COLLEGES.edu
DISCOVER. PLAN. LAUNCH.

Tools for Educators

Educators in partner districts can run reports to monitor student progress on their activities on CaliforniaColleges.edu.

The screenshot displays the 'Educator Dashboard' on the CaliforniaColleges.edu website. The top navigation bar includes the logo, 'Educator Dashboard', 'College', 'Career', and 'Financial Aid' links, along with search, help, and user icons. The main section is titled 'Manage Reports' with a subtitle 'Track your student's college and career readiness by running reports.' Below this, a paragraph explains how to use the reports. The 'Select Report' section has a dropdown menu set to 'Academic' and a 'Select Report Type' dropdown. A 'Have a report question? Contact Us' link with a question mark icon is also present. The 'Select Filters' section contains several dropdown menus for 'Select Grade', 'Select Course', 'Select Section', 'Select Gender', 'Select Ethnicity', and 'Select Special Population', as well as 'Select Race', 'Start Date: MM/DD/YYYY', and 'End Date: MM/DD/YYYY'. A 'Run Report' button and a 'Reset Filters' button are located to the right of the filters. At the bottom, it shows 'Report: None', 'Filters Selected: Grade: All, Course: All, Section: All, Gender: All, Ethnicity: All, Special Population: All, Race: All', and 'Actions: Print Download XLSX Download CSV'.





CALIFORNIA
COLLEGES *.edu*
DISCOVER. PLAN. LAUNCH.

Educator Perspectives on CaliforniaColleges.edu



Curriculum and Lesson Plans

Each grade-level activity has an associated lesson plan that educators can use during instructional time and counseling interventions.

CCGI lessons are:

- Trackable
- Sequential but flexible
- Aligned to standards

Curriculum and Lesson Plans

California College
Guidance Initiative



What Do I Like?: Interest Profiler (6.2)

Goal: Students will evaluate their personal interests and explore matching career options.

Lesson Time Options

This lesson requires one 45-60 minute class period.

Student Materials

This lesson plan is part of the default **Activities by Grade Level**. The corresponding student My Task for this lesson is called **What Do I Like?** For more information, click on **How do students download and upload documents to CaliforniaColleges.edu?** under **Assignments** in [Educator Help](#).

In This Packet

This packet includes everything you need to complete the lesson.

- Student Worksheet
- Educator Guide
- Appendix: Learning Extension

Standards

The literacy skills of Common Core can be broken down into sections – reading, writing, and speaking and listening (language skills are outside of the focus of CaliforniaColleges.edu). In the lesson, students will practice the following skills:

Common Core Skill	Practiced in this Lesson
Reading for Information	CCR – Reading 4, 7; Reading Information – 4, 7
Narrative Writing	CCR-Writing 3; Writing 3

College & Career Readiness Lessons

CaliforniaColleges.edu Lessons have been crosswalked to the below standards:

- ▶ Common Core Standards 2017
- ▶ ASCA Mindset & Behavior Standards
- ▶ CCSS College & Career Readiness benchmarks
- ▶ AVID Standards
- ▶ California T-SEL competencies

CaliforniaColleges.edu Lessons & Activities Sample Action Plan					
Suggested Implementation Period	Anticipated Dates	ASCA Domain	Focus	Grades	Topic
Fall Quarter 2		Academic/Personal-Social	Planning for High School/How Do I Learn?	6th-8th	Go with Me! (8.1)
Fall Quarter 2		Academic	What Do I Like? Interest Profiler (8.2)	6th-8th	What Do I Like? Interest Profiler (8.2)
Spring Quarter 1		Personal/Social	How Do I Learn?	8th	Family Lessons: My Aspirations (8.3)
Spring Quarter 1		Academic	Planning for High School	7th-8th	Planning Lessons for High School
Spring Quarter 1		Academic	Preparing and Planning for College	6th-8th	Reflections and Goal Setting
Spring Quarter 1		Academic/Career	Develop College Knowledge CA Systems of Hi	7th-8th	College 101: An Introduction (8.3)
Spring Quarter 2		Academic	Planning for College/Financial Aid Literacy	7th-8th	Module 1: Planning for College/Financial Aid
Spring Quarter 2		Academic	Develop College Knowledge CA Systems of Hi	7th-8th	My First College
Spring Quarter 2		Academic	Develop College Knowledge CA Systems of Hi	7th-8th	Finding Meaningful Experiences and Activities
Spring Quarter 2		Academic	Develop College Knowledge CA Systems of Hi	7th-8th	My Future Alma Mater: College Research
Spring Quarter 2		Academic	Develop College Knowledge CA Systems of Hi	7th-8th	My Future Alma Mater: College Presentation
Spring Quarter 2		Personal/Social	Academic Efficacy/Persistence-Goal Orientation	7th-9th	Introduction to SMART Goals
Fall Quarter 1		Academic	Planning for High School	9th	Success School Self
Fall Quarter 2		Academic	Planning for High School	9th	Task and Time Management (9.2)
Fall Quarter 2		Career	Explore Careers and Interest	9th	Past and Future Me: Career Investigation (9.3)
Spring Quarter 1		Academic	Preparing and Planning for High School & Colle	9th	Past and Future Me: Revised High School Plan (9.3)
Spring Quarter 1		Academic	Preparing and Planning for High School & Colle	9th	Past and Future Me: Reflection and Annual SMART Goal Development
Spring Quarter 2		Academic	Preparing and Planning for High School & Colle	9th	Family Lesson: My Future Resources

Lessons Action Plan



CALIFORNIA
COLLEGES.edu
DISCOVER. PLAN. LAUNCH.

MTSS Mapping

	NOSCA Competency	CCOI Data Informed Reporting Tools	Grade Level	Select Platform Tools	Select Student My Plan Activities	MTSS Tier 1 Interventions	Participation Data [Who, What, When Where & How Long]	mindset & Behavior Data [Skills, Knowledge & Attitudes]	Outcome [Achievement, & Disruptive]
6	College Aspirations NOSCA Data Elements: Build a college going culture based on early college awareness by nurturing in students the confidence to aspire to college and the resilience overcome challenges along the way. Maintain high expectations by providing adequate supports. What to Measure: Advice and productive engagement in school is one indicator of students' aspirations. To access your students' level of engagement, see if they are attending school, behaving in school and performing academically.	Career Reporting: Favorited Careers, Career Assessment Completion Data College Reporting: Favorited Colleges, Majors. Supplemental Data-My Plan Activities: Career, Major, College List, My Journal	6th	<input type="checkbox"/> Career Assessments: Interest Profiler	<input type="checkbox"/> Start Career List	<input type="checkbox"/> District Wide Activities			
7			7th	<input type="checkbox"/> Career Assessments: Learning and Productivity	<input type="checkbox"/> Start College List	<input type="checkbox"/> School Site Activities			
8			8th	<input type="checkbox"/> Career Search Tool	<input type="checkbox"/> My Journal	<input type="checkbox"/> Classroom Instruction			
9				<input type="checkbox"/> College Search Tool					
10				<input type="checkbox"/> Major Search Tool					
11				<input type="checkbox"/> Academic Planner					
12				<input type="checkbox"/> 6th-8th Grade Financial Aid Lessons					
13	Academic Planning for College and Career Readiness	Career Reporting: Favorited Careers, Career Assessment Completion Data	6th	<input type="checkbox"/> Career Assessments: Interest Profiler	<input type="checkbox"/> Add to Career List	<input type="checkbox"/> District Wide Activities			
14									

CaliforniaColleges.edu: [MTSS Lesson & Activities Action Plan](#)



Lesson Sequence

- ▶ **English:**
 - 9-11: [Academic Planner](#)
 - 12: Launch MVC Application
- ▶ **Math:**
 - 9-12: [College Research Presentation](#)
 - 9-12: [College Research Worksheets](#)
- ▶ **Social Science:**
 - 10 – [Multiple Intelligences](#) and [Worksheet](#)
 - 11 – [Do What You Are](#) and [Worksheet](#)
 - 12 – Launch FAFSA (Counselors Facilitate)
- ▶ **Science:**
 - 9-12: [Career Research](#)
 - 9-12: [Career Research Worksheets](#)
- ▶ **World Language/Business/VAPA/Other:**
 - 9-12: [Journal Entries](#)
 - 9-12: [CCGI Notes Worksheet](#)


CCGI Launch Day

- October 1st
- All students participate in CCGI Activities
- Lesson Plans, Presentations, and Worksheets provided to teachers
- Each department covers a different topic
 - Students receive 4-5 different lessons throughout the day
 - All centered on College and Career Readiness



CALIFORNIA
COLLEGES.edu
DISCOVER. PLAN. LAUNCH.

Pittsburg USD Lessons

**Pittsburg**
High School

Home District Our Schools Search Translate Quicklinks

OUR SCHOOL SCHOLARS & FAMILIES

Scholars & Families

+ Academic Programs

- Counseling

Academic & Activities Probation

+ California Colleges Guidance Initiative

- College and Career

About Us

Notifications

Calendar

EAOP/DCAC College Advising

Making Waves

Trio Talent Search

Junior Pirates

Freshman - Year 1

Sophomore - Year 2

Junior - Year 3

Senior - Year 4

SAT/ACT information

College Applications


+ Financial Aid Information


Scholarships

NCAA

Home > Scholars & Families > Counseling > College and Career


College and Career Center Overview






COLLEGE AND CAREER CENTER OVERVIEW

COLLEGE AND CAREER CENTER CONTACT US



SYNITHA WALKER
College and Career Technician
synithawalker@pittsburgusd.net
(925) 473-2390 x7552
Send me a message on REMIND!
PHS CEEB Code: 052475
Room A201C (Inside the PHS library)



Pittsburg USD Lesson Plans



Counselor Scope and Sequence Sample

	School Matters (Academic)	You Matter (Social Emotional)	Your Future Matters (Career Exploration)
Grade 6	Homework/Organization skills (B-LS 3) <ul style="list-style-type: none"> Importance of grades Time Management Organization skills Stress (Stress)	Online Safety/Etiquette (B-SMS 9) <ul style="list-style-type: none"> Digital Citizenship Communicating with others (socially, academically) Appropriate social media usage Stress/Consent (Consent, Stress)	Interest Awareness (B-LS 10) & (M 3) <ul style="list-style-type: none"> Californiacolleges.edu: Interest Profiler Intro to RIASEC
Grade 7	Study Skills (B-LS 3) <ul style="list-style-type: none"> Californiacolleges.edu: Learning & Productivity Study skills/time management Stress (Stress)	Interacting with Teachers, Parents & Peers (B-SS 3) <ul style="list-style-type: none"> Bullying Advocacy Understanding/accessing resources Consent/Stress (Consent, Stress)	Exploring Post-Secondary (B-LS 7) & (B-SMS 6) <ul style="list-style-type: none"> HS Grad Requirements A-G Post-Secondary options (CC: College Search Tool) Majors (CC: Major Search Tool)
Grade 8	Academic and Post Secondary Options (B-LS 7) & (M 4) <ul style="list-style-type: none"> AERIES: Academic Planner HS Grad Requirements Credits Communicating with Teachers (Stress)	Healthy Relationships (B-SS 2) <ul style="list-style-type: none"> EverFi: Understanding Mental Wellness (What is Mental Health?, What is Anxiety? Coping strategies, Supporting Mental Health, Offering Support) (Consent, Stress)	Identifying my Strengths (B-LS 5) & (M 5) <ul style="list-style-type: none"> Californiacareerzone.org: Making Money Choices

Sample Scope and Sequence - Santa Clara USD

Demo



CALIFORNIA
COLLEGES *.edu*



The Official College & Career Planning
Platform of the State of California



CALIFORNIA
COLLEGES.edu
DISCOVER. PLAN. LAUNCH.

Reflection

How could you leverage
CaliforniaColleges.edu to
support **your district's**
goals?



Questions?



CALIFORNIA
COLLEGES *.edu*



The Official College & Career Planning
Platform of the State of California

Next Steps



CALIFORNIA
COLLEGES.*edu*

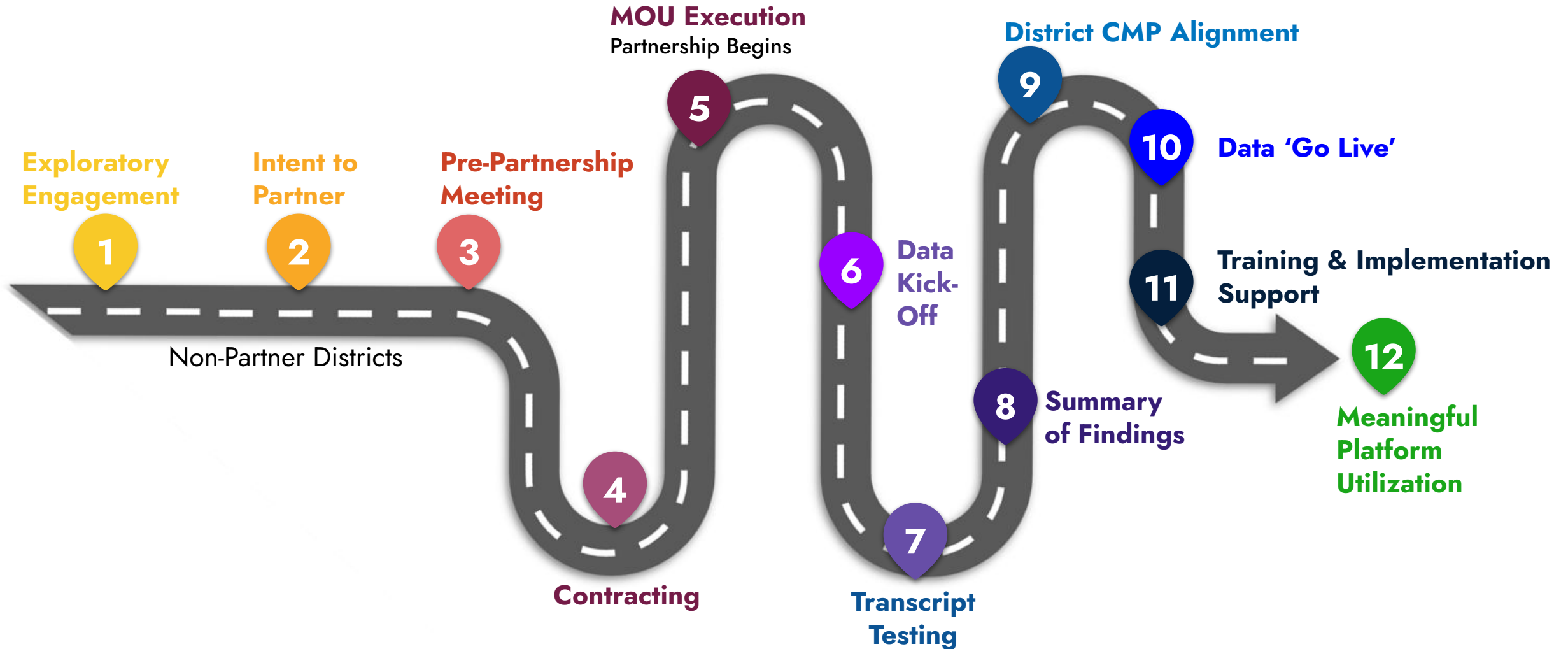


The Official College & Career Planning
Platform of the State of California



CALIFORNIA
COLLEGES.edu
DISCOVER. PLAN. LAUNCH.

District Partnership Roadmap





Cycle & Timeline

Below is the sample timeline for districts

	JUL	AUG	SEP	OCT	NOV	DEC	JAN	FEB	MAR	APR	MAY	JUN	JUL
Cycle Opens/ District Planning Begins	Jul. 1												
District Pre-Launch Meetings/ Planning (Step 1)				Oct. 1 – Feb. 15									
Contracting (Step 2)				Oct. 1 – Mar. 15									
CMP Data Alignment								Feb. 1 – Jul. 1					
Data Live (Step 3)													Jul. 1

Contact Us

CommunityEngagement@CaliforniaColleges.edu



CALIFORNIA
COLLEGES *.edu*



The Official College & Career Planning
Platform of the State of California

Phase I: Onboarding

Before a partner district can implement CaliforniaColleges.edu, it must go through a 3-step onboarding process. Those steps are:

1. Pre-MOU

- LEA submits Application for Technical Assistance.
- LEA registers for and attends a Launch Meeting.

2. Contracting

- CCGI sends LEA an MOU.
- LEA completes parent/guardian notification process and captures opt-outs in SIS.

3. Data Testing & “Go Live”

- MOU is fully executed.
- Parent Opt-Out deadline passed.
- LEA undergoes transcript testing.
- “Go Live” date is established.



Assemble a Cross-Functional Leadership Team



Leadership Team	A cross-functional team that sets goals and drives progress based on data analysis.
Point-of-Contact (POC)	Oversees partnership efforts and focuses on strategy development, execution, educator support, and logistics.
Data Lead	Works on data files, establishes regular upload routines, and collaborates with colleagues in necessary updates in the SIS.
Site Lead(s)	Serves as the school site point of contact and creates/manages educator accounts for their site.
CMP Lead	Works to ensure necessary updates are made to the CMP Doorways “a-g” list.

Phase II: Implementation

After the onboarding phase, partner districts will receive the following ongoing support to fully implement the use of CaliforniaColleges.edu:



Technical Assistance

User Support



Virtual Training

Office Hours

Regional Planning
Meetings

Spring 2022 Application Cycle & Timeline

Below is the timeline for districts with a “Go Live” date of Feb. 1, 2023.

	MAR	APR	MAY	JUN	JUL	AUG	SEP	OCT	NOV	DEC	JAN '23	FEB '23
Application Cycle Opens /District Planning Begins	Mar. 15 – Jun. 15, 2022											
District Launch Meetings /Planning (Step 1)			May 1 – Aug. 31, 2022									
Contracting (Step 2)			May 1 – Sep. 30, 2022									
CMP Data Alignment							Sep. 1, 2022 – Jan. 31, 2023					
“Go Live” (Step 3)												Feb. 1

Step 1: Assess

To fully benefit from data alignment and other support during the implementation process, it is important that you have the right setup. Consider the following:



1

Do you serve students in the 6th-12th grades as part of a unified or high school district?

2

Who would serve as members of your Cross-Functional Leadership Team?

3

Will your district continue using your current SIS for the next 1-2 years?

4

Can your district prioritize data matching and be responsive to requests to align your “a-g” list to the CMP?



Step 2: Plan

1

Identify personnel and put your Cross Functional Leadership Team in place.

2

Identify your Points-of-Contact for contracting, data, and implementation.

3

Decide which “Go Live” date (Spring or Fall) best fits your district’s plans.





CALIFORNIA
COLLEGES.edu
DISCOVER. PLAN. LAUNCH.

Step 3: Apply



Apply for Technical Assistance

cacollegeguidance.org/our-partners/k-12-partnerships/technical-assistance-application/

Universal Access to CaliforniaColleges.edu

The goal of the **Cradle-to-Career** legislation is to make **CaliforniaColleges.edu** available to every school district, student, and educator in California by 2026.

106

Official school district partners

750k

6th-12th grade students served

32

School districts in the pipeline for partnership by Fall 2022

1m

Additional students in the pipeline who will be served by Fall 2022

