

CaliforniaColleges.edu Overview

Tustin Unified School District

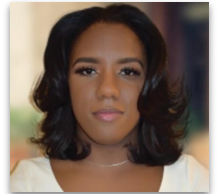
October 10, 2024



CALIFORNIA
COLLEGES.edu



The State of California's Official
College and Career Planning Platform



Dedreiana Elliott
Senior Manager



Today's Outcomes

1

Provide a brief **overview** of CaliforniaColleges.edu and tools available for students and educators.

2

Discuss TUSD **scope and sequence** and implementation plan for CaliforniaColleges.edu.

3

Explore **career assessments** on CaliforniaColleges.edu from a student perspective.

4

Discuss **next steps** for implementation of CaliforniaColleges.edu this academic year.





CALIFORNIA
COLLEGES.edu
DISCOVER. PLAN. LAUNCH.

California College Guidance Initiative

Who We Are

- ▶ **Manager of CaliforniaColleges.edu**, the State of California's official college and career planning platform.
- ▶ A **legislatively-authorized** service provider to all California school districts ([California Education Code 60900.5](#)).
- ▶ A crucial component of **California's Cradle to Career Data System**, as established by AB 132.

Who We Are Not

- ▶ A vendor.
- ▶ A grant-funded program.



The Tools on CaliforniaColleges.edu

The State of California's free and official college and career planning platform.

We provide students with:



Career Exploration

College and Major Search

CSU and UC Eligibility Tools

Financial Aid Lessons

College and Financial Aid
Application Integrations

We provide educators with:



Data Alignment Support

A-G Progress Monitoring

College and Financial Aid
Application Tracking

Reporting Tools
to Support Timely and
Intentional Intervention



Alignment to Tustin USD

District Goals Using CaliforniaColleges.edu

- ▶ Create district wide alignment by using a centralized platform for college and career planning
- ▶ Use this tool to aid students in the development and completion of their postsecondary goals
- ▶ Develop educator lesson plans using a scope and sequence to support each site with implementation





Year 1 Implementation Plan

When	Who	Activity	Timeline
Quarter 1	6-12th Graders	Student Account Registration	TBD
Quarter 2	6-8th Graders	Interest Profiler	TBD
Quarter 3	6-8th Graders	Self-Advocacy (6th) Adjusting & Advocating for Change (7th) SMART Goals (8th)	TBD

Student Account Registration



CALIFORNIA
COLLEGES *.edu*

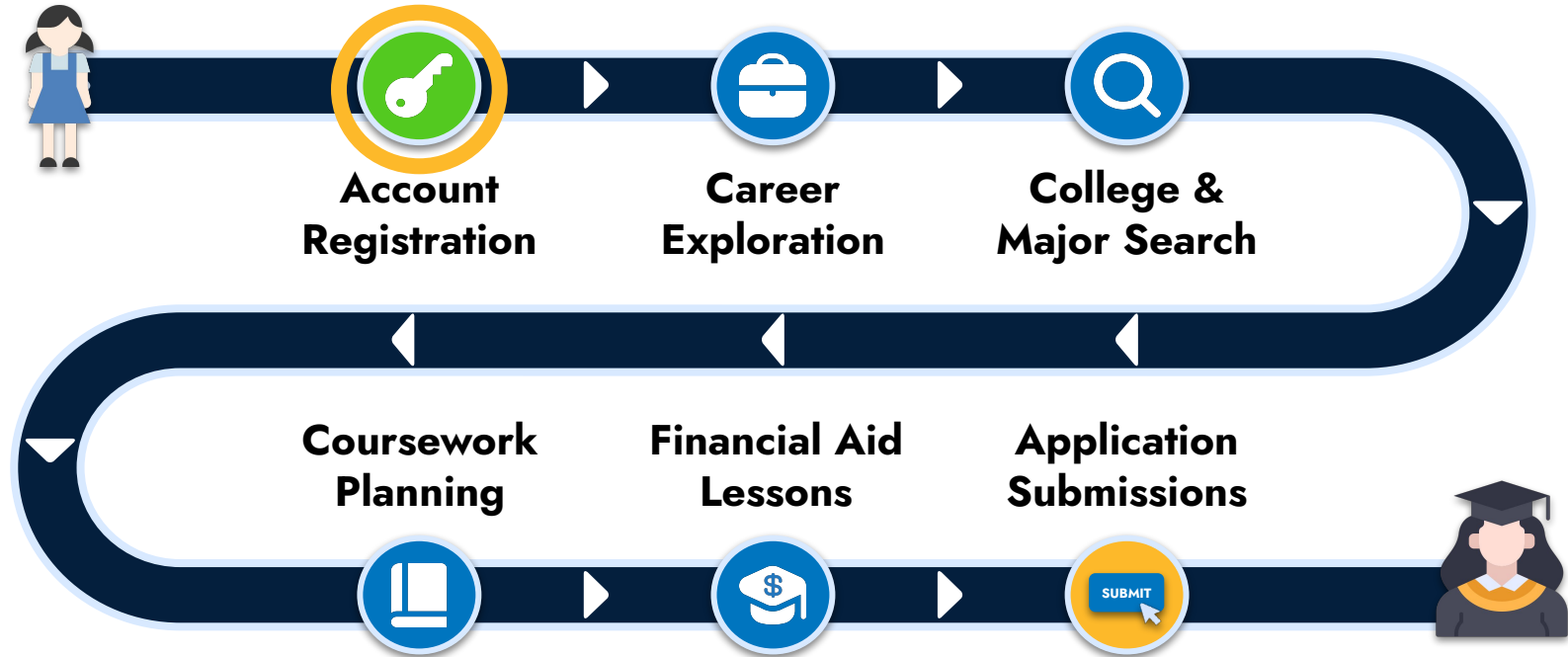


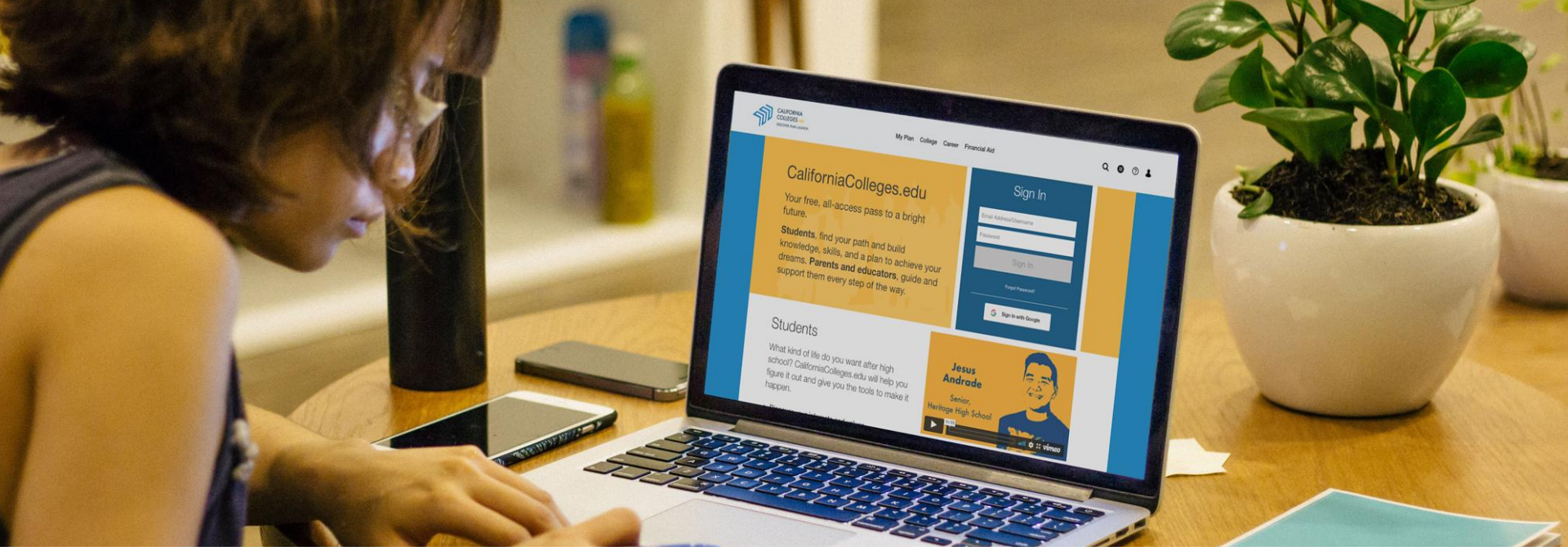
The Official College & Career Planning
Platform of the State of California



Smoothing the Path for Students

When students are signed in to CaliforniaColleges.edu, educators can track their activities and application progress using built-in reporting tools.





Demonstration of Student Account Registration



CALIFORNIA
COLLEGES.edu
DISCOVER. PLAN. LAUNCH.

Why Student Account Registration?

Have students register

Students' first step is to register on californiacolleges.edu



Access to platform tools

Registered students have access to all the resources available on CaliforniaColleges.edu



Ability to track goal setting and college/financial aid

Track the status of student applications and college/career planning



CALIFORNIA COLLEGES.edu
DISCOVER. PLAN. LAUNCH.

Register Your Account ?

Sign In

Email Address/Username

Password

Sign In

[Forgot Password?](#)

Sign In with Google

CaliforniaColleges.edu

Your free, all-access pass to a bright future.

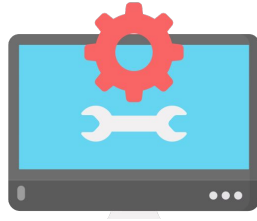
Students, find your path and build knowledge, skills, and a plan to achieve your dreams. **Parents and educators**, guide and support them every step of the way.

Planning for Student Account Registration

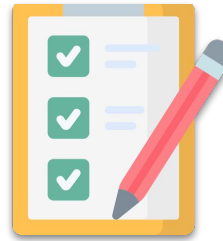
Below are key aspects needed when planning and developing a quality student account registration plan:



Message the why to all stakeholders



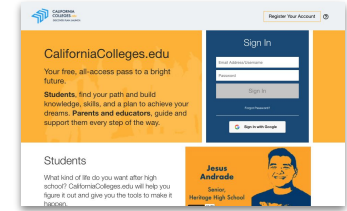
Troubleshooting process



Initial and ongoing plan



Educator Reporting



Provide resources and toolkits to all stakeholders

Career Assessments



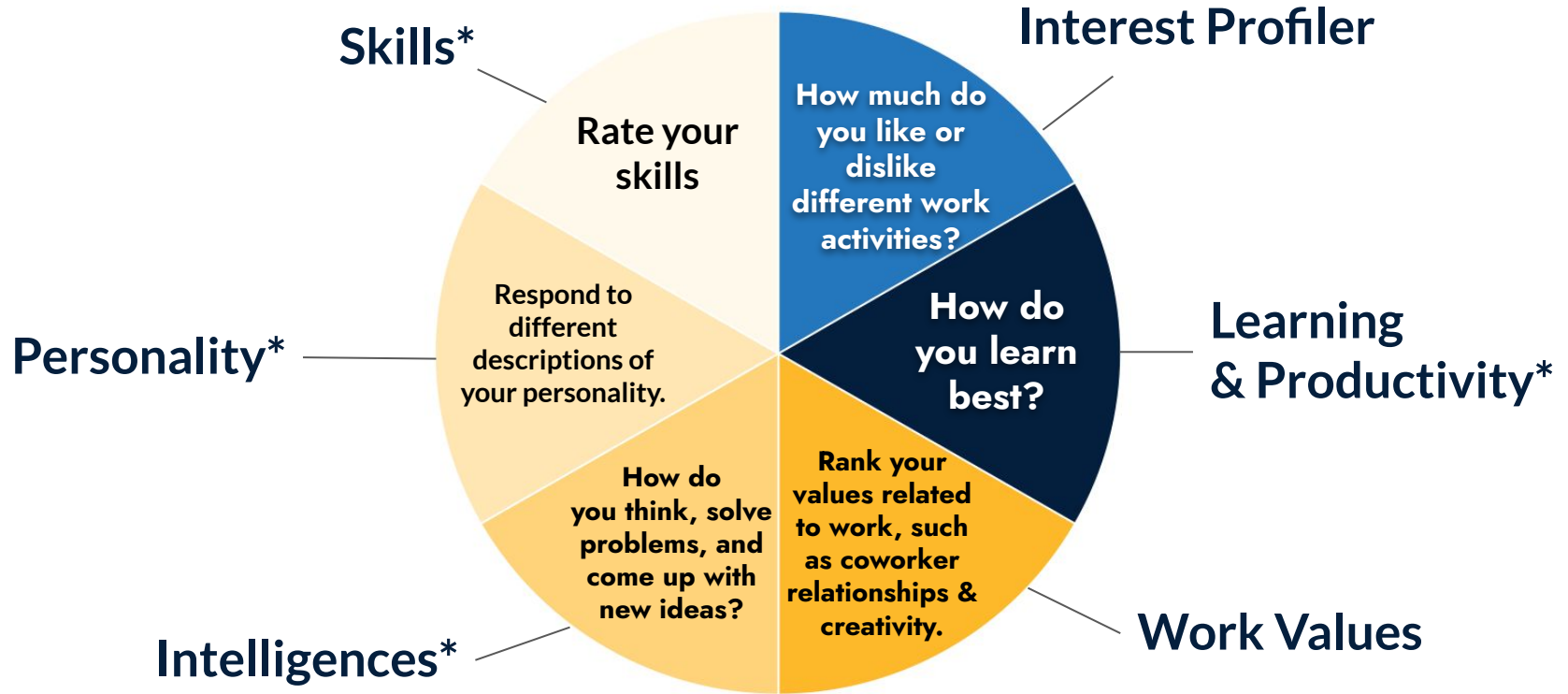
CALIFORNIA
COLLEGES *.edu*



The Official College & Career Planning
Platform of the State of California



Career Assessments



*Assessments allow for three maximum attempts.



Career Search Tool

Our career search tool helps students find the right career path by figuring out what they want to be and what it will take for them to get there.

CaliforniaColleges.edu allows students to:

- ▶ Explore careers that match their interests.
- ▶ Learn what careers involve.
- ▶ See what kind of pay and growth potential jobs offer.
- ▶ Understand what education and skills they will need to pursue their career of choice.

The screenshot shows the 'Career Search Tool' interface. At the top, a dark header contains the title 'Career Search Tool' and a brief description: 'Explore careers that match your interests. Find careers by using the keyword search or the Industry and Bright Outlook filters. To learn more about our career data, see [College, Major, and Career Data Sources](#).' Below the header, there are three search sections. The first section has a text input field with 'Scientist' and a blue 'Search' button. The second section has a dropdown menu labeled 'Select Industry' and a blue 'Search' button. The third section has a dropdown menu labeled 'Select Bright Outlook Occupation' and a blue 'Search' button. At the bottom left, it says 'Results 179'. At the bottom right, there is a dark button labeled 'Compare'. A small 'Compare' button with an information icon is also visible at the bottom left of the results area.











Top Careers

In My Career Plan, a **Top Careers** tab will appear next to the Assessment tab. This new tab will display a **curated list of the student's top 20 careers** based on their most recent results from Interest Profiler, Skills, and Work Values.

See how your interests, skills, and work values connect to careers. The list shows the careers that match with your most recent career assessment results. **Below you'll find just the top 20 overlapping careers.** If you'd like to see a full list of matching careers for each individual assessment, click on the Assessments tab and review the individual assessment.

Compare

Compare 	Career	Interest Profiler	Skills	Work Values	Favorites
<input type="checkbox"/>	Special Effects Artists and Animators				
<input type="checkbox"/>	Makeup Artists, Theatrical and Performance				



Self-Guided Exploration: The Student Experience

Middle School Students:

Username:

6a@demo.edu

7a@demo.edu

8a@demo.edu

Password:

Pass12345

High School Students:

Username:

9a@demo.edu

10a@demo.edu

11a@demo.edu

demo1@demo.edu

Password:

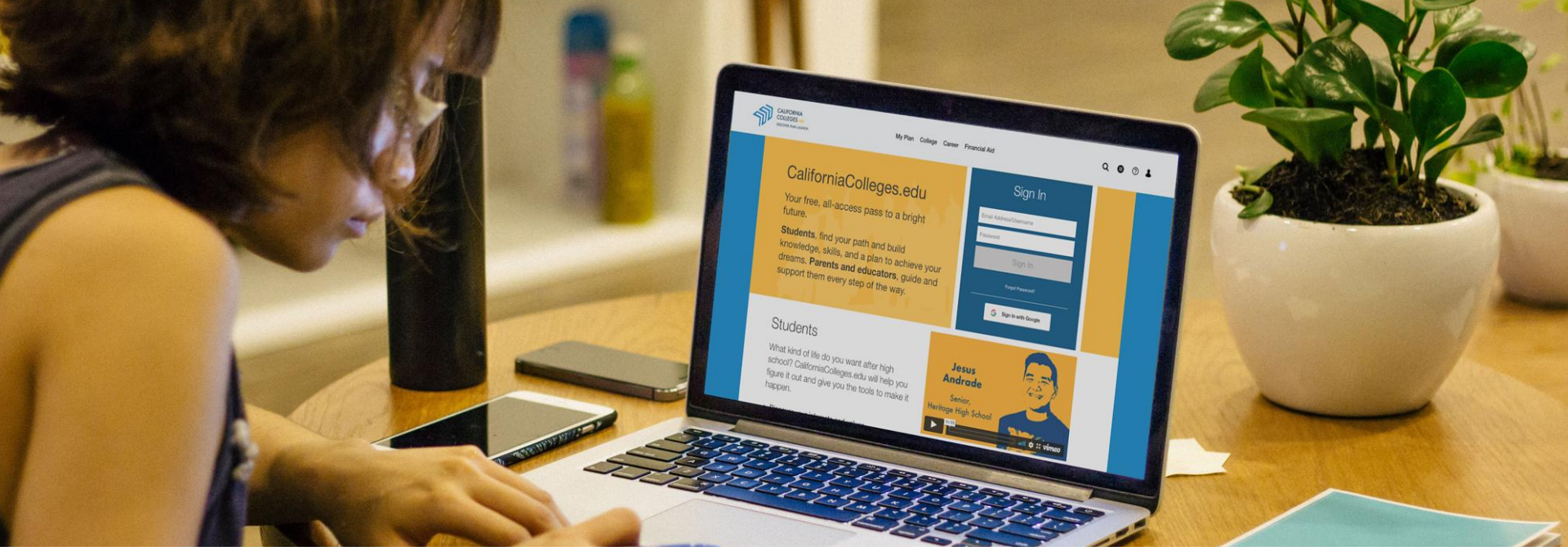
Pass12345

Explore

- ▶ **Navigate to:**
 - Career Tab
 - My Career Plan
- ▶ **Click Around:**
 - Interest Profiler
 - Career List
 - Top Careers
 - Career Search Tool

Consider

- ▶ How can you use an **educator lesson plan** to support students with completing the career assessments?
- ▶ How can you utilize career assessments to provide **targeted intervention** with students?



Demonstration

Educator Reporting Tools



CALIFORNIA
COLLEGES.*edu*



The Official College & Career Planning
Platform of the State of California

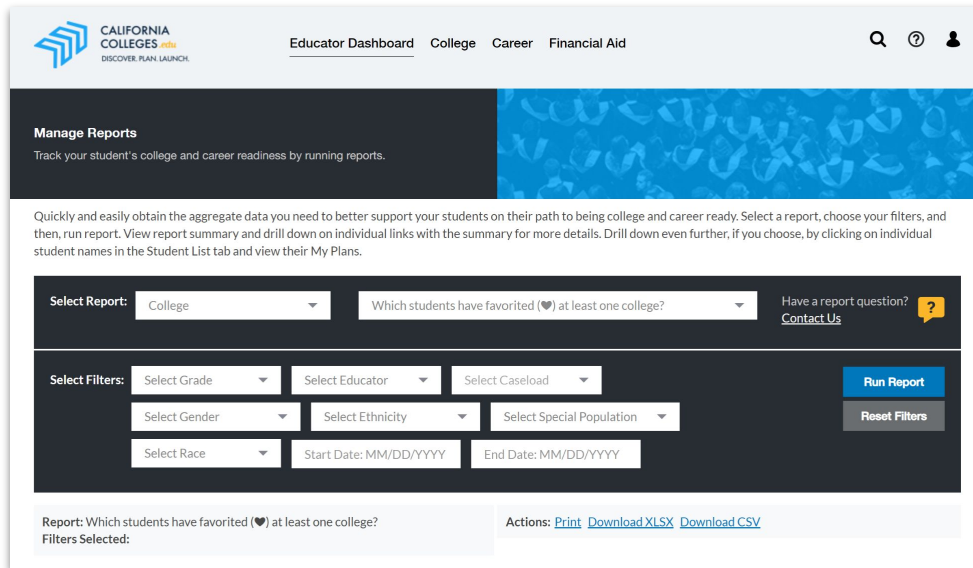
Reporting Tools for Educators

Educators can run reports to monitor student progress on their activities on CaliforniaColleges.edu.

Our **reports** help educators plan collective efforts and/or provide targeted intervention by showing students' progress.

How to Run Reports:

- ▶ Select a report **Category**
- ▶ Select a report **Name**
- ▶ Click **Run Report**.



The screenshot shows the 'Educator Dashboard' interface. At the top, there's a navigation bar with the California Colleges.edu logo, the text 'Educator Dashboard', and links for 'College', 'Career', and 'Financial Aid'. A search icon, help icon, and user profile icon are on the right. Below the navigation bar, there's a 'Manage Reports' section with a blue background and the text 'Track your student's college and career readiness by running reports.' A descriptive paragraph follows: 'Quickly and easily obtain the aggregate data you need to better support your students on their path to being college and career ready. Select a report, choose your filters, and then, run report. View report summary and drill down on individual links with the summary for more details. Drill down even further, if you choose, by clicking on individual student names in the Student List tab and view their My Plans.' The main form area has a 'Select Report:' dropdown set to 'College' and a text input field containing 'Which students have favorited (♥) at least one college?'. To the right of the text input is a 'Have a report question? Contact Us' link and a question mark icon. Below this, there's a 'Select Filters:' section with several dropdown menus: 'Select Grade', 'Select Educator', 'Select Caseload', 'Select Gender', 'Select Ethnicity', 'Select Special Population', and 'Select Race'. There are also input fields for 'Start Date: MM/DD/YYYY' and 'End Date: MM/DD/YYYY'. To the right of the filters is a blue 'Run Report' button and a grey 'Reset Filters' button. At the bottom, there's a summary line: 'Report: Which students have favorited (♥) at least one college?' and 'Filters Selected:'. To the right of this line are links for 'Actions: Print', 'Download XLSX', and 'Download CSV'.

Moving Forward



CALIFORNIA
COLLEGES *.edu*



The Official College & Career Planning
Platform of the State of California



Next Steps

1

Determine who will be a part of your implementation team.

2

Develop a 2024-2025 scope and sequence for registration and implementation.

3

Share your implementation plan with all stakeholders who will support.

4

Inform district POC of additional support needed.

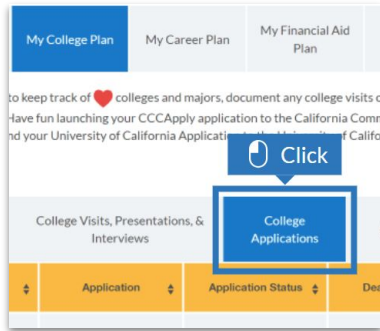




CALIFORNIA
COLLEGES.edu
DISCOVER. PLAN. LAUNCH.

The Resource Hub

We're here to help! Learn more and get the support you need.



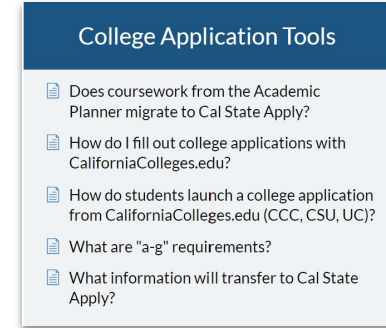
Interactive Tutorials

Click-by-click guides for students, educators, and parents!



Digital Media Toolkits

Templated social media posts, newsletter blurbs, emails, and more.



Help

Answers to frequently asked questions.

[CaliforniaColleges.edu/resourcehub](https://californiacolleges.edu/resourcehub)





CALIFORNIA
COLLEGES.edu

DISCOVER. PLAN. LAUNCH.

Training Survey



Thank You!

