

The California College Guidance Initiative

CSU Regional Convening for Northern California and Bay Area

April 22, 2024



CALIFORNIA
COLLEGES.edu



The Official College & Career Planning
Platform of the State of California



Heather Allen
Chief Programs
Officer



Darice Ingram
Director
Northern CA/Bay Area



CALIFORNIA
COLLEGES.edu
DISCOVER. PLAN. LAUNCH.

California College Guidance Initiative

Who We Are

- ▶ **Manager of CaliforniaColleges.edu**, the State of California's official college and career planning platform.
- ▶ A **legislatively-designated**, authorized service provider to all California school districts ([California Education Code 60900.5](#)).
- ▶ A crucial component of **California's Cradle-to-Career Data System**, as established by AB 132.

Who We Are Not

- ▶ A vendor.
- ▶ A grant-funded program.



Our Role in the Cradle-to-Career Data System

CaliforniaColleges.edu is a crucial component of the C2C Data System.

AB 132 outlines specific steps in order to implement the Cradle-to-Career (C2C) Data System and realize its objectives, which include:

- ▶ Making CaliforniaColleges.edu tools and services **free to all California school districts serving 6-12th grade students**, with a goal of full participation by June 30, 2026.
- ▶ Designating CaliforniaColleges.edu as the **preferred starting point for all applications to California public colleges (CCC, CSU, UC), FAFSA, and CADAA.**

Visit the Cradle-to-Career Website



"It's on us to make it easy for students to navigate education and job choices.

The Cradle-to-Career system provides the data and support infrastructure that will make it possible for every California student to thrive."

— Governor Gavin Newsom



The Tools on CaliforniaColleges.edu



The State of California's official college and career planning platform

We provide students with:



Career Exploration

College and Major Search

CSU and UC Eligibility Tools

Financial Aid Lessons

College and Financial Aid
Application Integrations

We provide educators with:



Data Alignment Support

"a-g" Progress Monitoring

College and Financial Aid
Application Tracking

Reporting Tools
to Support Timely and
Intentional Intervention

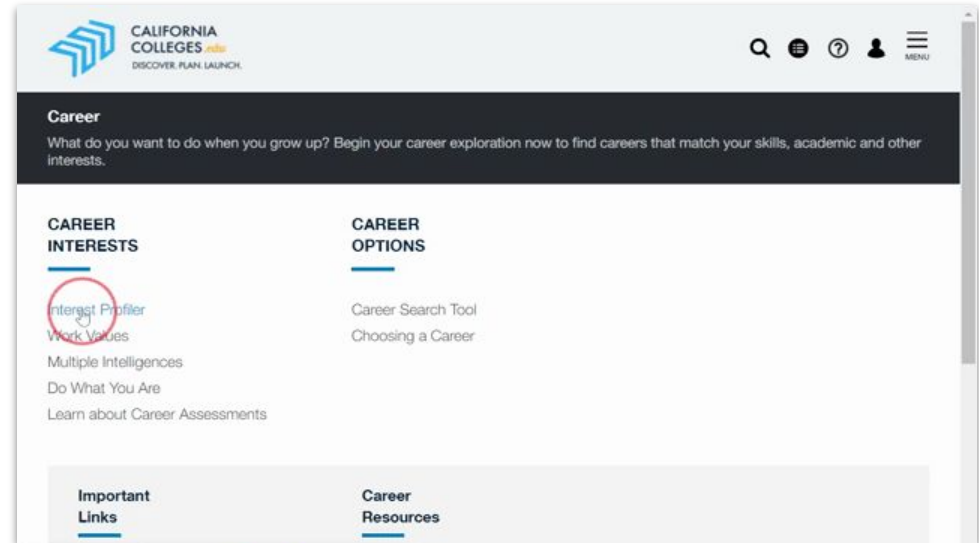


Career Assessments

Our Career Assessments can help students identify their values, interests, learning styles, and personalities and learn how they can connect to fulfilling careers.

Our assessments include:

- ▶ Interest Profiler (All Students)
- ▶ Learning & Productivity (Middle School Students)
- ▶ Intelligences (High School Students)
- ▶ Personality (High School Students)
- ▶ Skills (High School Students)
- ▶ Work Values Survey (High School Students)





Career Search Tool

Our Career Search Tool helps students find the right career path by figuring out what they want to be and what it will take for them to get there.

CaliforniaColleges.edu allows students to:

- ▶ Explore careers that match their interests.
- ▶ See what kind of pay and growth potential jobs offer.
- ▶ Tie career assessment results to career pathways, majors, and colleges.
- ▶ Understand what education and skills they will need to pursue their career of choice.

Career Search Tool
Explore careers that match your interests. Find careers by using the keyword search or the Industry and Bright Outlook filters. To learn more about our career data, see [College, Major, and Career Data Sources](#).

Scientist

Select Industry

Select Bright Outlook Occupation

Results 179

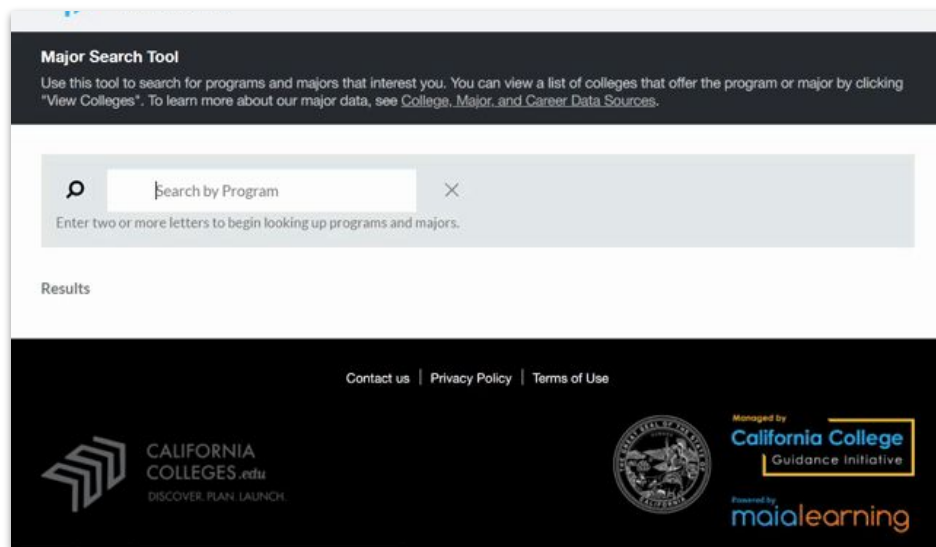
Compare

College and Major Search Tools

Our College and Major Search Tools allow students to find what majors will help them achieve their career goals and what colleges best meet their needs.

Our **Major Search Tool** allows students to discover programs and majors that interest them, learn more about what they involve, and find colleges that offer them.

Our **College Search Tool** helps students find the best colleges in California and across the country, based on the factors that matter most to them.

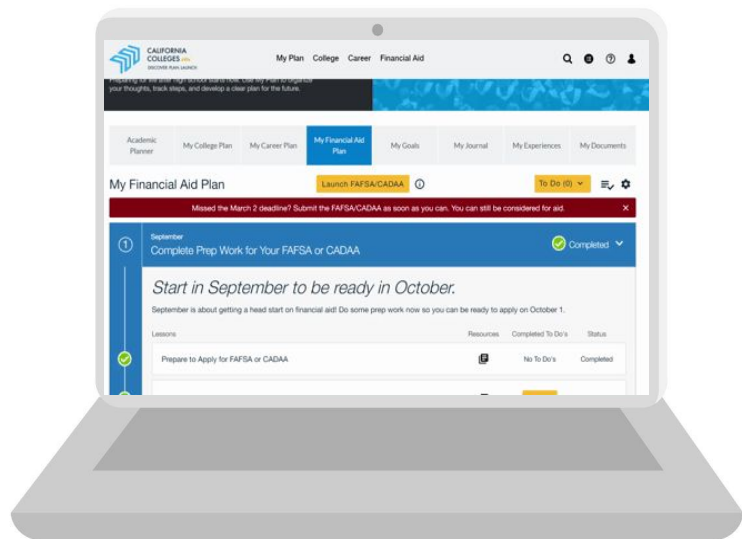


The screenshot shows the 'Major Search Tool' interface. At the top, it says 'Major Search Tool' and provides instructions: 'Use this tool to search for programs and majors that interest you. You can view a list of colleges that offer the program or major by clicking "View Colleges". To learn more about our major data, see [College, Major, and Career Data Sources](#).' Below this is a search bar with a magnifying glass icon on the left and a close 'X' icon on the right. The placeholder text is 'Search by Program'. Below the search bar, it says 'Enter two or more letters to begin looking up programs and majors.' Underneath the search bar is a section labeled 'Results'. At the bottom of the interface, there are links for 'Contact us', 'Privacy Policy', and 'Terms of Use'. The footer includes the California Colleges.edu logo, the California State Seal, and logos for 'Managed by California College Guidance Initiative' and 'Powered by maialearning'.

Financial Aid Tools

Our Financial Aid Tools offer a sequence of lessons that can be used with students to learn about the cost of college and how financial aid can help to pay for it.

In **Grade 12**, the lessons help students prepare for FAFSA/CADAA, launch their FAFSA or CADAA application, and walks them through the steps to secure aid.





CSU and UC Eligibility Tools for Students

Students in Partner Districts can use CSU and UC Eligibility Tools to continuously progress monitor their GPA and “a-g” eligibility.

The screenshot displays the Educator Dashboard on the California Colleges.edu website. The top navigation bar includes links for Educator Dashboard, College, Career, and Financial Aid. The main content area is titled "Academic Plan: CCC Demo" and includes a description: "Keep track of your completed classes, grades earned, and also plan for high school classes using your Academic Plan." Below this is a horizontal menu with tabs for Academic Planner, My College Plan, My Career Plan, My Financial Aid Plan, My Goals, My Journal, My Experiences, and My Documents. The Academic Planner tab is selected. Below the menu, a paragraph explains that CSU uses three factors to determine eligibility: graduation from high school, completion of "a-g" courses, and grades achieved in a-g courses and test scores on college entrance exams. Below this paragraph is another horizontal menu with tabs for Academic Planner, California Community Colleges, CSU Eligibility, UC Eligibility, and CSU Application Info. The CSU Eligibility tab is selected. This tab displays two main sections: "CSU GPA" and "Your 'a-g' Progress for CSU". The CSU GPA section shows a green circle with the number 3.35 and text stating that the user is currently meeting the minimum GPA requirement of 2.0 or above. The "Your 'a-g' Progress for CSU" section shows a red target icon and text stating that the user is missing the following number of years of "a-g" courses: 1. It also mentions that the user appears to not be making progress toward completing courses recommended for their grade level in the following subject areas: B, D, E, F.

CSU GPA

3.35

You are currently meeting the minimum GPA requirement of 2.0 or above. Your CSU GPA reflects "a-g" coursework submitted by your school district completed in 10th, 11th, and 12th grades, including the summers following 9th, 10th, and 11th grades.

Courses that have UC Honors Approved under the title

Your "a-g" Progress for CSU

Based upon successful completion of coursework this term, for your grade level, you are missing the following number of years of "a-g" courses: 1

You appear to not be making progress toward completing courses recommended for your grade level in the following subject areas: B, D, E, F

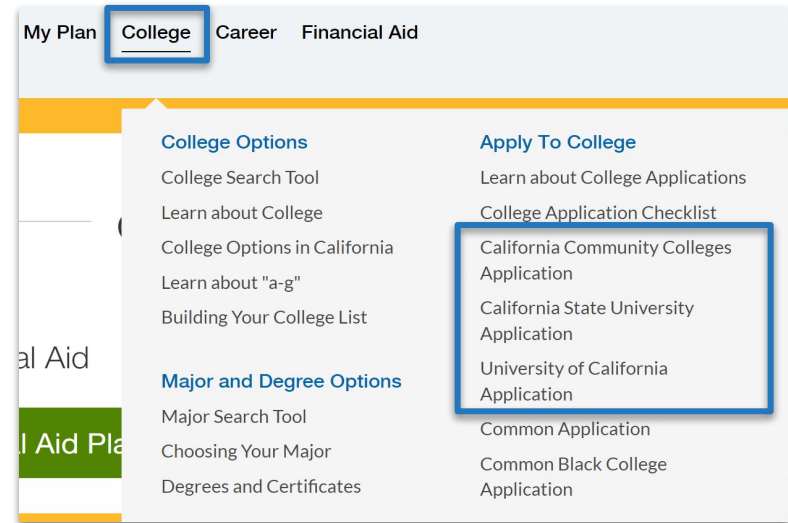


Launching College Applications

Students can launch applications to all of California's public higher education systems –

- ▶ **116** California Community Colleges
- ▶ **23** California State University campuses
- ▶ **9** University of California campuses

...all in one place.





CALIFORNIA
COLLEGES.edu
DISCOVER. PLAN. LAUNCH.

What is CaliforniaColleges.edu?

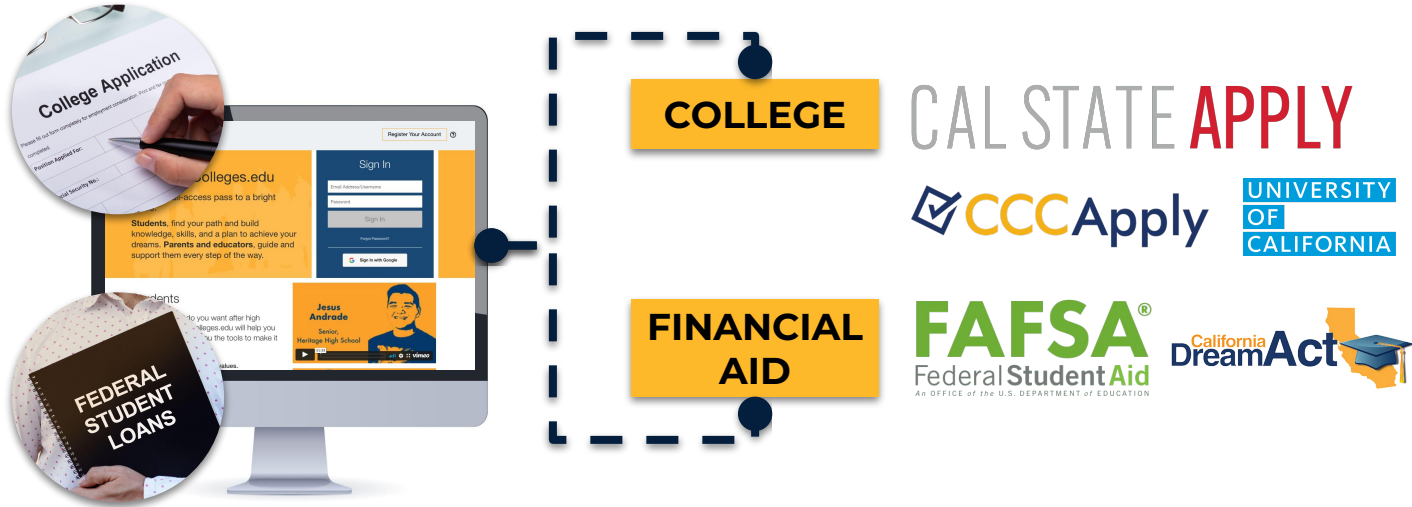




CALIFORNIA
COLLEGES.edu
DISCOVER. PLAN. LAUNCH.

Uniquely Designed for California

- ▶ **We partner with K-12 districts** to bring high school transcript data to CaliforniaColleges.edu.
- ▶ **We connect California systems**, including integrations with all three public higher education systems (**CCC, CSU, UC**) and the California Student Aid Commission (**CSAC**).





The diagram consists of two horizontal blue bars. The top bar is labeled "Student Information" and has a diamond-shaped icon on its left end and a right-pointing arrow on its right end. The bottom bar is labeled "Application Status" and has a left-pointing arrow on its left end and a diamond-shaped icon on its right end. The diamond icons are positioned directly opposite each other, suggesting a bidirectional relationship or data exchange between the two systems.



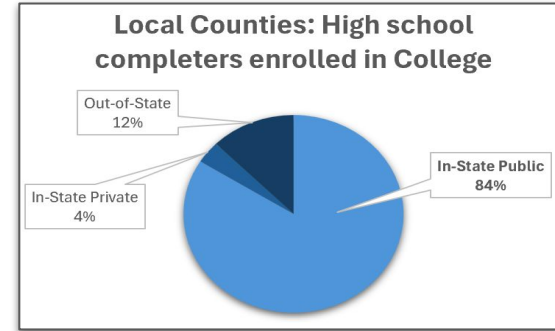
CaliforniaColleges.edu is managed by the [California College Guidance Initiative](#). © 2024 California College Guidance Initiative. All rights reserved.



Why It Matters

Most California high school students will attend a California public higher education institution:

According the most recent [DataQuest College-Going Rate report](#), **84% of high school completers** from local counties who **enrolled in college** did so **at a UC, CSU or CCC**.



Report Totals

Name	High School Completers	High School Completers Enrolled in College	Enrolled In-State				Enrolled Out-Of-State	
			University of California	California State University	California Community College	Private 2- and 4- Year College	4-Year College (Public/Private)	2-Year College (Public/Private)
Amador	303	169	7	22	113	6	19	2
Colusa	328	181	15	24	117	1	21	3
El Dorado	2273	1506	111	162	819	52	340	22
Nevada	1081	445	32	39	301	9	58	6
Placer	5615	4161	315	504	2431	164	702	45
Sacramento	17,062	11,016	1111	2032	6411	424	923	115
Sierra	31	21	1	2	7	0	6	5
Solano	4,230	2472	219	345	1619	66	187	36
Yolo	2,201	1480	235	231	764	62	177	11

Filters Enabled:

College Enrollment Timeframe: 16 Months



CALIFORNIA
COLLEGES.edu
DISCOVER. PLAN. LAUNCH.

CCGI Partner Districts

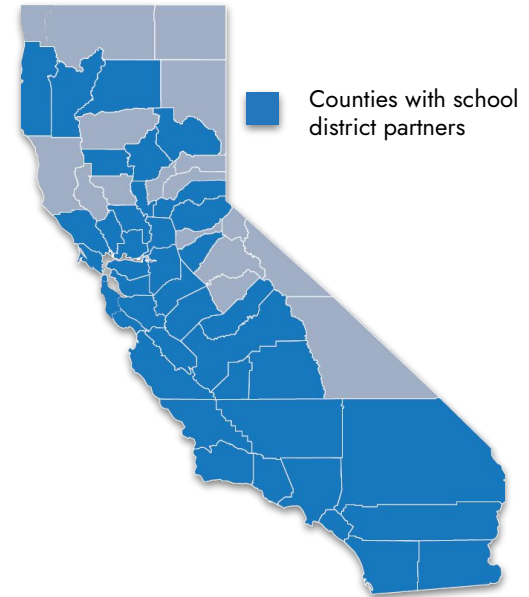
More than 50% of California's high school students are enrolled in a school district that has partnered with CCGI.

Our Partner Districts include over **200 school districts** and serve more than **1 million 9th-12th grade students** in California.

And each year, our partner list continues to grow!

▼ **See who our Partner Districts are** ▼

californiacolleges.edu/learnmore/list-of-partner-districts/





CCGI Districts in the Sacramento State Local Service Area

► **Partner** ► **In Contracting** ► **Non-Partner**

Sacramento County

- Elk Grove Unified School District
- Folsom-Cordova Unified School District
- Natomas Unified School District
- Sacramento City Unified School District
- San Juan Unified School District
- Twin Rivers Unified School District
- Center Joint Unified School District
- Galt Joint Union High School District
- River Delta Joint Unified School District

Amador County

- Amador County Unified School District

Nevada County

- Nevada Joint Union High School District

Placer County

- Placer Union High School District
- Rocklin Unified School District
- Roseville Joint Union High School District
- Western Placer Unified School District
- Tahoe-Truckee Unified School District

El Dorado County

- El Dorado Union High School District
- Black Oak Mine Unified
- Lake Tahoe Unified

Colusa County

- Colusa Unified School District
- Maxwell Unified School District
- Pierce Joint Unified School District
- Williams Unified School District

Yolo County

- Woodland Joint Unified School District
- Davis Joint Unified School District
- Esparto Unified School District
- Washington Unified School District
- Winters Joint Unified School District

Sierra County

- Sierra-Plumas Joint Unified School District

Solano County

- Vacaville Unified School District
- Vallejo City Unified School District
- Benicia Unified
- Dixon Unified School District
- Fairfield-Suisun Unified School District
- Travis Unified School District



Partnership With CCGI

Partner Districts have a formal data-sharing agreement (MOU) with CCGI in order to bring their high school transcript data to CaliforniaColleges.edu.

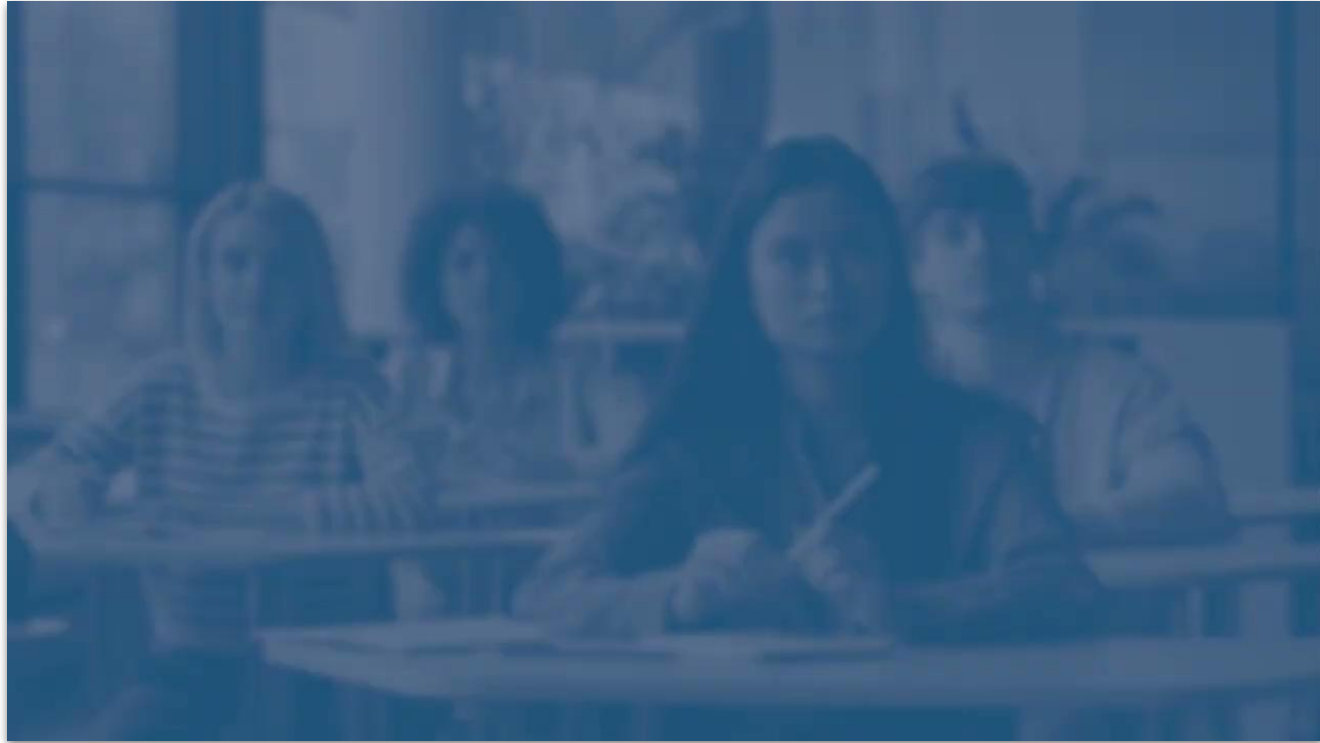
Unique features for Partner Districts include:

- ▶ **“a-g” Alignment Support** for districts to ensure that students get correct “a-g” credit for high school courses and grades in their college applications.
- ▶ **CSU and UC Eligibility Tools** that allow students to see their progress towards meeting the minimum requirements for admission to a CSU and UC.
- ▶ The ability to **import verified transcript data** to their Cal State Apply application and UC Application (beginning Fall 2024).



CALIFORNIA
COLLEGES.edu
DISCOVER. PLAN. LAUNCH.

A Partner District Example

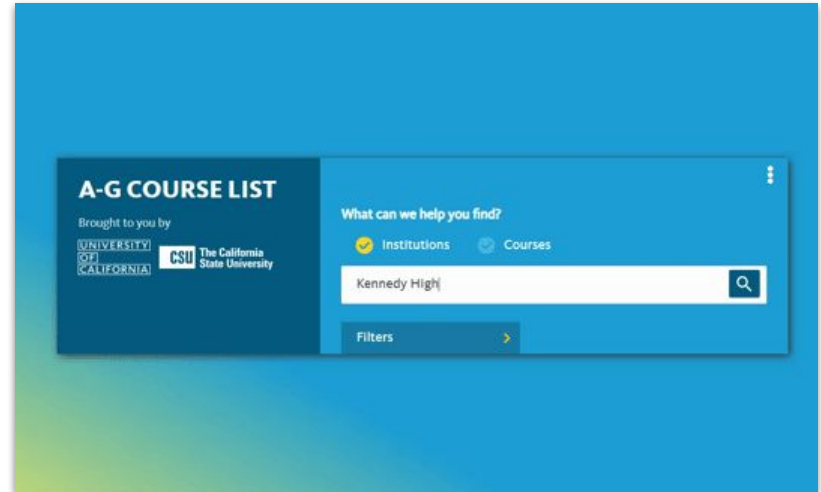




“a-g” Alignment Support

CaliforniaColleges.edu matches the course grade records provided by school districts against the Course Management Portal (CMP).

- ▶ The CMP course list is what determines which courses fulfill an “a-g” subject area.
- ▶ CaliforniaColleges.edu uses the official CMP course list for each school to **verify the transcript data** shared by districts.
- ▶ CaliforniaColleges.edu helps educators identify and resolve issues with their CMP list that may impact eligibility for students:
 - ▶ CaliforniaColleges.edu Report: Which district courses are flagged as “a-g” but do not match against the CMP?





CALIFORNIA
COLLEGES.edu
DISCOVER. PLAN. LAUNCH.

CMP-Verified Courses and Grades in CaliforniaColleges.edu

https://www.californiacolleges.edu

Academic Planner California Community Colleges **CSU Eligibility** UC Eligibility CSU Application Info

Verified "a-g" course with a grade of C- or better

Verified "a-g" course with a grade of D or lower

Enrolled or planned courses

Subject area has been satisfied

C. Mathematics 4 years recommended 3 years required 3.5 years completed Higher level courses have satisfied some lower courses.	MATH I A S1 2020-21 Completed C	MATH II A S1 2021-22 Completed D	OLR MATH I B SS2 2021-22 Completed C	MRWC A S1 2023-24 Enrolled
		MATH II B S2 2021-22 Completed C	MATH III A S1 2022-23 Completed B+	
			MATH III B S2 2022-23 Completed A	



Validation for CMP-Verified Courses

https://www.californiacolleges.edu

Academic Planner | California Community Colleges | **CSU Eligibility** | UC Eligibility | CSU Application Info

Verified "a-g" course with a grade of C- or better | **Verified "a-g" course with a grade of D or lower** | **Enrolled or planned courses** | **Subject area has been satisfied**



C. Mathematics 4 years recommended 3 years required 3.5 years completed Higher level courses have satisfied some lower courses.	MATH I A S1 2020-21 Completed C	MATH II A S1 2021-22 Completed D	OLR MATH I B SS2 2021-22 Completed C	MRWC A S1 2023-24 Enrolled
		MATH II B S2 2021-22 Completed C	MATH III A S1 2022-23 Completed B+	
			MATH III B S2 2022-23 Completed A	

In this example, a Grade of D in Math IIA has been validated by higher level courses and grades.



Courses That Are Not CMP-Verified

Courses in **yellow** are those where the district indicates the course as meeting an “a-g” subject area, but the course **cannot be verified** against the CMP.

	 Not a verified "a-g" course	 Course listed as "a-g" by school, but not found in UC CMP database
Additional Coursework Unmatched "a-g" Courses Other High School Graduation Requirements Community College Preparatory Courses CTE Pathways Courses	Health Ed S1 2020-21 Completed	A+
	History of Rock S1 2020-21 Completed	A
	*PE 1 S2 2020-21 Completed	A+



CALIFORNIA
COLLEGES.edu
DISCOVER. PLAN. LAUNCH.

Cal State Apply Course Import



CALIFORNIA
COLLEGES.edu
DISCOVER. PLAN. LAUNCH.



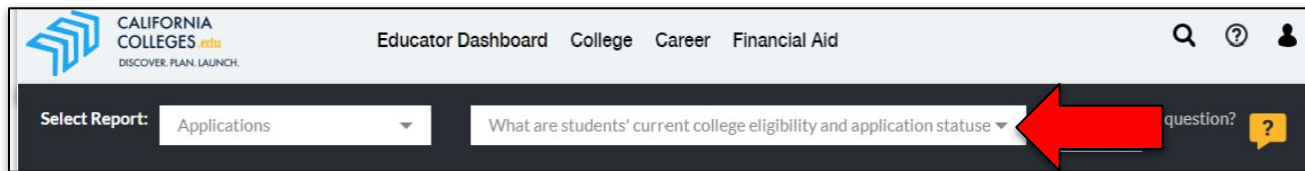
CaliforniaColleges.edu Course Import to Cal State Apply

What It Does	What It Does NOT Do
Saves time: Can <u>significantly reduce</u> the time required to complete Cal State Apply applications.	It does NOT replace the need to review all course records for accuracy prior to Cal State Apply application submission.
Reduces errors: Verifies high school course records against the CMP and pre-populates that information into a Cal State Apply application.	
Supports intentional review: Allows counselors and college access staff to identify and focus time and energy on students records that are the most complex.	It does NOT replace the need for counselors and/or college access staff to support students.

School-Level and District-Level Data

View application statuses to all CCC, CSU and/or UC campuses – for all applications connected to CaliforniaColleges.edu – updated nightly.

- ▶ The **“What are students’ current college eligibility and application statuses”** report offers a single, downloadable file to help you identify students for intervention and/or opportunities:



- ▶ Filter this report in multiple ways to answer questions, such as:
 - Which students are a-g eligible, but have not applied?
 - Which students have applications in progress, but not yet submitted?
 - Which students have not applied to any segment?
 - Which students have applied to a specific campus?



CALIFORNIA
COLLEGES.edu
DISCOVER. PLAN. LAUNCH.

Implementing Equity-Focused State Policies

Districts can use the data and reporting tools on CaliforniaColleges.edu to make it easier to implement and comply with equity-focused state policies.



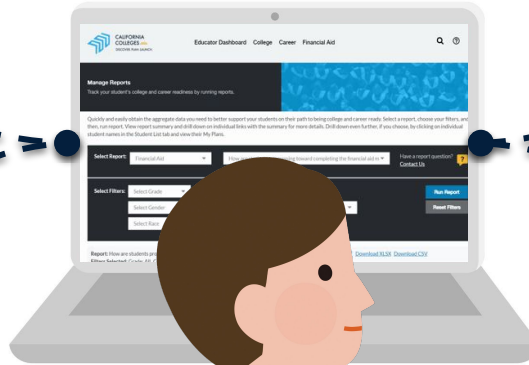
AB 132

Cradle-to-Career
Data System



AB 130

A-G Completion
Improvement Grant
Program



AB 469

Universal FAFSA/CADAA
for Graduating Seniors



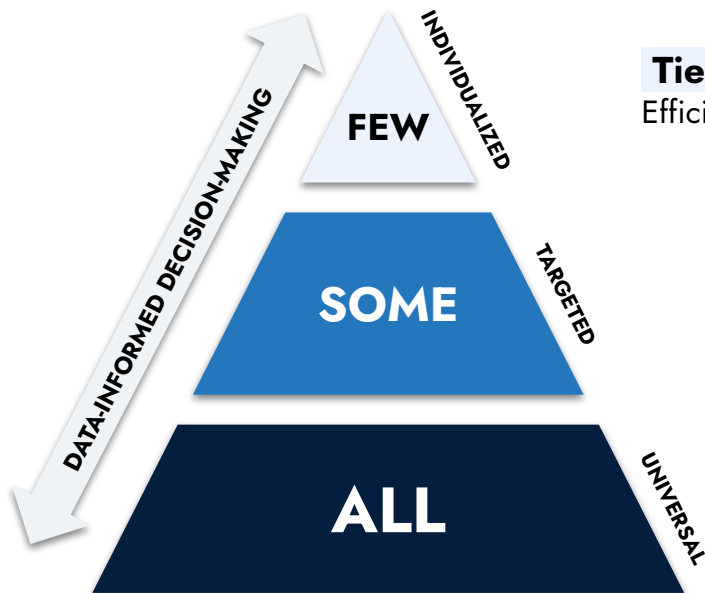
AB 2015

Financial Aid Information
Prior to Grade 12



Within a MTSS Framework

CaliforniaColleges.edu can be leveraged to support Tier 1 learning for all students, while increasing efficiency and ability for educators to strategically intervene with those who need support at Tier 2 and 3.



Tier 3 – Intensive Interventions

Efficiencies at Tier 1 and 2, free time for educators to provide 1:1 support.

Tier 2 – Targeted Interventions

Educator tools and reports on CaliforniaColleges.edu allow for targeted interventions with individuals or groups of students.

Tier 1 – Universal Interventions

CaliforniaColleges.edu is the state's official college and career planning platform, designed for all 6th-12th grade students.



Alignment to District Goals and Priorities

Through strategic implementation, CaliforniaColleges.edu can support with:

- ▶ Expanding career/college exploration and knowledge for all students.
- ▶ Increasing “a-g” completion for high school students.
- ▶ Reducing the burden on students when applying to college through CMP course alignment.
- ▶ Increasing college application support and completion for all students.
- ▶ Increasing CSU and UC application support and completion for CSU/UC-eligible students.
- ▶ Expanding awareness of financial aid and increasing financial aid completion.

How do these align to your site/district goals, priorities or initiatives?

LCAP



SPSA

Implementation Support

CCGI has team members dedicated to serving the Northern California region:

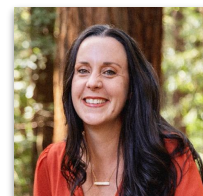
Our **Engagement and Implementation** team leads outreach, training and implementation support for CaliforniaColleges.edu.



Darice Ingram
Director



Ying Lo-Khang
Senior Manager



Shannon Coskran
Senior Manager



Olivia Lopes
Training Manager

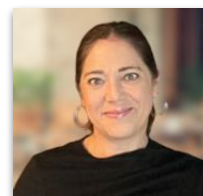
Our **Data Services** and **Technical Assistance** teams help districts bring their data files to CaliforniaColleges.edu and support CMP alignment.



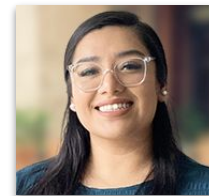
Joshua Davis
District Data
Support Analyst



Elizabeth Love
District Data
Support Analyst



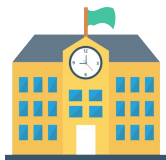
Abigail Bailey
Technical Assistance
Manager



Dulce Grant
Technical
Assistance Manager

Not Yet a Partner?

We partner with public school districts that serve high school students.



To learn about bringing CaliforniaColleges.edu to your district, visit:
californiacolleges.edu/learnmore/partnership/



Share your interest and enthusiasm about CaliforniaColleges.edu with your district leader and/or partnership decision-maker.



When your district is ready to explore partnership, email us at:
CommunityEngagement@CaliforniaColleges.edu

Questions?



CALIFORNIA
COLLEGES.*edu*



The Official College & Career Planning
Platform of the State of California



Appendices

- ▶ **[Introducing CaliforniaColleges.edu](#)** — View this joint announcement from the California Department of Education, California Cradle-to-Career Data System, University of California, California State University, California Community Colleges, and California Student Aid Commission.
- ▶ **[California Education Code 60900.5](#)** — Review the Ed Code that names CCGI as an authorized provider of an institutional service to all California public school districts and that outlines the role of CaliforniaCollege.edu in the state's work to make college-going a more streamlined experience for students.
- ▶ **[AB 132 and the Cradle-to-Career Data System](#)** — Learn about AB 132 and the role of CaliforniaColleges.edu in the California Cradle-to-Career Data System.
- ▶ **[The California College Guidance Initiative](#)** — Learn more about the work and mission of CCGI, our partnerships, and team members.
- ▶ **[CCGI Newsroom](#)** — See where our work has been featured by local, state, and national media outlets, as well as numerous studies and reports that feature our approaches and impact.



CALIFORNIA
COLLEGES.edu
DISCOVER. PLAN. LAUNCH.

Additional Resources



Get On-Demand Training on How to Use CaliforniaColleges.edu
californiacolleges.edu/#/virtual-trainings-partner-districts



Visit the Resource Hub
californiacolleges.edu/resourcehub/resources/



Find Answers to Common Questions on Our Help Page
californiacolleges.edu/resourcehub/help/



Check Out Our Videos on Vimeo
vimeo.com/californiacolleges/



Contact Us Directly for Assistance
californiacolleges.edu/#/contact-us



CALIFORNIA
COLLEGES.edu
DISCOVER. PLAN. LAUNCH.

Thank You!