

# The California College Guidance Initiative

CSU Regional Convening for Northern California and Bay Area

April 18, 2024



CALIFORNIA  
COLLEGES.edu



The Official College & Career Planning  
Platform of the State of California



**Heather Allen**  
Chief Programs  
Officer



**Darice Ingram**  
Director  
Northern CA/Bay Area



CALIFORNIA  
COLLEGES.edu  
DISCOVER. PLAN. LAUNCH.

# California College Guidance Initiative

## Who We Are

- ▶ **Manager of CaliforniaColleges.edu**, the State of California's official college and career planning platform.
- ▶ A **legislatively-designated**, authorized service provider to all California school districts ([California Education Code 60900.5](#)).
- ▶ A crucial component of **California's Cradle-to-Career Data System**, as established by AB 132.

## Who We Are Not

- ▶ A vendor.
- ▶ A grant-funded program.





# Our Role in the Cradle-to-Career Data System

## CaliforniaColleges.edu is a crucial component of the C2C Data System.

AB 132 outlines specific steps in order to implement the Cradle-to-Career (C2C) Data System and realize its objectives, which include:

- ▶ Making CaliforniaColleges.edu tools and services **free to all California school districts serving 6-12th grade students**, with a goal of full participation by June 30, 2026.
- ▶ Designating CaliforniaColleges.edu as the **preferred starting point for all applications to California public colleges (CCC, CSU, UC), FAFSA, and CADAA.**

[Visit the Cradle-to-Career Website](#)



"It's on us to make it easy for students to navigate education and job choices.

The Cradle-to-Career system provides the data and support infrastructure that will make it possible for every California student to thrive."

— Governor Gavin Newsom





CALIFORNIA  
COLLEGES.edu  
DISCOVER. PLAN. LAUNCH.

# The Tools on CaliforniaColleges.edu



The State of California's official college and career planning platform

We provide students with:



Career Exploration

College and Major Search

CSU and UC Eligibility Tools

Financial Aid Lessons

College and Financial Aid  
Application Integrations

We provide educators with:



Data Alignment Support

"a-g" Progress Monitoring

College and Financial Aid  
Application Tracking

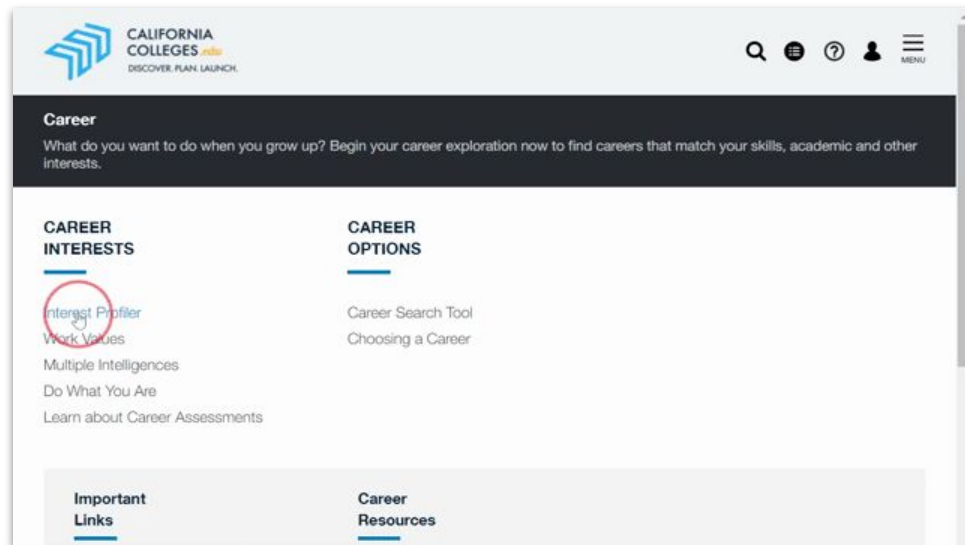
Reporting Tools  
to Support Timely and  
Intentional Intervention

# Career Assessments

**Our Career Assessments can help students identify their values, interests, learning styles, and personalities and learn how they can connect to fulfilling careers.**

## Our assessments include:

- ▶ Interest Profiler (All Students)
- ▶ Learning & Productivity (Middle School Students)
- ▶ Intelligences (High School Students)
- ▶ Personality (High School Students)
- ▶ Skills (High School Students)
- ▶ Work Values Survey (High School Students)





# Career Search Tool

**Our Career Search Tool helps students find the right career path by figuring out what they want to be and what it will take for them to get there.**

**CaliforniaColleges.edu allows students to:**

- ▶ Explore careers that match their interests.
- ▶ See what kind of pay and growth potential jobs offer.
- ▶ Tie career assessment results to career pathways, majors, and colleges.
- ▶ Understand what education and skills they will need to pursue their career of choice.

**Career Search Tool**  
Explore careers that match your interests. Find careers by using the keyword search or the Industry and Bright Outlook filters. To learn more about our career data, see [College, Major, and Career Data Sources](#).

Scientist

Select Industry

Select Bright Outlook Occupation

Results 179

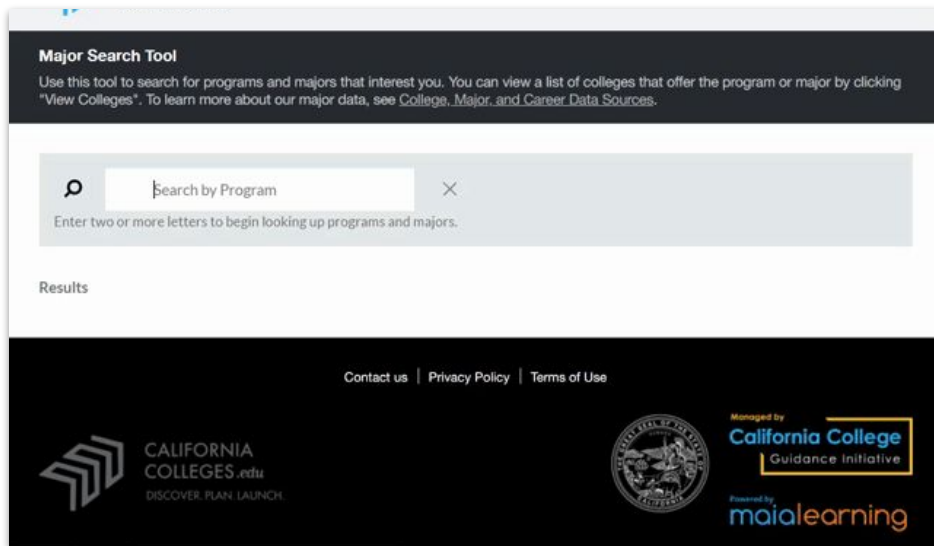
Compare

# College and Major Search Tools

**Our College and Major Search Tools** allow students to find what majors will help them achieve their career goals and what colleges best meet their needs.

Our **Major Search Tool** allows students to discover programs and majors that interest them, learn more about what they involve, and find colleges that offer them.

Our **College Search Tool** helps students find the best colleges in California and across the country, based on the factors that matter most to them.



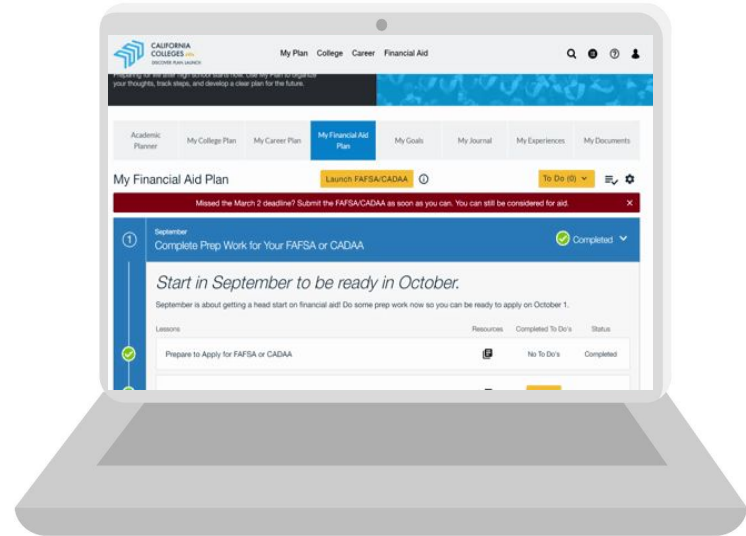
The screenshot shows the 'Major Search Tool' interface. At the top, it says 'Major Search Tool' and provides instructions: 'Use this tool to search for programs and majors that interest you. You can view a list of colleges that offer the program or major by clicking "View Colleges". To learn more about our major data, see [College, Major, and Career Data Sources](#).' Below this is a search bar with a magnifying glass icon on the left and a close 'X' icon on the right. The placeholder text is 'Search by Program'. Below the search bar, it says 'Enter two or more letters to begin looking up programs and majors.' Underneath the search bar is a section labeled 'Results'. At the bottom of the interface, there are links for 'Contact us', 'Privacy Policy', and 'Terms of Use'. The footer includes the California Colleges.edu logo, the California State Seal, and text indicating it is 'Managed by California College Guidance Initiative' and 'Powered by maialearning'.



# Financial Aid Tools

Our Financial Aid Tools offer a sequence of lessons that can be used with students to learn about the cost of college and how financial aid can help to pay for it.

In **Grade 12**, the lessons help students prepare for FAFSA/CADAA, launch their FAFSA or CADAA application, and walks them through the steps to secure aid.







# CSU and UC Eligibility Tools for Students

Students in Partner Districts can use CSU and UC Eligibility Tools to continuously progress monitor their GPA and “a-g” eligibility.

The screenshot displays the Educator Dashboard on the California Colleges.edu website. The top navigation bar includes links for Educator Dashboard, College, Career, and Financial Aid. The main content area is titled "Academic Planner: CCC Demo" and provides instructions on tracking completed classes and planning for high school classes. Below this, a horizontal menu allows users to navigate between various planning tools: Academic Planner (selected), My College Plan, My Career Plan, My Financial Aid Plan, My Goals, My Journal, My Experiences, and My Documents. A paragraph explains that the Eligibility Tool uses three factors to determine eligibility: graduation from high school, completion of "a-g" courses, and college entrance exam scores. Below the paragraph, a secondary navigation bar includes links for Academic Planner, California Community Colleges, CSU Eligibility (selected), UC Eligibility, and CSU Application Info, along with a "Back to Academic Planner" button. The main content area is divided into two sections: "CSU GPA" and "Your 'a-g' Progress for CSU". The CSU GPA section shows a current GPA of 3.35, indicating that the user is meeting the minimum requirement of 2.0 or above. The "Your 'a-g' Progress for CSU" section shows a target icon and indicates that the user is missing 1 year of "a-g" courses and is not making progress toward completing recommended courses in specific subject areas (B, D, E, F).

**CSU GPA**

You are currently meeting the minimum GPA requirement of 2.0 or above. Your CSU GPA reflects "a-g" coursework submitted by your school district completed in 10th, 11th, and 12th grades, including the summers following 9th, 10th, and 11th grades.

Courses that have UC Honors Approved under the title

**Your "a-g" Progress for CSU**

Based upon successful completion of coursework this term, for your grade level, you are missing the following number of years of "a-g" courses: 1

You appear to not be making progress toward completing courses recommended for your grade level in the following subject areas: B, D, E, F

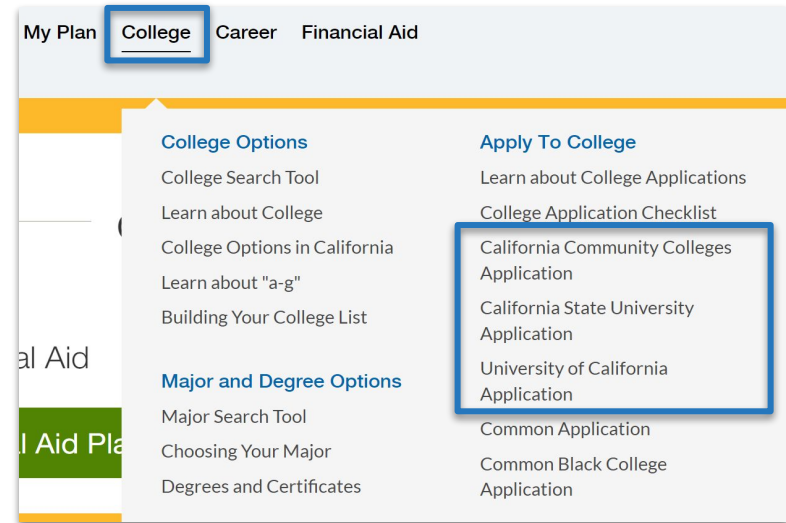


# Launching College Applications

Students can launch applications to all of California's public higher education systems –

- ▶ **116** California Community Colleges
- ▶ **23** California State University campuses
- ▶ **9** University of California campuses

...all in one place.





CALIFORNIA  
COLLEGES.edu  
DISCOVER. PLAN. LAUNCH.

# What is CaliforniaColleges.edu?

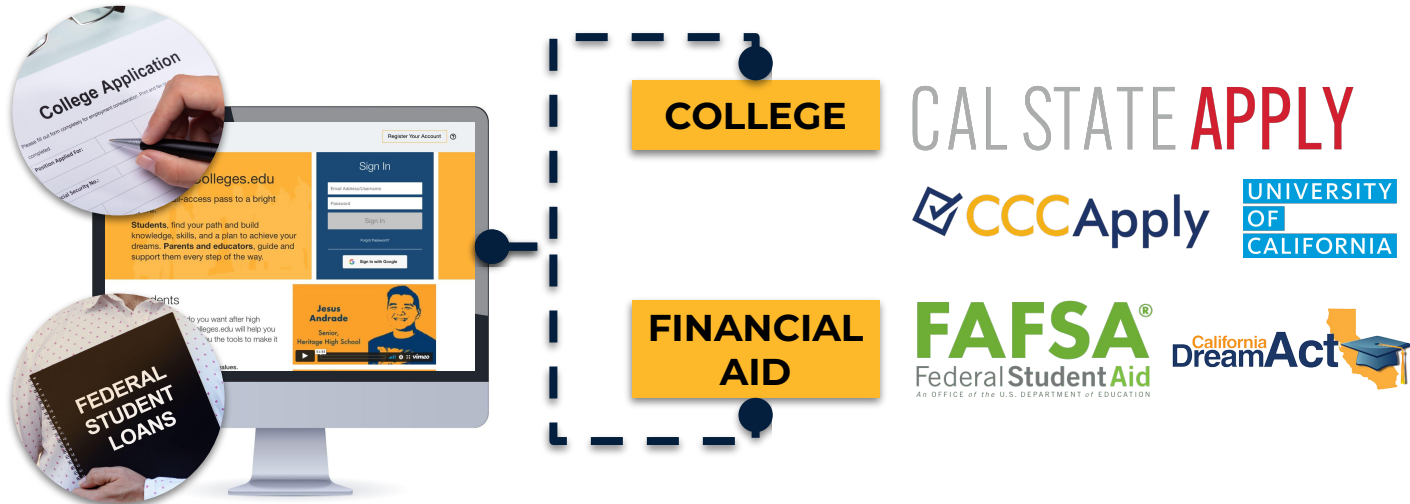
Watch “Educator Perspectives on CaliforniaColleges.edu” video at:  
**<https://vimeo.com/802903546>**



CALIFORNIA  
COLLEGES.edu  
DISCOVER. PLAN. LAUNCH.

# Uniquely Designed for California

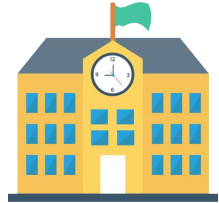
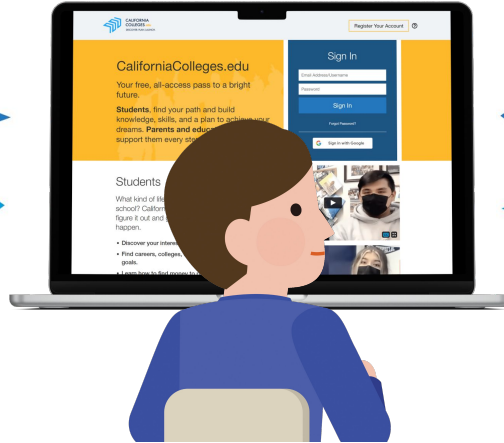
- ▶ **We partner with K-12 districts** to bring high school transcript data to CaliforniaColleges.edu.
- ▶ **We connect California systems**, including integrations with all three public higher education systems (**CCC**, **CSU**, **UC**) and the California Student Aid Commission (**CSAC**).



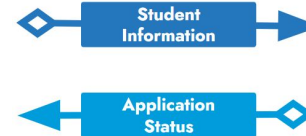
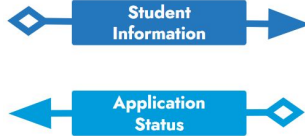


CALIFORNIA  
COLLEGES.edu  
DISCOVER. PLAN. LAUNCH.

# Connecting California's Systems



Partner District



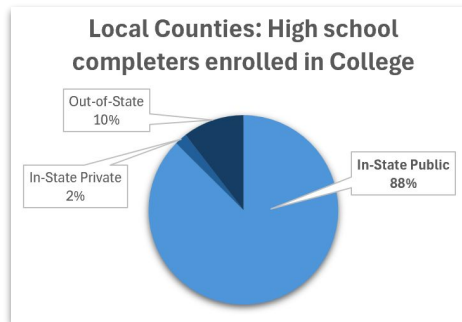
- California State University
- California Community College
- University of California



# Why It Matters

## Most California high school students will attend a California public higher education institution:

According the most recent [DataQuest College-Going Rate report](#), **88% of high school completers** from local counties who **enrolled in college** did so at a **UC, CSU or CCC**.



### Report Totals

| Name                     | High School Completers | High School Completers Enrolled in College | Enrolled In-State        |                             |                              |                                | Enrolled Out-Of-State           |                                 |
|--------------------------|------------------------|--|--------------------------|-----------------------------|------------------------------|--------------------------------|---------------------------------|---------------------------------|
|                          |                        |  | University of California | California State University | California Community College | Private 2- and 4- Year College | 4-Year College (Public/Private) | 2-Year College (Public/Private) |
| <a href="#">Butte</a>    | 2,136                  | 1,356                                      | 53                       | 132                         | 1,034                        | 17                             | 97                              | 23                              |
| <a href="#">Glenn</a>    | 403                    | 239  | 12                       | 28                          | 183                          | 2                              | 13                              | 1                               |
| <a href="#">Lassen</a>   | 259                    | 138  | 1                        | 0                           | 109                          | 0                              | 27                              | 1                               |
| <a href="#">Modoc</a>    | 76                     | 44   | 0                        | 8                           | 28                           | 0                              | 5                               | 3                               |
| <a href="#">Plumas</a>   | 138                    | 89   | 4                        | 5                           | 64                           | 2                              | 11                              | 3                               |
| <a href="#">Shasta</a>   | 2,004                  | 1,137                                      | 59                       | 68                          | 838                          | 36                             | 129                             | 7                               |
| <a href="#">Siskiyou</a> | 402                    | 202  | 10                       | 18                          | 127                          | 7                              | 34                              | 6                               |
| <a href="#">Sutter</a>   | 1,660                  | 950  | 60                       | 91                          | 684                          | 25                             | 76                              | 14                              |
| <a href="#">Tehema</a>   | 738                    | 340  | 13                       | 18                          | 274                          | 8                              | 17                              | 10                              |
| <a href="#">Trinity</a>  | 120                    | 50   | 2                        | 4                           | 34                           | 1                              | 9                               | 0                               |
| <a href="#">Yuba</a>     | 865                    | 439  | 24                       | 51                          | 322                          | 8                              | 29                              | 5                               |

Filters Enabled:

College Enrollment Timeframe: 16 Months



CALIFORNIA  
COLLEGES.edu  
DISCOVER. PLAN. LAUNCH.

# CCGI Partner Districts

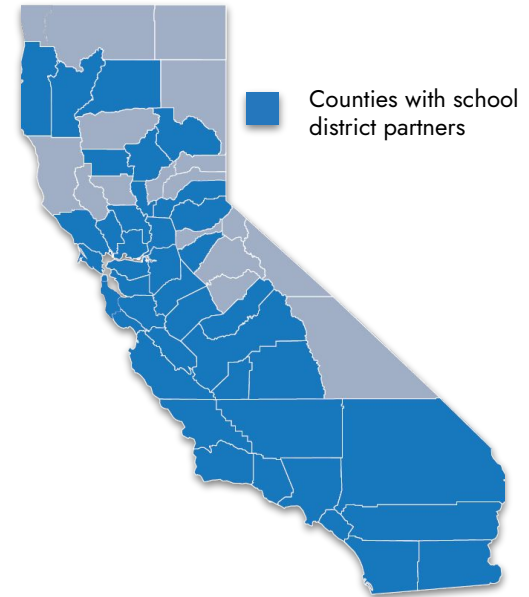
**More than 50% of California's high school students are enrolled in a school district that has partnered with CCGI.**

Our Partner Districts include over **200 school districts** and serve more than **1 million 9th-12th grade students** in California.

And each year, our partner list continues to grow!

▼ **See who our Partner Districts are** ▼

[californiacolleges.edu/learnmore/list-of-partner-districts/](https://californiacolleges.edu/learnmore/list-of-partner-districts/)





# CCGI Districts in the Chico State Local Service Area

▶ **Partner**    ▶ In Contracting    ▶ Non-Partner

## Shasta County

- ▶ **Anderson Union High School District**
- ▶ **Fall River Joint Unified School District**
- ▶ **Gateway Unified School District**
- ▶ **Shasta Union High School District**

## Butte County

- ▶ **Gridley Unified School District**
- ▶ Biggs Unified School District
- ▶ Saint Helena Unified School District
- ▶ Chico Unified School District
- ▶ Durham Unified School District
- ▶ Oroville Union High School District
- ▶ Paradise Unified School District

## Tehama County

- ▶ Corning Union High School District
- ▶ Los Molinos Unified School District
- ▶ Red Bluff Joint Union High School District

## Plumas County

- ▶ **Plumas Unified School District**

## Trinity County

- ▶ **Southern Trinity Joint Unified**
- ▶ Trinity Alps Unified School District
- ▶ Mountain Valley Unified

## Sutter County

- ▶ East Nicolaus Joint Union High School District
- ▶ Live Oak Unified School District
- ▶ Sutter Union High School District
- ▶ Yuba City Unified

## Modoc County

- ▶ Modoc Joint Unified School District
- ▶ Surprise Valley Joint Unified School District
- ▶ Tulelake Basin Joint Unified School District

## Yuba County

- ▶ Marysville Joint Unified School District
- ▶ Wheatland Union High School District

## Siskiyou County

- ▶ Butte Valley Unified School District
- ▶ Dunsmuir Joint Union High School District
- ▶ Scott Valley Unified School District
- ▶ Siskiyou Union High School District
- ▶ Yreka Union High School District

## Glenn County

- ▶ **Willows Unified School District**
- ▶ Hamilton Unified
- ▶ Orland Joint Unified
- ▶ Princeton Joint Unified School District
- ▶ Stony Creek Joint Unified

## Lassen County

- ▶ Big Valley Joint Unified School District
- ▶ Fort Sage Unified School District
- ▶ Lassen Union High School District
- ▶ Westwood Unified School District





# Partnership With CCGI

**Partner Districts have a formal data-sharing agreement (MOU) with CCGI in order to bring their high school transcript data to CaliforniaColleges.edu.**

Unique features for Partner Districts include:

- ▶ **“a-g” Alignment Support** for districts to ensure that students get correct “a-g” credit for high school courses and grades in their college applications.
- ▶ **CSU and UC Eligibility Tools** that allow students to see their progress towards meeting the minimum requirements for admission to a CSU and UC.
- ▶ The ability to **import verified transcript data** to their Cal State Apply application and UC Application (beginning Fall 2024).



# A Partner District Example

Watch “Bianca Rodriguez on the College Application Integrations”  
video at:

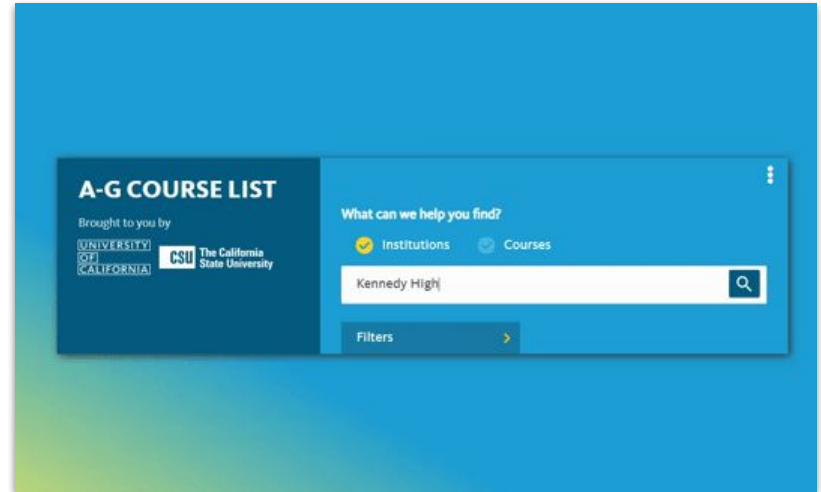
**<https://vimeo.com/913081899>**



# “a-g” Alignment Support

**CaliforniaColleges.edu matches the course grade records provided by school districts against the Course Management Portal (CMP).**

- ▶ The CMP course list is what determines which courses fulfill an “a-g” subject area.
- ▶ CaliforniaColleges.edu uses the official CMP course list for each school to **verify the transcript data** shared by districts.
- ▶ CaliforniaColleges.edu helps educators identify and resolve issues with their CMP list that may impact eligibility for students:
  - CaliforniaColleges.edu Report: Which district courses are flagged as “a-g” but do not match against the CMP?





CALIFORNIA  
COLLEGES.edu  
DISCOVER. PLAN. LAUNCH.

# CMP-Verified Courses and Grades in CaliforniaColleges.edu

https://www.californiacolleges.edu

Academic Planner | California Community Colleges | **CSU Eligibility** | UC Eligibility | CSU Application Info

Verified "a-g" course with a grade of C- or better

Verified "a-g" course with a grade of D or lower

Enrolled or planned courses

Subject area has been satisfied

|  |   |  |  |                                  |
|--|---|--|--|----------------------------------|
| <b>C. Mathematics</b><br>4 years recommended<br>3 years required<br>3.5 years completed<br><br>Higher level courses have satisfied some lower courses. | MATH I A<br>S1 2020-21<br>Completed<br><b>C</b> | MATH II A<br>S1 2021-22<br>Completed<br><b>D</b> | OLR MATH I B<br>SS2 2021-22<br>Completed<br><b>C</b> | MRWC A<br>S1 2023-24<br>Enrolled |
|  |   | MATH II B<br>S2 2021-22<br>Completed<br><b>C</b> | MATH III A<br>S1 2022-23<br>Completed<br><b>B+</b>   |                                  |
|  |   |  | MATH III B<br>S2 2022-23<br>Completed<br><b>A</b>    |                                  |



# Validation for CMP-Verified Courses

https://www.californiacolleges.edu

Academic Planner | California Community Colleges | **CSU Eligibility** | UC Eligibility | CSU Application Info

**Verified "a-g" course with a grade of C- or better** | **Verified "a-g" course with a grade of D or lower** | **Enrolled or planned courses** | **Subject area has been satisfied**



|  |  |   |   |                                  |
|--|--|---|---|----------------------------------|
| <b>C. Mathematics</b><br>4 years recommended<br>3 years required<br>3.5 years completed<br><br>Higher level courses have satisfied some lower courses. | MATH I A<br>S1 2020-21<br>Completed<br>C | MATH II A<br>S1 2021-22<br>Completed<br>D | OLR MATH I B<br>SS2 2021-22<br>Completed<br>C | MRWC A<br>S1 2023-24<br>Enrolled |
|  |  | MATH II B<br>S2 2021-22<br>Completed<br>C | MATH III A<br>S1 2022-23<br>Completed<br>B+   |                                  |
|  |  |   | MATH III B<br>S2 2022-23<br>Completed<br>A    |                                  |

**In this example, a Grade of D in Math IIA has been validated by higher level courses and grades.**



# Courses That Are Not CMP-Verified

Courses in **yellow** are those where the district indicates the course as meeting an “a-g” subject area, but the course **cannot be verified** against the CMP.

|  |  Not a verified "a-g" course |  Course listed as "a-g" by school, but not found in UC CMP database |
|--|---|--|
| <b>Additional Coursework</b><br>Unmatched "a-g" Courses Other<br>High School Graduation<br>Requirements Community College<br>Preparatory Courses CTE<br>Pathways Courses | Health Ed<br>S1 2020-21<br>Completed  | A+   |
|  | History of Rock<br>S1 2020-21<br>Completed  | A  |
|  | *PE 1<br>S2 2020-21<br>Completed  | A+   |
|  |   |  |



# Cal State Apply Course Import

Watch “Using the Cal State Apply Integration” video at:  
**<https://vimeo.com/902085427>**



# CaliforniaColleges.edu Course Import to Cal State Apply

| What It Does  | What It Does NOT Do  |
|---|--|
| <b>Saves time:</b> Can <u>significantly reduce</u> the time required to complete Cal State Apply applications.  | It does <b>NOT</b> replace the need to review all course records for accuracy prior to Cal State Apply application submission. |
| <b>Reduces errors:</b> Verifies high school course records against the CMP and pre-populates that information into a Cal State Apply application.                   |  |
| <b>Supports intentional review:</b> Allows counselors and college access staff to identify and focus time and energy on students records that are the most complex. | It does <b>NOT</b> replace the need for counselors and/or college access staff to support students.                            |

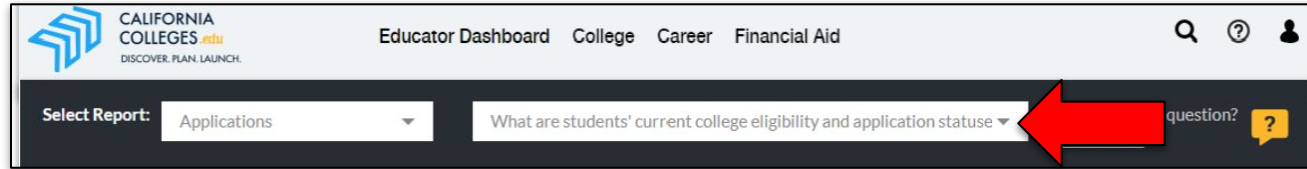




# School-Level and District-Level Data

**View application statuses to all CCC, CSU and/or UC campuses – for all applications connected to CaliforniaColleges.edu – updated nightly.**

- ▶ The **“What are students’ current college eligibility and application statuses”** report offers a single, downloadable file to help you identify students for intervention and/or opportunities:



- ▶ Filter this report in multiple ways to answer questions, such as:
  - Which students are a-g eligible, but have not applied?
  - Which students have applications in progress, but not yet submitted?
  - Which students have not applied to any segment?
  - Which students have applied to a specific campus?



CALIFORNIA  
COLLEGES.edu  
DISCOVER. PLAN. LAUNCH.

# Implementing Equity-Focused State Policies

Districts can use the data and reporting tools on CaliforniaColleges.edu to make it easier to implement and comply with equity-focused state policies.



**AB 132**

Cradle-to-Career  
Data System



**AB 130**

A-G Completion  
Improvement Grant  
Program



**AB 469**

Universal FAFSA/CADAA  
for Graduating Seniors



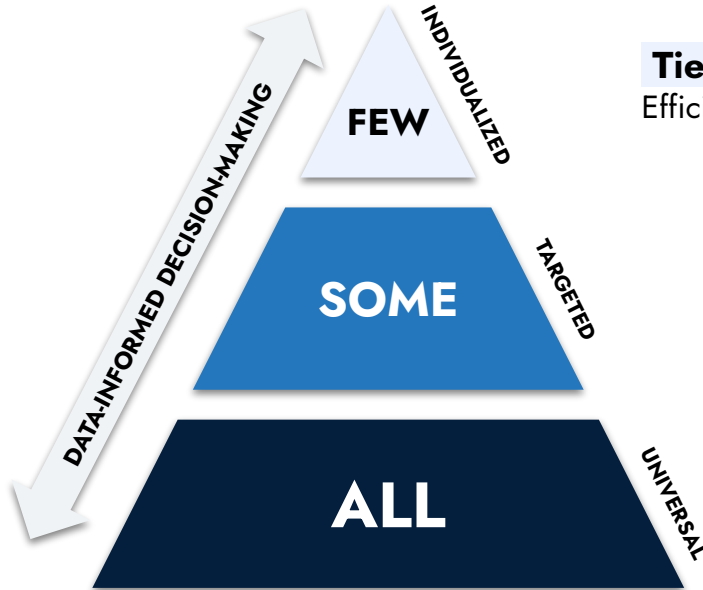
**AB 2015**

Financial Aid Information  
Prior to Grade 12



# Within a MTSS Framework

CaliforniaColleges.edu can be leveraged to support Tier 1 learning for all students, while increasing efficiency and ability for educators to strategically intervene with those who need support at Tier 2 and 3.



## Tier 3 – Intensive Interventions

Efficiencies at Tier 1 and 2, free time for educators to provide 1:1 support.

## Tier 2 – Targeted Interventions

Educator tools and reports on CaliforniaColleges.edu allow for targeted interventions with individuals or groups of students.

## Tier 1 – Universal Interventions

CaliforniaColleges.edu is the state's official college and career planning platform, designed for all 6th-12th grade students.



# Alignment to District Goals and Priorities

**Through strategic implementation, CaliforniaColleges.edu can support with:**

- ▶ Expanding career/college exploration and knowledge for all students.
- ▶ Increasing “a-g” completion for high school students.
- ▶ Reducing the burden on students when applying to college through CMP course alignment.
- ▶ Increasing college application support and completion for all students.
- ▶ Increasing CSU and UC application support and completion for CSU/UC-eligible students.
- ▶ Expanding awareness of financial aid and increasing financial aid completion.

**How do these align to your site/district goals, priorities or initiatives?**

**LCAP**



**SPSA**



CALIFORNIA  
COLLEGES.edu  
DISCOVER. PLAN. LAUNCH.

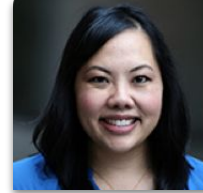
# Implementation Support

**CCGI has team members dedicated to serving the Northern California region:**

Our **Engagement and Implementation** team leads outreach, training and implementation support for CaliforniaColleges.edu.



**Darice Ingram**  
Director



**Ying Lo-Khang**  
Senior Manager



**Shannon Coskran**  
Senior Manager



**Olivia Lopes**  
Training Manager

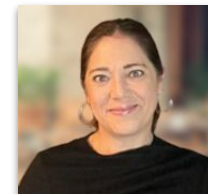
Our **Data Services** and **Technical Assistance** teams help districts bring their data files to CaliforniaColleges.edu and support CMP alignment.



**Joshua Davis**  
District Data  
Support Analyst



**Elizabeth Love**  
District Data  
Support Analyst



**Abigail Bailey**  
Technical Assistance  
Manager



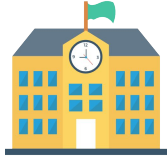
**Dulce Grant**  
Technical  
Assistance Manager



CALIFORNIA  
COLLEGES.edu  
DISCOVER. PLAN. LAUNCH.

# Not Yet a Partner?

**We partner with public school districts that serve high school students.**



To learn about bringing CaliforniaColleges.edu to your district, visit:  
**[californiacolleges.edu/learnmore/partnership/](https://californiacolleges.edu/learnmore/partnership/)**



Share your interest and enthusiasm about CaliforniaColleges.edu with your district leader and/or partnership decision-maker.



When your district is ready to explore partnership, email us at:  
**[CommunityEngagement@CaliforniaColleges.edu](mailto:CommunityEngagement@CaliforniaColleges.edu)**

# Questions?



CALIFORNIA  
COLLEGES *.edu*



The Official College & Career Planning  
Platform of the State of California



# Appendices

- ▶ **[Introducing CaliforniaColleges.edu](#)** — View this joint announcement from the California Department of Education, California Cradle-to-Career Data System, University of California, California State University, California Community Colleges, and California Student Aid Commission.
- ▶ **[California Education Code 60900.5](#)** — Review the Ed Code that names CCGI as an authorized provider of an institutional service to all California public school districts and that outlines the role of CaliforniaCollege.edu in the state's work to make college-going a more streamlined experience for students.
- ▶ **[AB 132 and the Cradle-to-Career Data System](#)** — Learn about AB 132 and the role of CaliforniaColleges.edu in the California Cradle-to-Career Data System.
- ▶ **[The California College Guidance Initiative](#)** — Learn more about the work and mission of CCGI, our partnerships, and team members.
- ▶ **[CCGI Newsroom](#)** — See where our work has been featured by local, state, and national media outlets, as well as numerous studies and reports that feature our approaches and impact.





CALIFORNIA  
COLLEGES.edu  
DISCOVER. PLAN. LAUNCH.

# Additional Resources



**Get On-Demand Training on How to Use CaliforniaColleges.edu**  
[californiacolleges.edu/#/virtual-trainings-partner-districts](https://californiacolleges.edu/#/virtual-trainings-partner-districts)



**Visit the Resource Hub**  
[californiacolleges.edu/resourcehub/resources/](https://californiacolleges.edu/resourcehub/resources/)



**Find Answers to Common Questions on Our Help Page**  
[californiacolleges.edu/resourcehub/help/](https://californiacolleges.edu/resourcehub/help/)



**Check Out Our Videos on Vimeo**  
[vimeo.com/californiacolleges/](https://vimeo.com/californiacolleges/)



**Contact Us Directly for Assistance**  
[californiacolleges.edu/#/contact-us](https://californiacolleges.edu/#/contact-us)



**Thank You!**