

CaliforniaColleges.edu

Fresno County Office of Education School Counselors Network

January 24, 2023



CALIFORNIA
COLLEGES.edu



The Official College & Career Planning
Platform of the State of California



Heather Allen
Chief Programs Officer



Darice Ingram
Deputy Director, Engagement

California College Guidance Initiative

Who We Are

- State-funded nonprofit.
- Manager of **CaliforniaColleges.edu**.
- Critical part of infrastructure for the **Cradle-to-Career** system.

Why We're Here

- To smooth the path to college and career for all California students.
- To ensure equitable outcomes for all students, especially the underserved.

What We Do

- College and career planning.
- Capacity building.
- Provide data-informed tools to students, parents, and educators.





CALIFORNIA
COLLEGES.edu
DISCOVER. PLAN. LAUNCH.

What is CaliforniaColleges.edu?

CaliforniaColleges.edu is the state of California's official college and career planning platform.

Benefits of a CaliforniaColleges.edu account include access to free tools to help students with:



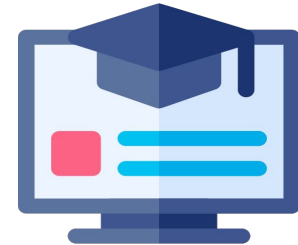
**Career
Planning**



**College
Planning**



**Financial
Aid**



**Progress
Tracking**



CALIFORNIA
COLLEGES.edu
DISCOVER. PLAN. LAUNCH.

What is CaliforniaColleges.edu?

California's official college and career planning platform.



Built for Californians Designed to meet the specific needs of California students, parents, educators, and school districts.



Connects California Systems The only platform integrated with all three state public higher education systems (CCC, CSU, UC) and the California Student Aid Commission (CSAC).



Written into California Ed. Code CaliforniaColleges.edu is authorized service provider for all California school districts.



Funded by the State of California CaliforniaColleges.edu is funded by the State of California through Proposition 98.



Critical part of infrastructure for the California's Cradle-to-Career system AB 132 outlines specific steps in order to implement the Cradle-to-Career System and realize its objectives, including making CaliforniaColleges.edu tools and services free to all California school districts serving 6-12th grade students and designating CaliforniaColleges.edu as the preferred starting point for all applications to California public colleges, FAFSA and CADAA.



CALIFORNIA
COLLEGES.edu
DISCOVER. PLAN. LAUNCH.

Universal Access to CaliforniaColleges.edu

One goal of the Cradle-to-Career legislation is to make CaliforniaColleges.edu available to every school district, student, and educator in California by 2026.

144

Official school district partners

1M

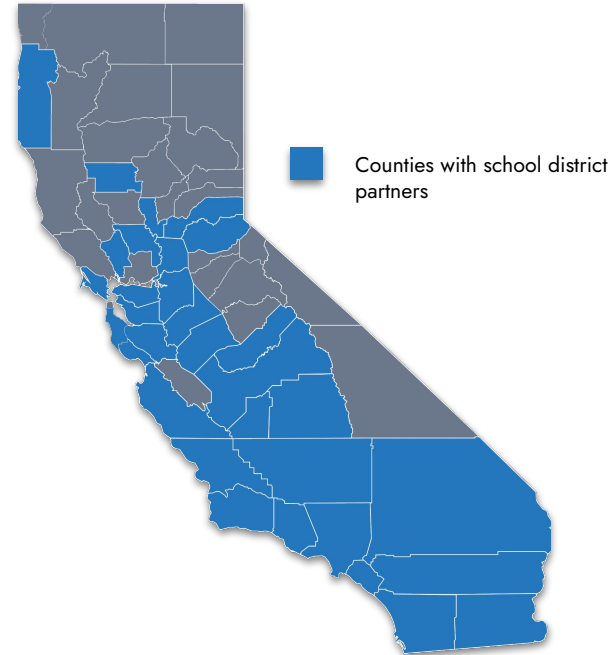
6th-12th grade students served

43

School districts in the pipeline for partnership by Fall 2023

500k

Additional students in the pipeline who will be served by Fall 2023





CALIFORNIA
COLLEGES.edu
DISCOVER. PLAN. LAUNCH.

Early access in Fresno County

College Next California started in the Central Valley. It provided K-12 districts access to the data-driven functionality of CaliforniaColleges.edu

COLLEGENEXT
CALIFORNIA

A Regional Approach for Student Success

We know that most students study and work in the region they call home and that their economic success is increasingly dependent on earning a college certificate or degree. College Next California brings K-12 districts together with community colleges and California State University (CSU) campuses throughout a region to smooth the pathway from high school to college and career. By creating a pipeline through which data follows students as they move from K-12 to postsecondary, and by helping students develop and launch a plan for life after high school, College Next California empowers students with options for their future.



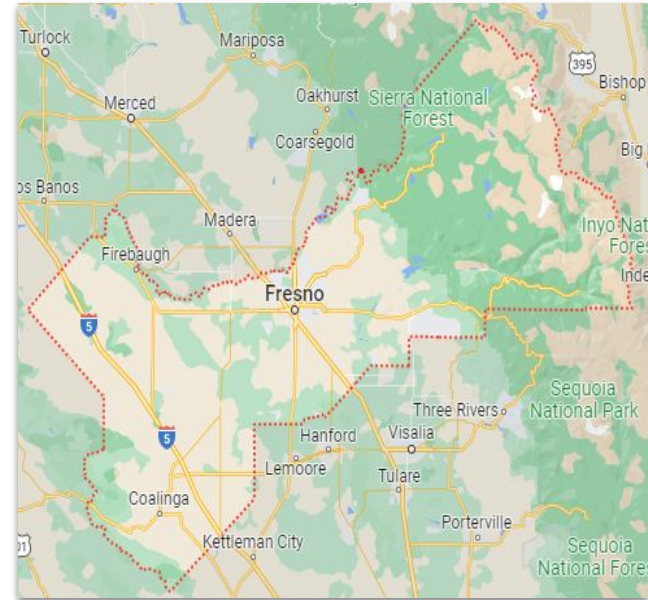


Where We Are in Fresno County

Almost 100% of Fresno County districts have partnership access to CaliforniaColleges.edu through the CollegeNext Initiative.

Partner Districts

- ▶ Central Unified School District
- ▶ Clovis Unified School District*
- ▶ Coalinga-Huron Unified
- ▶ Firebaugh Las Deltas Unified School District
- ▶ Fresno Unified School District
- ▶ Golden Plains Unified School District
- ▶ Kerman Unified School District
- ▶ Kings Canyon Joint Unified School District
- ▶ Kingsburg Joint Union High*
- ▶ Mendota Unified School District
- ▶ Parlier Unified School District
- ▶ Riverdale Joint Unified School District
- ▶ Sanger Unified School District
- ▶ Selma Unified School District
- ▶ Sierra Unified
- ▶ Washington Unified School District





CALIFORNIA
COLLEGES.edu
DISCOVER. PLAN. LAUNCH.

What Tools are Available on CaliforniaColleges.edu?

CaliforniaColleges.edu provides tools to empower students and educators alike.

■ We provide students with:



- Career exploration tools
- College and major search tools
- Financial aid lessons
- CSU/UC eligibility tools
- College and financial aid application integration

■ We provide educators with:



- College and career planning tools *in one place*
- Ability to track student progress and better target interventions
- Data and reporting tools to help districts comply with regulatory requirements

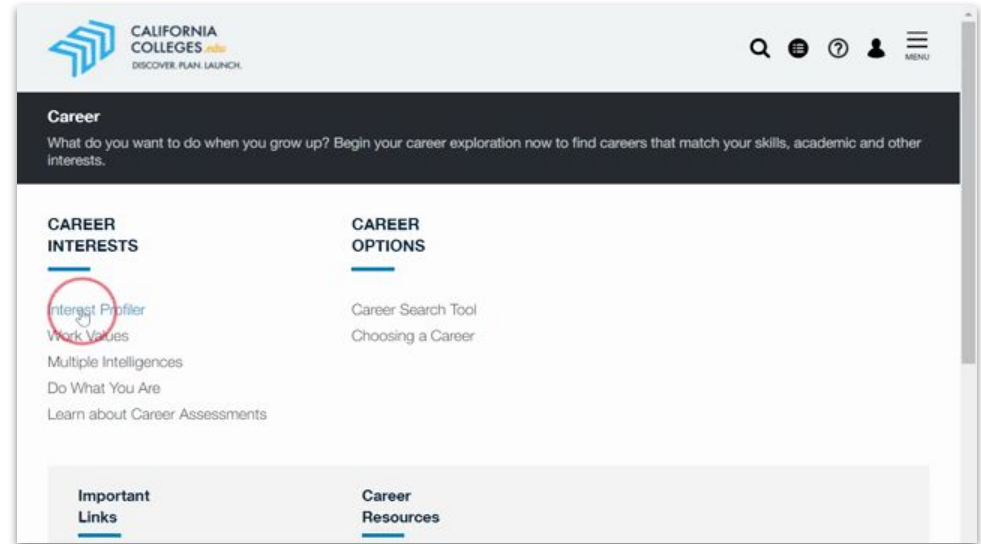


Career Assessments

Our career assessments can help students identify their values, interests, learning styles, and personalities and learn how they can connect to fulfilling careers.

Our assessments include:

- Interest Profiler
- Learning & Productivity
- Intelligences
- Personality





Career Search Tool

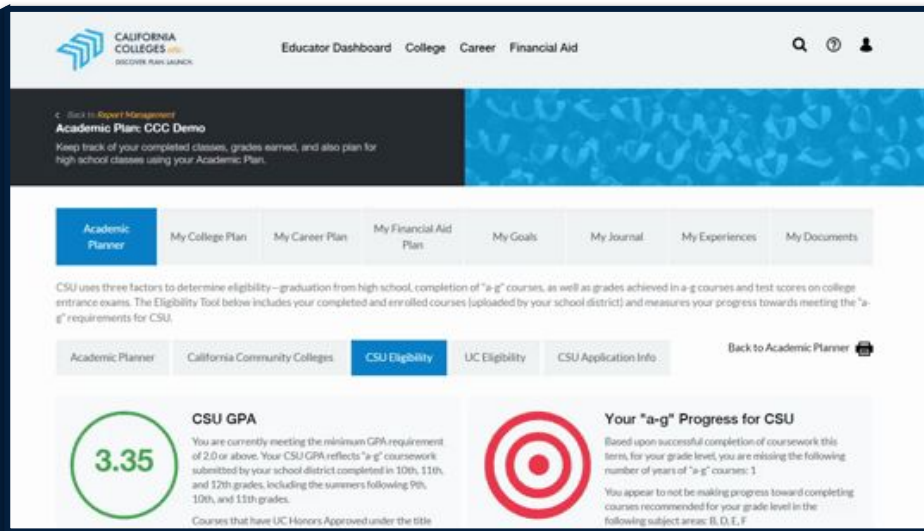
Our career search tool helps students find the right career path by figuring out what they want to be and what it will take for them to get there.

CaliforniaColleges.edu allows students to:

- Explore careers that match their interests.
- Learn what careers involve.
- See what kind of pay and growth potential jobs offer.
- Understand what education and skills they will need to pursue their career of choice.

CSU & UC Eligibility Tools (Students)

Students in partner districts can use CSU and UC eligibility tools to quickly track their progress toward meeting “a-g” requirements.

The screenshot displays the 'Academic Planner' interface. At the top, there's a navigation bar with links to 'Educator Dashboard', 'College', 'Career', and 'Financial Aid'. Below this, a section titled 'Academic Plan: CCC Demo' provides instructions on tracking progress. A horizontal menu includes options like 'Academic Planner', 'My College Plan', 'My Career Plan', 'My Financial Aid Plan', 'My Goals', 'My Journal', 'My Experiences', and 'My Documents'. The 'Academic Planner' section is active, showing a summary of CSU eligibility factors. A 'CSU Eligibility' tab is selected, displaying a '3.35' CSU GPA and a progress indicator for 'a-g' requirements. A target icon indicates the user is not making progress towards completing recommended courses.

CSU GPA
3.35
You are currently meeting the minimum GPA requirement of 2.0 or above. Your CSU GPA reflects "a-g" coursework submitted by your school district completed in 10th, 11th, and 12th grades, including the summers following 9th, 10th, and 11th grades.
Courses that have UC Honors Approved under the title

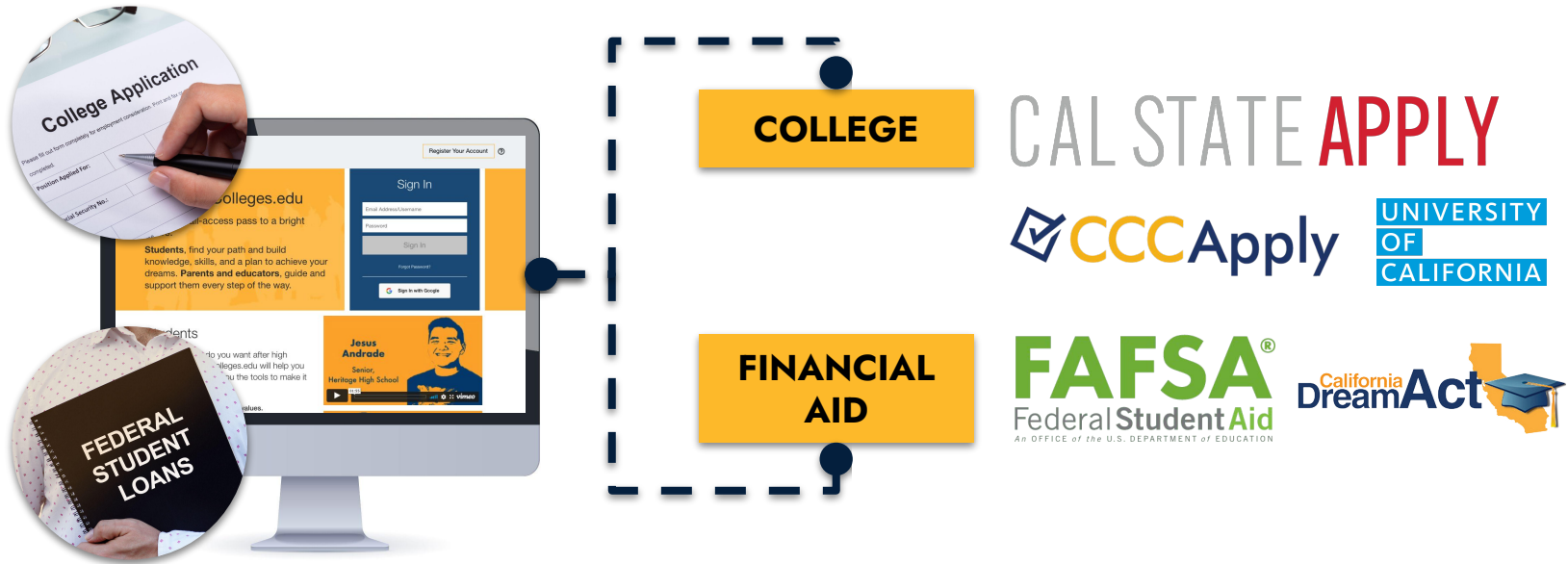
Your "a-g" Progress for CSU
Based upon successful completion of coursework this term, for your grade level, you are missing the following number of years of "a-g" courses: 1
You appear to not be making progress toward completing courses recommended for your grade level in the following subject areas: B, D, E, F



CALIFORNIA
COLLEGES.edu
DISCOVER. PLAN. LAUNCH.

College & Financial Aid Application Integration

Students can launch college and financial aid applications directly from CaliforniaColleges.edu and track their progress.





CALIFORNIA
COLLEGES.edu
DISCOVER. PLAN. LAUNCH.

Financial Aid Tools

We provide students with:

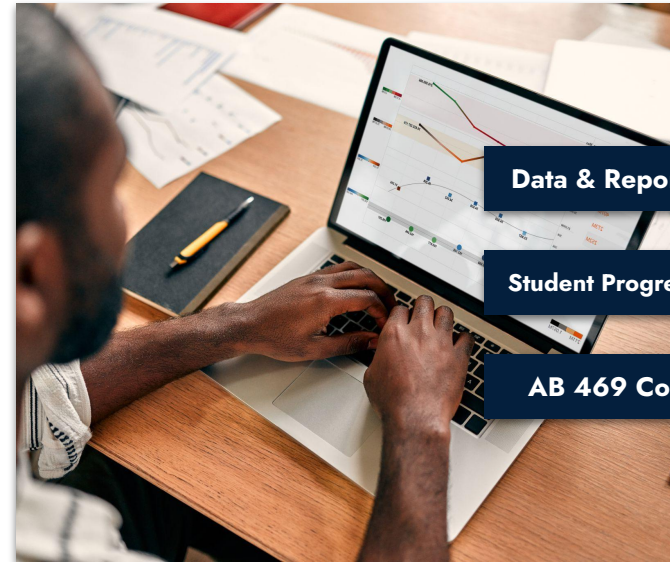


Financial Aid Lessons

Application Launch

Offer Comparison Tool

We provide educators with:



Data & Reporting Tools

Student Progress Tracking

AB 469 Compliance



Tools and Support for Educators

Educators in partner districts can run reports to monitor student progress on their activities on CaliforniaColleges.edu.

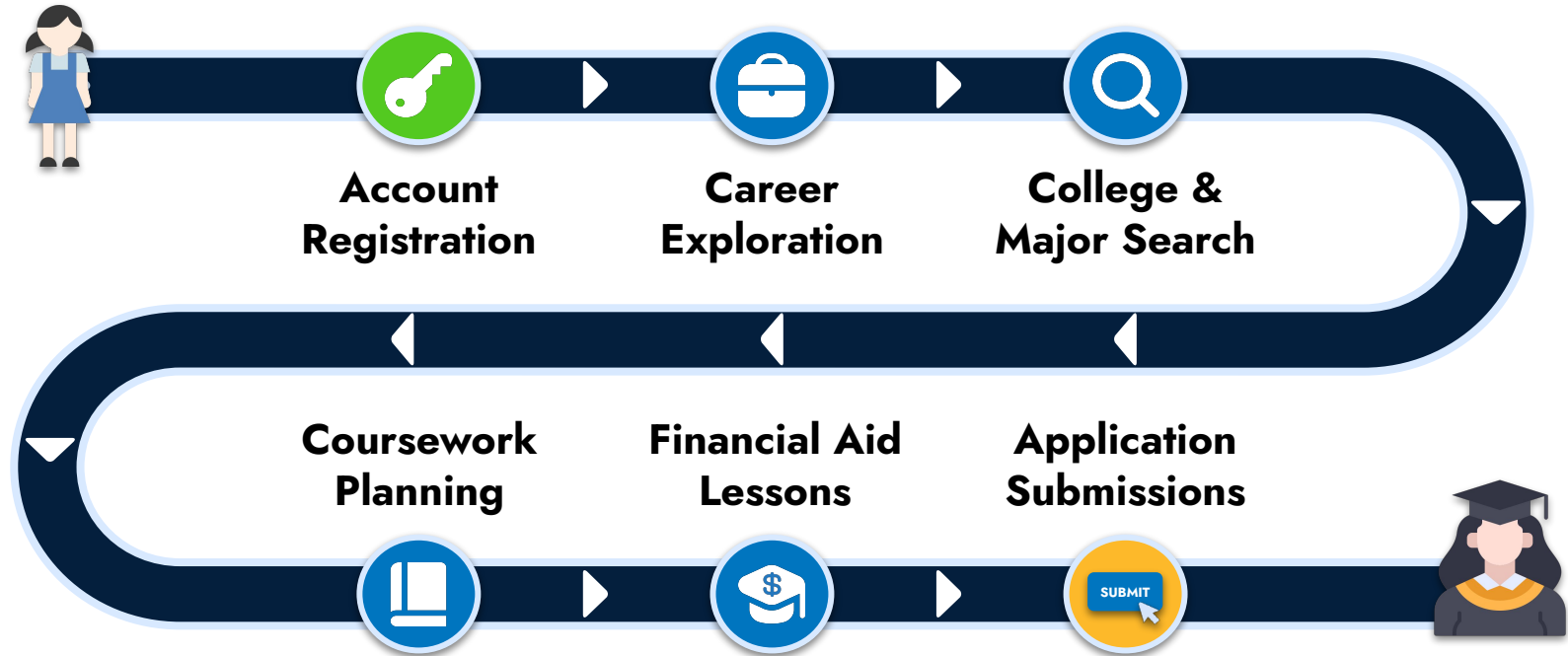
The screenshot displays the 'Manage Reports' interface. At the top, the navigation bar includes the California Colleges.edu logo, the title 'Educator Dashboard', and links for 'College', 'Career', and 'Financial Aid'. Below this, the 'Manage Reports' section has a sub-header 'Track your student's college and career readiness by running reports.' and a descriptive paragraph. The main area contains a 'Select Report' dropdown set to 'Academic', a 'Select Report Type' dropdown, and a 'Have a report question? Contact Us' link. Below these are 'Select Filters' for Grade, Course, Section, Gender, Ethnicity, Special Population, and Race, along with 'Start Date' and 'End Date' fields. A 'Run Report' button and a 'Reset Filters' button are positioned to the right of the filters. At the bottom, a status bar shows 'Report: None', 'Filters Selected: Grade: All, Course: All, Section: All, Gender: All, Ethnicity: All, Special Population: All, Race: All', and 'Actions: Print, Download XLSX, Download CSV'.





Smoothing the Path for Students

When students are signed in to **CaliforniaColleges.edu**, educators can track their activities and application progress using built-in reporting tools.



Implementing Equity-Focused State Policies Using CaliforniaColleges.edu

Districts can use the data and reporting tools on CaliforniaColleges.edu to both make it easier to implement and meet compliance with equity-focused state policies.



2021 Budget Act
Regional K-16 Education
Collaboratives Grant
Program



AB 469
Universal FAFSA/
CADAA for
Graduating Seniors



AB 132
Cradle-to-Career
System



AB 130
A-G Completion
Improvement
Grant Program

CaliforniaColleges.edu Demo



CALIFORNIA
COLLEGES *.edu*



The Official College & Career Planning
Platform of the State of California

Questions?



CALIFORNIA
COLLEGES.*edu*



The Official College & Career Planning
Platform of the State of California

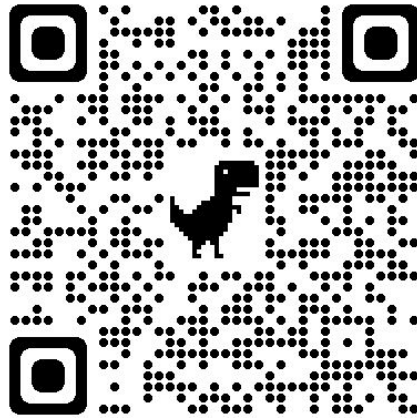


CALIFORNIA
COLLEGES.edu
DISCOVER. PLAN. LAUNCH.

Fresno County Superintendent of Schools School Counselors' Network Survey 1.24.22

Please take a few moments to tell us what would be most useful to you in learning more and implementing CaliforniaColleges.edu

Scan Me!



<https://forms.gle/xGABnZfR3tVBnAg98>



Appendices

- ▶ [About AB 132 and the Cradle-to-Career Data System](#) - learn about the role of CaliforniaColleges.edu in the State's data system
- ▶ [CaliforniaColleges.edu Resource Hub](#) - a single site that compiles resources for students, parents and educators, including step-by-step informational guides to support use of the tools, video demonstrations, and testimonials from those who've used platform
- ▶ [Virtual Training Series for School Counselors](#) - Pre-recorded, 30 minute videos demonstrating use of key areas of CaliforniaColleges.edu that counselors can access at any time. If you'd prefer to attend a "live" virtual session with one of our trainers, the schedule and registration links can be found [here](#)
- ▶ [Subscribe to our mailing list](#) - get important announcements about CaliforniaColleges.edu enhancements and other updates
- ▶ [CCGI Newsroom](#) - see where our work has been featured by local, state and national media outlets, as well as numerous studies & reports that feature our approaches and impact

Contact Us

CommunityEngagement@CaliforniaColleges.edu



CALIFORNIA
COLLEGES *.edu*



The Official College & Career Planning
Platform of the State of California